

TIOMOS 110/30A

Balama dulap colt cu unghiul +30° (Aplicata)



- Pentru dulapuri cu unghiuri de 30°
- Unghi deschidere de 110°
- Reglarea adâncimii usoara prin angrenajul cu melc
- Ajustare pe 3 directii cu placuta de montaj potrivita
- Rost minim

Disponibil in 3 versiuni:

- Cu amortizor integrat (ajustabil pe 3 nivele de amortizare)
- Fara amortizor integrat
- Fara mecanism de autoinchidere (fara arc)

INFORMATII COMANDA PENTRU SABLONUL DE GAURIRE 45/9.5

Suprapunere usa		Amortizor		Fara arc	Articol nr.		
		Cu	Fara		Click-on Prin insurubare		Impreso Fara tools
Aplicata ¹		■	-	-	F028138529		F017139335
		-	■	-	F045138467		F034139306
		-	■	■	F046138589		-

¹ Material cupa: otel nichelat / Material brat: Zamak, otel nichelat

CAPACE MASCARE

	Denumire	Imprimat/Embosat	Articol nr.
	Capac brat balama , otel nichelat, neimprimat	La cerere	F072135500
	Capac brat balama ,dreapta, otel nichelat, imprimat GRASS	Logo GRASS	F072135550
	Capac brat balama ,stanga, otel nichelat, imprimat GRASS	Logo GRASS	F072135551
	Capac cupa balama , otel nichelat, lung, neimprimat	-	F072135503

ACCESORII

	Denumire	Articol nr.
	Tipmatic Pin pentru rame din aluminiu si lemn	F069135396
	Holzsurub cap inecat Ø 3.5 x 15 mm	F146073976

	Denumire	Articol nr.
	Dispozitiv de siguranta	F072135807

Tiomos placute de montaj	102
Accesorii	112

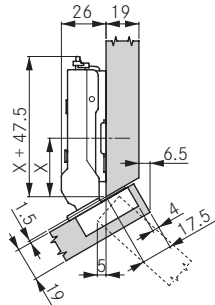
Tipmatic	308
Informatii tehnice	116

Scule necesare pentru montaj	364
------------------------------	-----

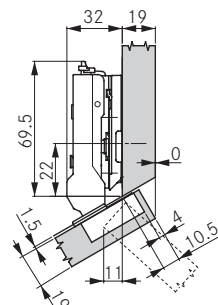
COTE MONTAJ

Toate dimensiunile sunt in milimetri

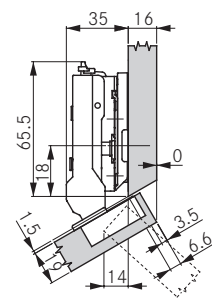
Aplicata



Inaltime placuta de montaj 0

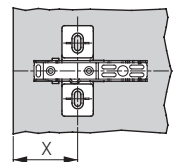


Inaltime placuta de montaj 6



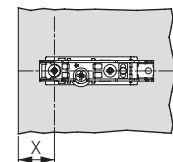
Inaltime placuta de montaj 9

Suprapunere usa	Distanța cupa					
	3	4	5	6	7	
20.5					0	
19.5				0		
18.5			0		2	
17.5		0		2	3	
16.5	0				3.5	
16.0			2	3		
15.5				3.5		
15.0		2	3			
14.5			3.5			
14.0	2	3				
13.5		3.5				
13.0	3					
12.5	3.5			6		
11.5			6			
10.5		6				
	Inaltime placuta de montaj					



Placute de montaj in cruce cu distanta de fixare de 37

Inaltime placuta de montaj	Inaltime placuta de montaj				
	0	2	3	3.5	6
X	34.0	33.0	32.0	32.0	30.5
	Pozitie placuta de montaj in cruce (X)				



Placute de montaj liniare

Inaltime placuta de montaj	Inaltime placuta de montaj			
	0	2	3	3.5
X	17.0	16.0	15.0	15.0
	Pozitie placuta de montaj liniara (X)			

LUFT MINIM

Grosime usa	Distanța cupa					
	3	4	5	6	7	
24.0	1.0	1.0	1.0	1.2	2.1	
22.0	1.0	1.0	1.0	1.0	1.5	
21.0	1.0	1.0	1.0	1.0	1.2	
20.0	1.0	1.0	1.0	1.0	1.0	
19.0	1.0	1.0	1.0	1.0	1.0	
18.0	1.0	1.0	1.0	1.0	1.0	
17.0	1.0	1.0	1.0	1.0	1.0	
16.0	1.0	1.0	1.0	1.0	1.0	
	Luft minim					

ROST MINIM

Grosime usa	Distanța cupa					
	3	4	5	6	7	
24.0	2.4	2.1	2.1	2.1	2.0	
22.0	1.6	1.6	1.6	1.5	1.5	
21.0	1.4	1.3	1.3	1.3	1.3	
20.0	1.1	1.1	1.1	1.1	1.1	
19.0	0.9	0.9	0.9	0.9	0.9	
18.0	0.7	0.7	0.7	0.7	0.7	
17.0	0.6	0.6	0.6	0.6	0.6	
16.0	0.6	0.6	0.6	0.6	0.6	
	Rost minim (F)					

NOTA

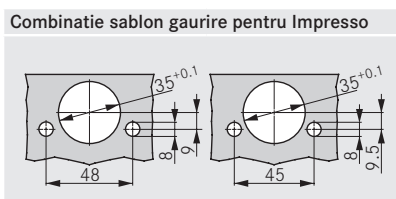
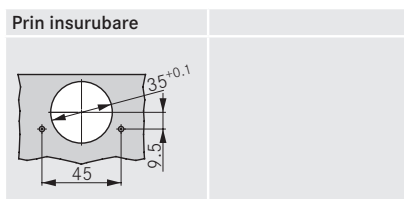
Luft-ul minim este spatiul necesar intre dulap si usa , astfel încât ușa să se poată deschide fără obstacole.

Rost minim pentru uși cu margini țeșite (R = 1 mm) (setari din fabrica).

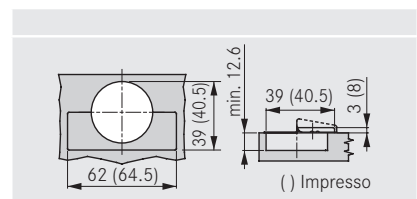
Dimensiunea balamalelor si calculatia rostului cu setarile din fabrica

Pentru grosimi ale usii de 24 mm sau mai mare se recomanda proba de montaj

SABLON PENTRU GAURIRE 45/9.5



DIMENSIUNI CUPA



TIOMOS 110/30A

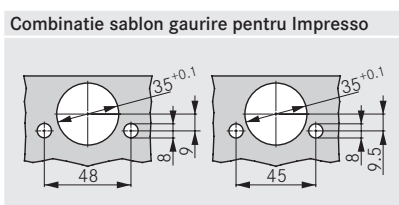
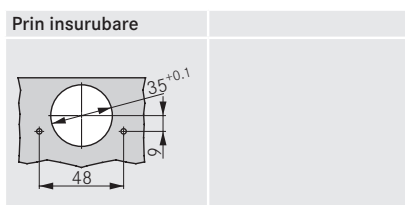
Balama dulap colt cu unghiul +30° (Aplicata)

INFORMATII COMANDA PENTRU SABLONUL DE GAURIRE 48/9

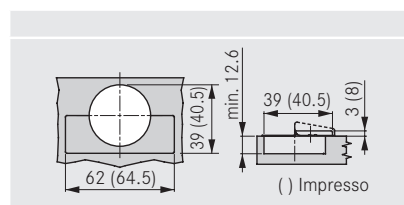
Suprapunere usa		Amortizor		Fara arc	Articol nr.		
		Cu	Fara		Click-on Prin insurubare		Impreso fara scule
Aplicata ¹		■	-	-	F028138103		F017139335
		-	■	-	F045138010		F034139306
		-	■	■	F046138194		-

¹ Material cupa: otel nichelat / Material brat: Zamak, otel nichelat

SABLON PENTRU GAURIRE 48/9



DIMENSIUNI CUPA

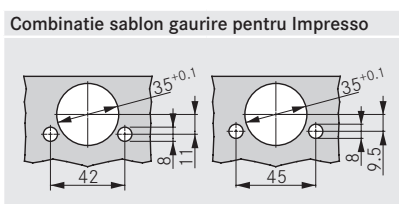
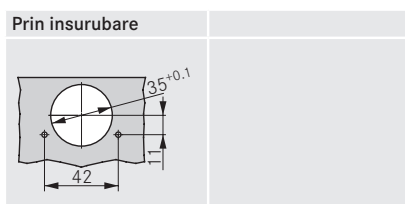


INFORMATII COMANDA PENTRU SABLONUL DE GAURIRE 42/11

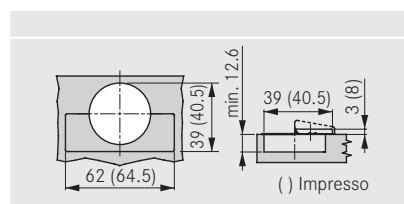
Suprapunere usa		Amortizor		Fara arc	Articol nr.		
		Cu	Fara		Click-on Prin insurubare		Impreso fara scule
Aplicata ¹		■	-	-	F028138347		F017139420
		-	■	-	F045138285		F034139391
		-	■	■	F046138407		-

¹ Material cupa: otel nichelat / Material brat: Zamak, otel nichelat

SABLON PENTRU GAURIRE 42/11



DIMENSIUNI CUPA



Timos placute de montaj	102
Accesorii	112

Tipmatic	308
Informatii tehnice	116

Scule necesare pentru montaj	364
------------------------------	-----

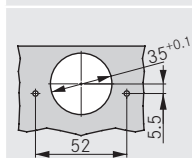
INFORMATII COMANDA PENTRU SABLONUL DE GAURIRE 52/5.5

Suprapunere usa		Amortizor		Fara arc	Articol nr.		
		Cu	Fara		Click-on Prin insurubare		Impreso fara scule
Aplicata ¹		■	-	-	F028138711		F017139505
		-	■	-	F045138649		F034139476
		-	■	■	F046138771		-

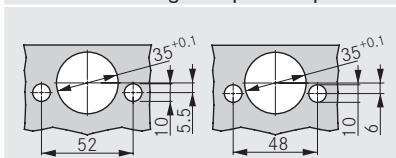
¹ Material cupa: otel nichelat / Material brat: Zamak, otel nichelat

SABLON PENTRU GAURIRE 52/5.5

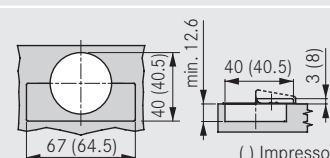
Prin insurubare



Combinatie sablon gaurire pentru Impreso



DIMENSIUNI CUPA



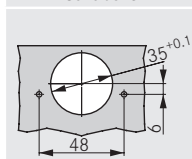
INFORMATII COMANDA PENTRU SABLONUL DE GAURIRE 48/6

Suprapunere usa		Amortizor		Fara arc	Articol nr.		
		Cu	Fara		Click-on Prin insurubare		Impreso fara scule
Aplicata ¹		■	-	-	F028138893		F017139505
		-	■	-	F045138831		F034139476
		-	■	■	F046138953		-

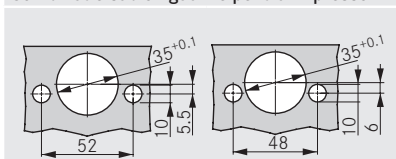
¹ Material cupa: otel nichelat / Material brat: Zamak, otel nichelat

SABLON PENTRU GAURIRE 48/6

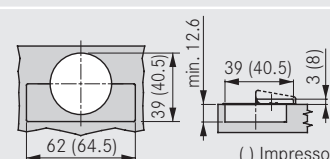
Prin insurubare



Combinatie sablon gaurire pentru Impreso



DIMENSIUNI CUPA



Tiomos placute de montaj	102
Accesorii	112

Tipmatic	308
Informatii tehnice	116

Scule necesare pentru montaj	364

Tiomos
Nexis
Balamale speciale
Balamale cu o articulatie
Accesorii dulapuri