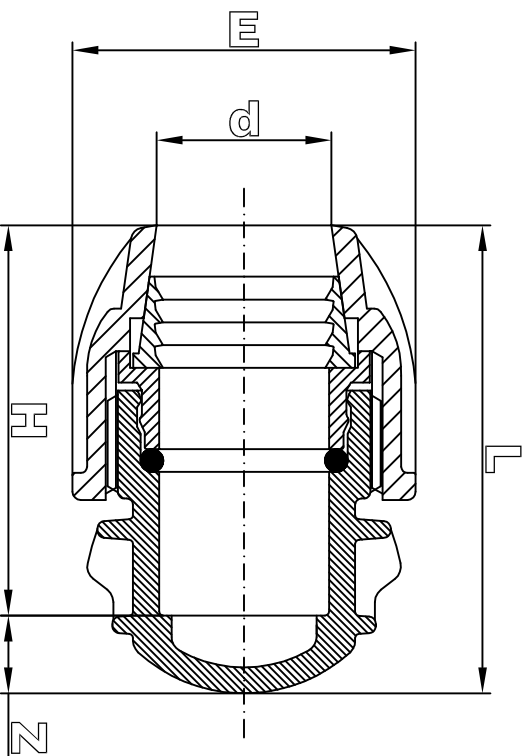


DOP RAPID PE



The FILBO connecting joint is designed and manufactured in accordance to the international standard norms:

- ISO 3458
- ISO 3459
- ISO 3501
- ISO 3503
- ISO 14236
- DIN 8076-3
- KIWA BRLK 534-01
- UNI 9561
- UNI 9562


The connecting parts of the body with the PE pipes are designed in accordance to the international standard norms:

- ISO DIS 3607
- DIN 8072
- DIN 8074
- UNI 7611
- UNI 7990

Male and female threaded adaptors are designed in accordance to the international standard norms:

- ISO 7
- UNISO 7-1
- BS 21

d	Z _{min.}	H	L		E		g	
			Tolerance	Tolerance	Tolerance	Tolerance		
20	8	58	+3 mm	66	+3 mm	47	+0.3 mm	35
25	9	67	+3 mm	76	+3 mm	54	+0.3 mm	50
32	12	77	+3 mm	89	+3 mm	66	+0.3 mm	90
40	15	96	+5 mm	111	+5 mm	83	+0.5 mm	180
50	20	110	+5 mm	130	+5 mm	98	+0.5 mm	280
63	25	124	+5 mm	149	+5 mm	116	+0.5 mm	450
75								
90								
110								

		DENOMINAZIONE Plug Data Sheet: FISA DOP RAPID PE	
Designer	6, Tsar Ivan Shishman Str. Varna – Bulgaria	Raw Material	Drawing N°
SCALA	Date	Injection Machine	DSH 0003
//	05.06.2007		