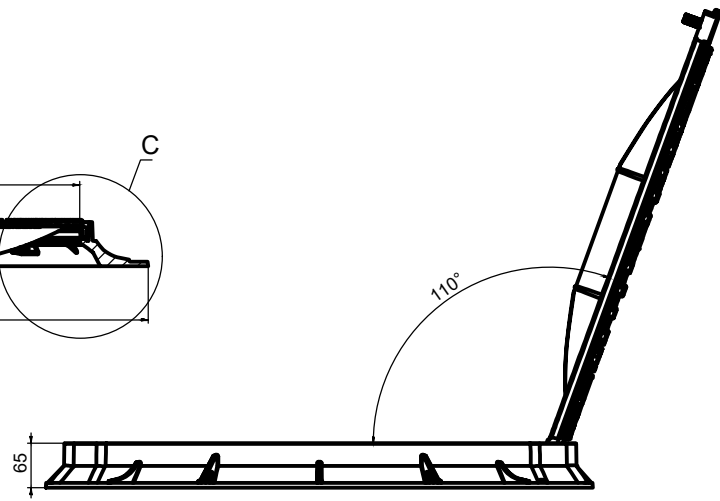
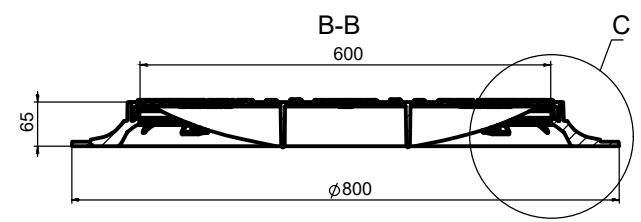
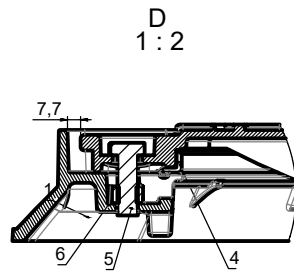
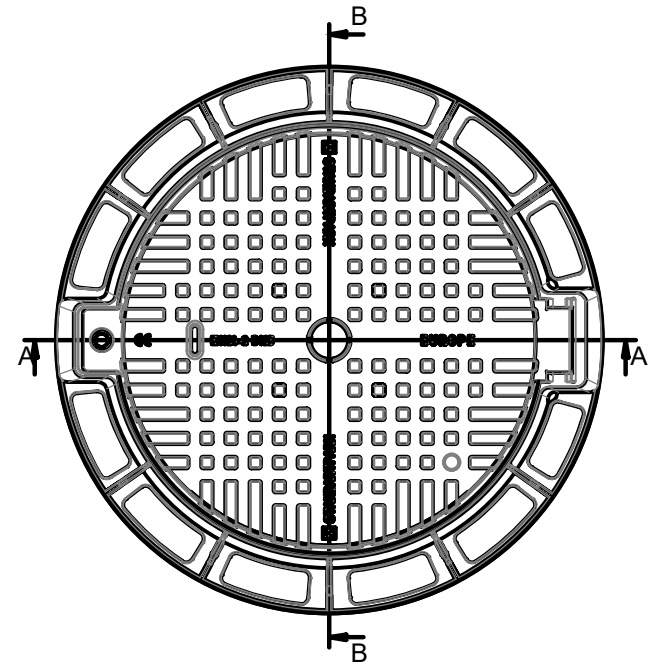
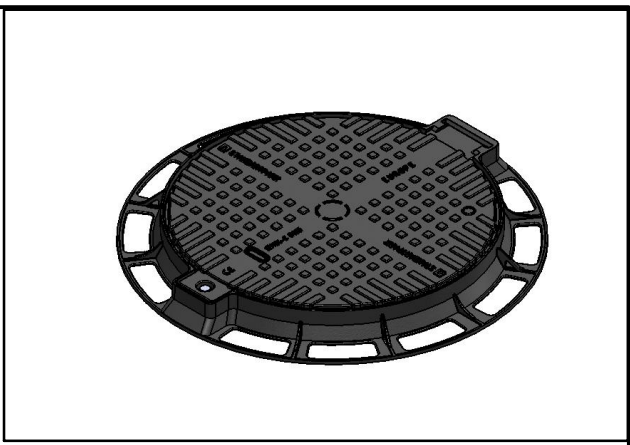
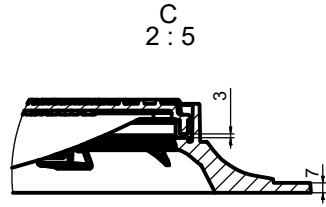
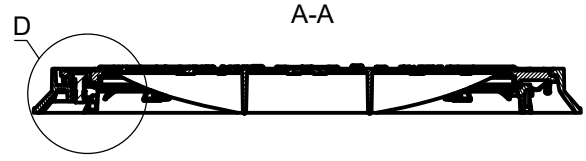


35258-35

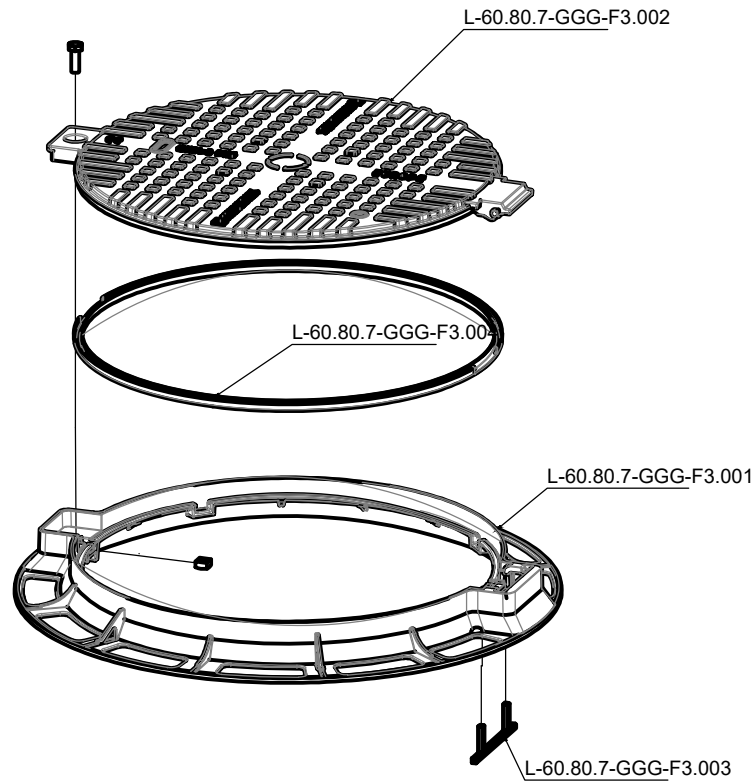


Primary Usage  
 Reference No.  
 Sign. and date  
 Epl. inv. No. Copy inv. No.  
 Sign. and date  
 Orig. inv. No.

Position	Designation	Name	Pis.
1	L-60.80.16-GGG-F3.001	Manhole body	1
2	L-60.80.16-GGG-F3.002	Manhole cover	1
3	L-60.80.16-GGG-F3.003	Vandal-proof pin	1
4	L-60.80.16-GGG-F3.004	Gasket	1
5		Bolt M12x40 GOST 7796-70 stainless steel	1
6		Square nut M12 DIN 557 stainless steel	1

		35258-35		Art. 35258-35	
Rev	Sheet	Doc. No.			
Dvlpd by	Dyka	13.03.2018			
Chkd by	Kachanovsky				
Tech. Ctrl	Tsyurak				
Reg. Doc	D.Negru				
Aprvd by	Voloshchuk				
Contact	tehnico@standartpark.ro				
<b>Load Class (B125)</b> <b>Ductile cast iron / Fonta</b>			Let.	Weight, kg	Scale
				30	1:5
			Sheet 1	Sheets 11	
			<b>STANDARTPARK</b>		

Position	Designation	Name	Pis.
1	L-60.80.16-GGG-F3.001	Manhole body	1
2	L-60.80.16-GGG-F3.002	Manhole cover	1
3	L-60.80.16-GGG-F3.003	Vandal-proof pin	1
4	L-60.80.16-GGG-F3.004	Gasket	1
5		Bolt M12x40 GOST 7796-70 in stainless steel	1
6		Square nut M12 DIN 557 in stainless steel	1




Primary Usage

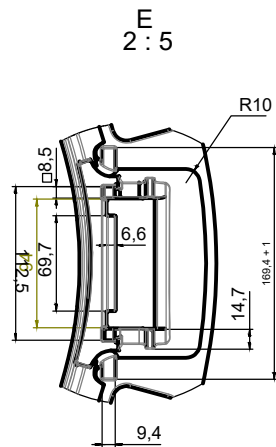
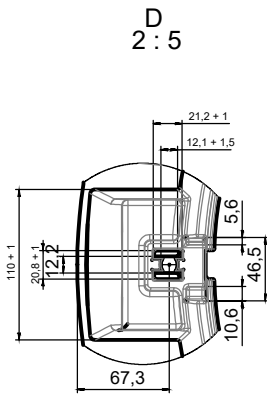
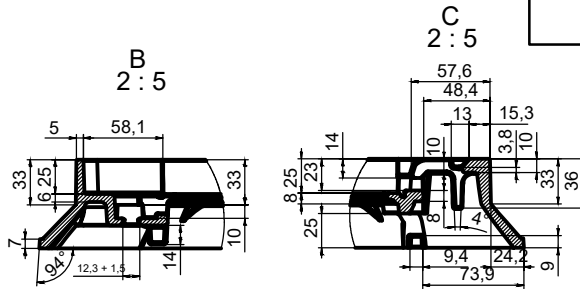
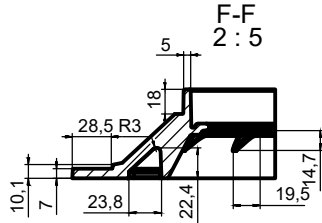
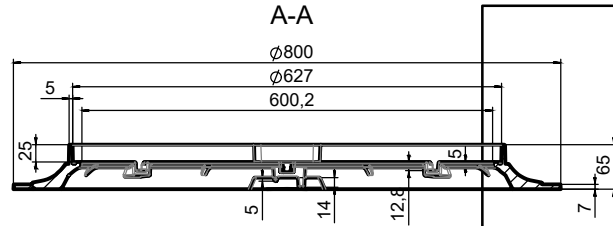
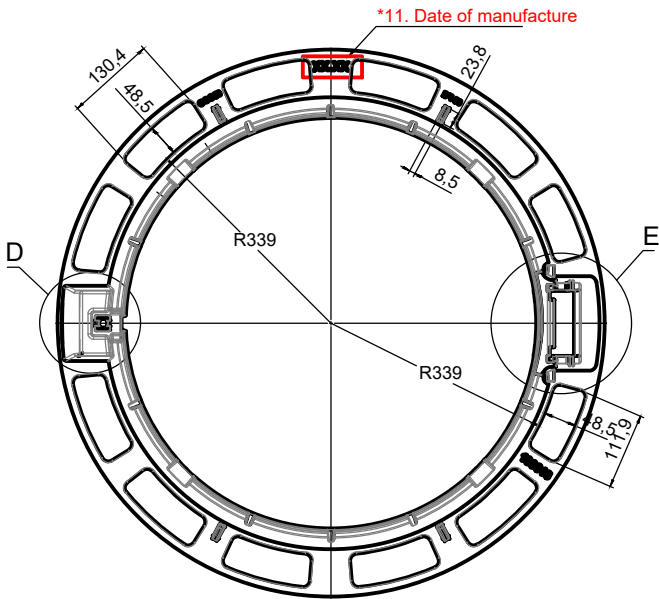
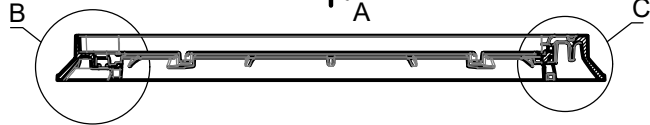
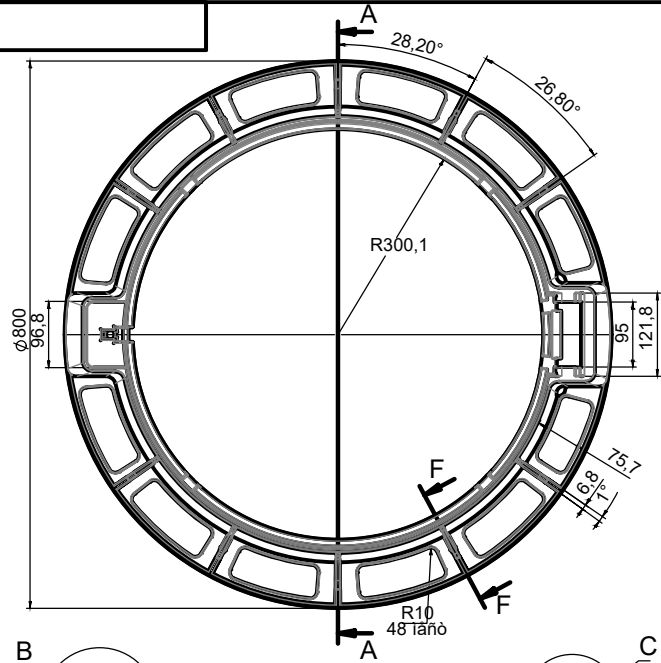
Reference No.

Sign. and date

Copy Inv. No.

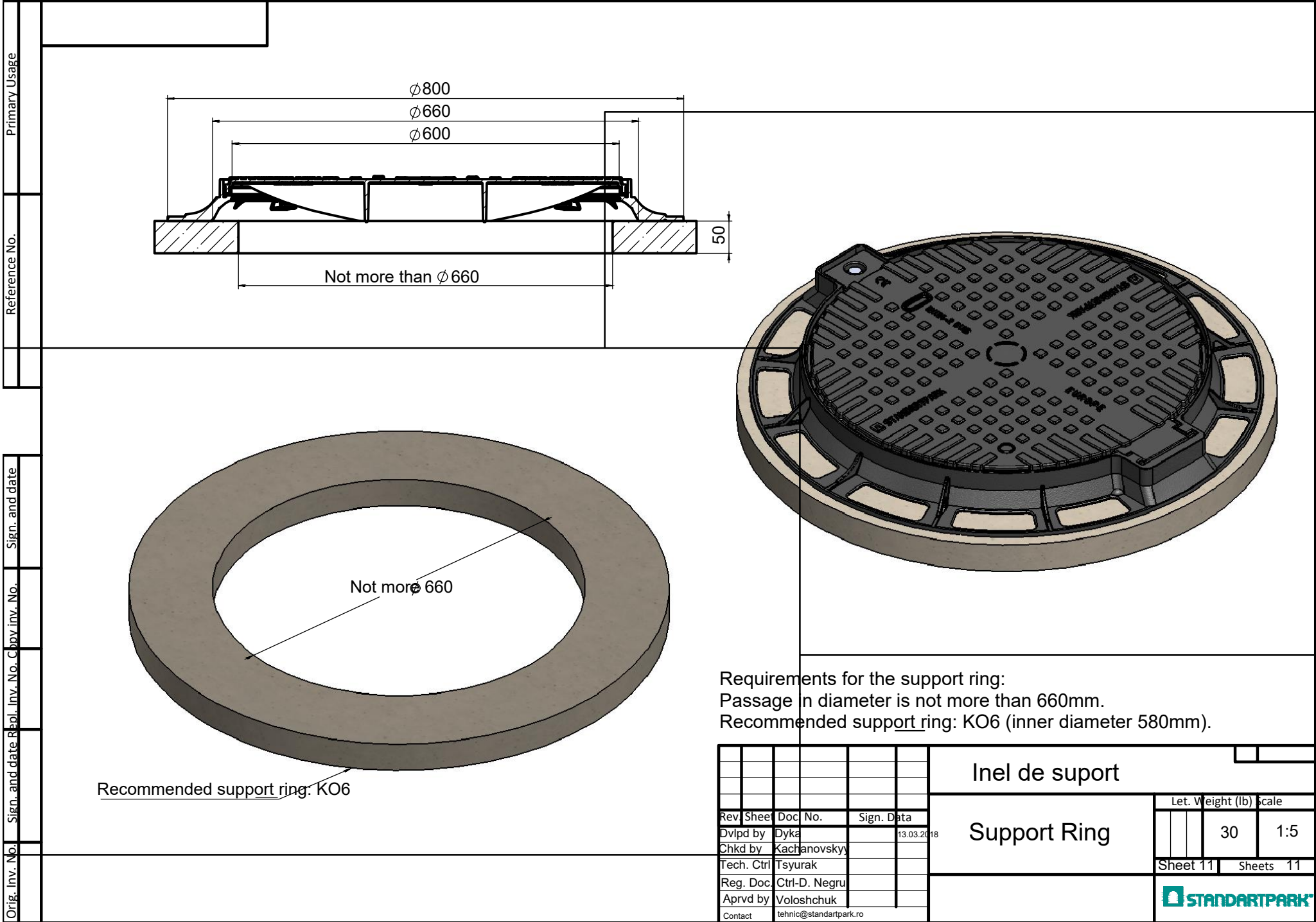
			Asamblare	
Rev. Sheet	Doc. No.	Sign. Data	Visualization of assembly 30 1:5 	
Dvlpd by	Dyka	13.03.2018		
Chkd by	Kachanovsky			
Tech. Ctrl	Tsyurak			
Reg. Doc. Ctrl	D.Negru			
Aprvd by	Voloshchuk			
Contact	tehnico@standartpark.ro			

Primary Usage  
Reference No.  
Orig. Inv. No. Sign. and date  
Epl. Inv. No. Copy Inv. No. Sign. and date



1. To make molding according to GOST 26358-84;
2. Molding accuracy 9-0-0-9 GOST 26 645-85;
3. Unspecified casting slopes 3°, for inscriptions slop 10°

Rev. Shee			Doc. No.			Sign. Data			Parti componente		Art. 33258-55-M
Dvlpd by Dyka			13.03.2018			Body			Sheet 3		Sheets 11
Chkd by Kachanovsky											1:5
Tech. Ctrl Tsyurak											
Req. Doc. Ctrl-D. Negru											
Aprvd by Voloshchuk											
Contact tehnic@standartpark.ro											



Primary Usage

Reference No.

Sign. and date

Copy inv. No.

Sign. and date

Repl. inv. No.

Sign. and date

Orig. inv. No.

Requirements for the support ring:  
 Passage in diameter is not more than 660mm.  
 Recommended support ring: KO6 (inner diameter 580mm).

				Inel de suport		
				Support Ring		
				Let. Weight (lb) Scale		
				30 1:5		
				Sheet 11 Sheets 11		
				STANDARTPARK		
Rev	Sheet	Doc. No.	Sign. Data			
Dvlpd by	Dyka		13.03.2018			
Chkd by	Kachanovsky					
Tech. Ctr	Tsyurak					
Reg. Doc	Ctrl-D. Negru					
Aprvd by	Voloshchuk					
Contact	tehnic@standartpark.ro					