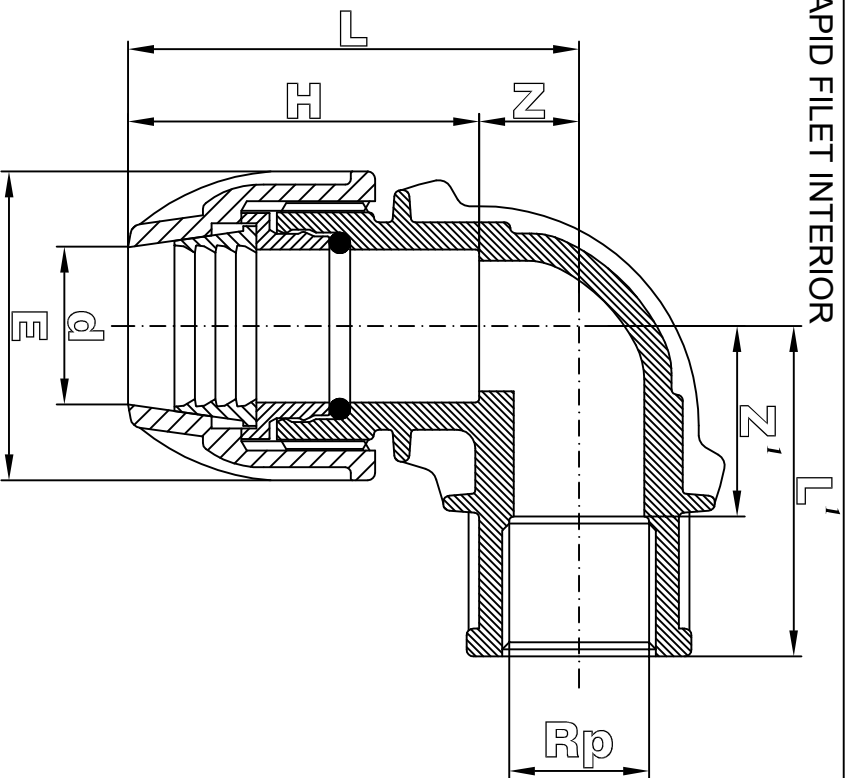


# COT RAPID FILET INTERIOR



dxRp	Z min.	H	L	Z1 min.	L'	E	g
		Toller.	Toller.		Toller.	Toller.	
20x1/2"	14	58 +3 mm	72 +3 mm	27	50 +3 mm	47 +0.30	40
20x3/4"	14	58 +3 mm	72 +3 mm	31	54 +3 mm	47 +0.30	45
25x1/2"	16	67 +3 mm	83 +3 mm	34	57 +3 mm	54 +0.30	65
25x3/4"	16	67 +3 mm	83 +3 mm	34	57 +3 mm	54 +0.30	70
25x1"	16	67 +3 mm	83 +3 mm	36	59 +3 mm	54 +0.30	80
32x3/4"	20	77 +3 mm	97 +3 mm	44	67 +3 mm	66 +0.30	110
32x1"	20	77 +3 mm	97 +3 mm	41	64 +3 mm	66 +0.30	120
* 32x1 1/4"	20	77 +3 mm	97 +3 mm	41	65 +3 mm	66 +0.30	140
* 40x1 1/4"	27	96 +5 mm	123 +5 mm	49	73 +5 mm	83 +0.50	280
* 40x1 1/2"	27	96 +5 mm	123 +5 mm	47	71 +5 mm	83 +0.50	300
* 50x1 1/2"	33	110 +5 mm	143 +5 mm	64	89 +5 mm	98 +0.50	430
* 50x2"	33	110 +5 mm	143 +5 mm	58	87 +5 mm	98 +0.50	460
* 63x2"	38	124 +5 mm	162 +5 mm	65	95 +5 mm	116 +0.50	690

\* With AISI 430 Stainless Steel reinforcing rings.

The FILBO connecting joint is designed and manufactured in according to the international standard norms:


- ISO 3458
- ISO 3459
- ISO 3501
- ISO 3503
- ISO 14236
- DIN 8076-3
- KIWA BRLK 534-01
- UNI 9561
- UNI 9562

The connecting parts of the body with the PE pipes are designed in according to the international standard norms:

- ISO DIS 3607
- DIN 8072
- DIN 8074
- UNI 7611
- UNI 7990

Male and female threaded adaptors are designed in according to the international standard norms:

- ISO 7
- UNI ISO 7-1
- BS 21

Designer			DENOMINAZIONE Femle Elbow Data Sheet. COT RAPID PE FI
6, Tsar Ivan Shishman Str. Varna – Bulgaria	Raw Material		
SCALA	Date	Injection Machine	DSH 0008
//	05.06.2007		