

## PRODUCT DATASHEET

### LED PANEL DOWNLIGHT FE-24W/300S/840L

Consumer Products Downlights | LED PANEL LIGHT SLIM



#### AREAS OF APPLICATION

- Offices, conference rooms, reception areas
- Corridors, stairways, entrance areas
- Retail, shops
- Direct replacement for luminaires with compact fluorescent lamps
- General illumination

---

#### PRODUCT BENEFITS

- Low energy consumption and energy saving
- Low installation depth
- Easy and quick installation
- Instant 100 % light, no warm-up time
- No dark and yellow spots on the diffuser
- Aluminum frame with better heating diffusion

---

#### PRODUCT FEATURES

- Recessed mounted luminaires
- Light guide made of PMMA for long lifetime
- Mercury-free lamps
- Lifetime: up to 25,000 h (at 25 °C)



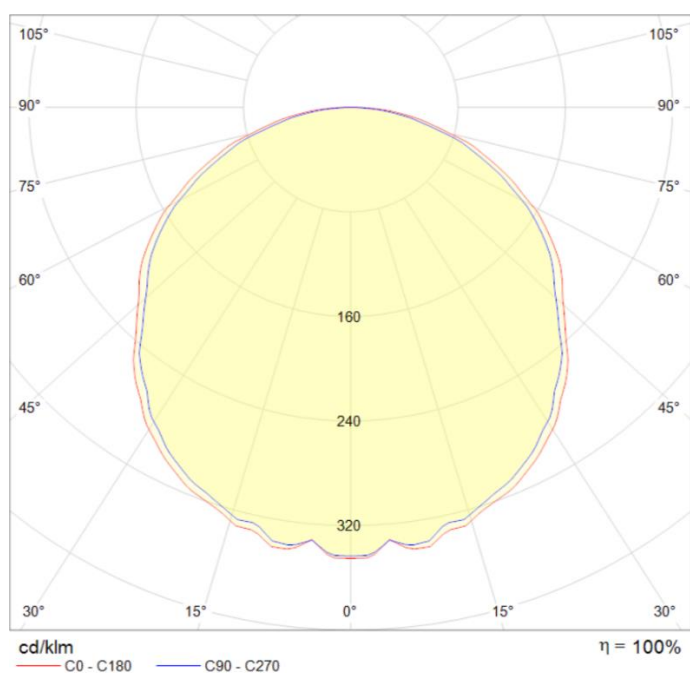
## TECHNICAL DATA

### Electrical data

Rated wattage	24.00 W
Nominal wattage	24.00 W
Nominal voltage	185-240VAC
Operating frequency	50...60 Hz
Power factor $\lambda$	> 0.50
Insulation Class	Class II
Protection class IK (shock resistance)	IK03

### Photometrical data

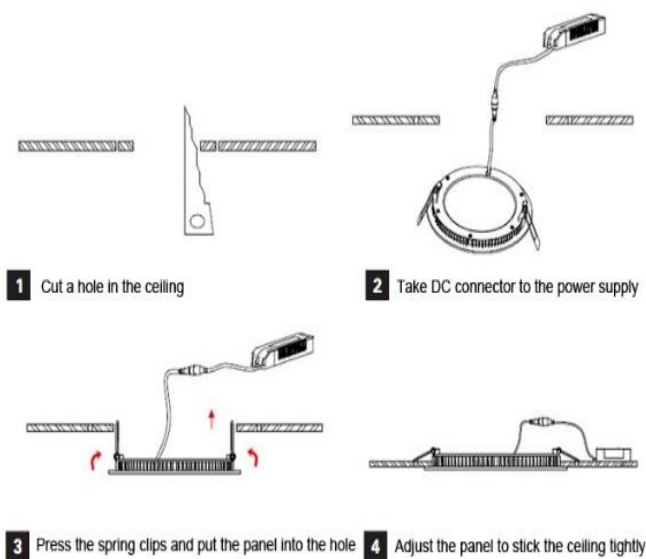
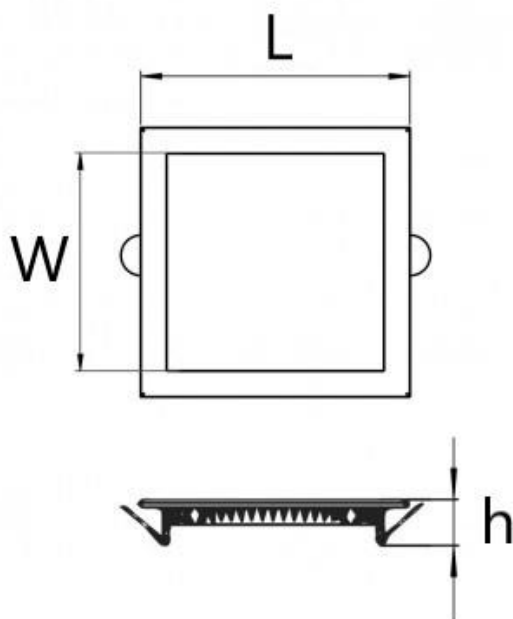
Rated luminous flux	1680 lm
Light color (designation)	Natural White
Color temperature	4000 K
Luminous flux	1680 lm
Color rendering index Ra	$\geq 80$
Standard deviation of color matching	$\leq 6$ sdc m
Nominal luminous flux	1680 lm
Rated color temperature	4000 K



### Light technical data

Starting time	< 0.5 s
Beam angle	120 °

## Dimensions &amp; weight



<b>Length</b>	300.0 mm
<b>Width</b>	300.0 mm
<b>Height</b>	22.0 mm
<b>Weight</b>	980.0 g

## Lifespan

<b>Nominal lamp life time</b>	25000 h
<b>Rated lamp life time</b>	25000 h
<b>Number of switching cycles</b>	20000
<b>Warranty</b>	2 years

## Capabilities

<b>Dimmable</b>	No
<b>LED module replaceable</b>	Not replaceable

## Temperatures &amp; operating conditions

<b>Ambient temperature range</b>	-25...+40 °C
<b>Storage temperature</b>	-25...+55 °C

## Additional product data

Installation method	Recessed
Low flicker	Yes
Mercury-free	Yes
Design / version	frosted
Body material	Aluminum
Cover material	Polymethylmethacrylate (PMMA)
Light emitting surface material	Polymethylmethacrylate (PMMA)
Product remark	All technical parameters apply to the entire lamp/Due to the complex production process for light-emitting diodes, the typical values shown for the technical LED parameters are purely statistical values that do not necessarily match the actual technical parameters of each individual product, which can vary from the typical value
Mercury content	0.0 mg
Standards	CE/CCC

## Order code/Name

Order code/Name	FE3548 LED PANEL DOWNLIGHT FE-24W/300S/840L
-----------------	---

## LOGISTICAL DATA

Product code	Packaging unit (Pieces/Unit)	Dimensions (length x width x height)	Gross weight	Volume
FE3548	Carton box 1	310 mm x 30 mm x 340 mm	1040.00 g	3.16 dm <sup>3</sup>
FE3548	Shipping carton box 10	350 mm x 335 mm x 345 mm	10400.00 g	0.040 m <sup>3</sup>

The mentioned product code describes the smallest quantity unit which can be ordered. One shipping unit can contain one or more single products. When placing an order, for the quantity please enter single or multiples of a shipping

## REFERENCES / LINKS

For further products and actual information concerning LED luminaires see [www.fucida.eu](http://www.fucida.eu)

For Guarantee see [www.fucida.eu](http://www.fucida.eu)

## DISCLAIMER

Subject to change without notice. Errors and omission excepted.

