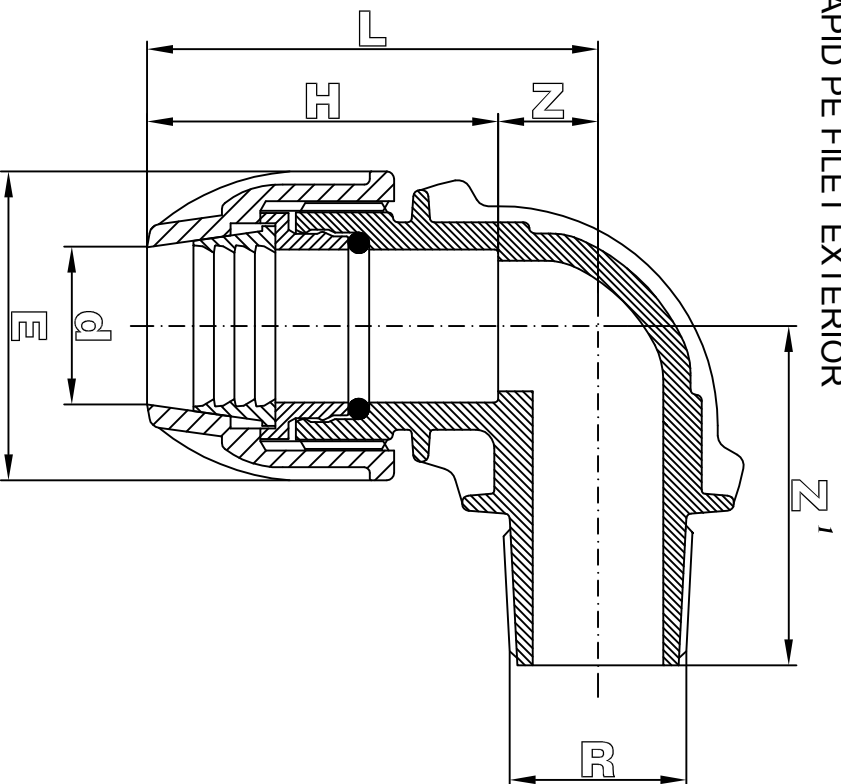


# COT RAPID PE FILET EXTERIOR



dXR	Z min.	H	L		Z'1 min.	F	G
			Toller.	Toller.			
20x1/2"	14	58 $\pm 3$ mm	72 $\pm 3$ mm		51	47 $\pm 0.30$	50
20x3/4"	14	58 $\pm 3$ mm	72 $\pm 3$ mm		51	47 $\pm 0.30$	45
25x3/4"	16	67 $\pm 3$ mm	83 $\pm 3$ mm		55	54 $\pm 0.30$	80
25x1"	16	67 $\pm 3$ mm	83 $\pm 3$ mm		55	54 $\pm 0.30$	70
32x1"	20	77 $\pm 3$ mm	97 $\pm 3$ mm		65	66 $\pm 0.30$	130
32x1 1/4	20	77 $\pm 3$ mm	97 $\pm 3$ mm		65	66 $\pm 0.30$	115
40x1 1/4	27	96 $\pm 5$ mm	123 $\pm 5$ mm		76	83 $\pm 0.50$	300
40x1 1/2	27	96 $\pm 5$ mm	123 $\pm 5$ mm		76	83 $\pm 0.50$	280
50x1 1/2	33	110 $\pm 5$ mm	143 $\pm 5$ mm		88	98 $\pm 0.50$	460
50x2"	33	110 $\pm 5$ mm	143 $\pm 5$ mm		88	98 $\pm 0.50$	440
63x2"	38	124 $\pm 5$ mm	162 $\pm 5$ mm		96	116 $\pm 0.50$	690

The FILBO connecting joint is designed and manufactured in according to the international standard norms:


- ISO 3458
- ISO 3459
- ISO 3501
- ISO 3503
- ISO 14236
- DIN 8076-3
- KIWA BRLK 534-01
- UNI 9561
- UNI 9562

The connecting parts of the body with the PE pipes are designed in according to the international standard norms:

- ISO DIS 3607
- DIN 8072
- DIN 8074
- UNI 7611
- UNI 7990

Male and female threaded adaptors are designed in according to the international standard norms:

- ISO 7
- UNISO 7-1
- BS 21

		DENOMINAZIONE	
		Male Elbow Data Sheet.	
Designer		COT RAPID PE FE	
6, Tsar Ivan Shishman Str. Varna - Bulgaria		Raw Material	Drawing N°
SCALA	Date	Injection Machine	DSH 0009
//	05.06.2007		