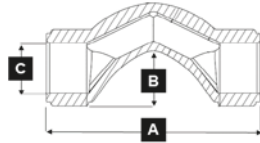
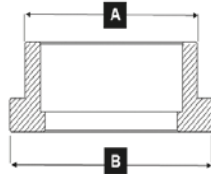


C Bridge with Socket - Saritura PP-R mufata



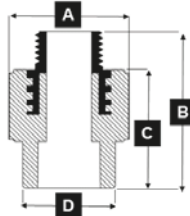
Code	Size (mm)	A(mm)	B(mm)	C(mm)	PCS/Box
213.9B.C12.E00V	20	88.0	20.0	Ø 22.0	100
213.9B.C12.F00V	25	96.0	25.0	Ø 31.0	75

Flange Adaptor - Flansa PP-R



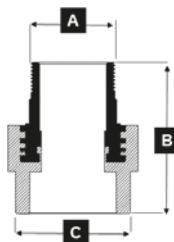
Code	Size (mm)	A(mm)	B(mm)	PCS/Box
112.1B.A10.E00	20	Ø 27.0	Ø 30.0	300
112.1B.A10.F00	25	Ø 34.1	Ø 38.7	200
112.1B.A10.G00	32	Ø 40.5	Ø 45.1	125
112.1B.A10.H00	40	Ø 50.2	Ø 57.1	60
212.1B.A10.I00	50	Ø 62.0	Ø 70.5	30
112.1B.A10.J00	63	Ø 79.3	Ø 89.4	24
112.1B.A10.K00	75	Ø 90.2	Ø 105.7	20
112.1B.A10.L00	90	Ø 109.8	Ø 124.3	10
112.1B.A10.M00	110	Ø 132.0	Ø 149.5	8
112.1B.A10.N00	125	Ø 150.0	Ø 178.0	1
112.1B.A10.O00	160	Ø 190.0	Ø 222.0	1

Adaptor Male - Adaptor (mufa) Filet exterior



Code	Size (mm)	A(mm)	B(mm)	C(mm)	D(mm)	PCS/Box
112.1B.B21.EQ0	20 x 1/2"	Ø 37.5	37.0	50.0	Ø 29.0	140
112.1B.B21.ER0	20 x 3/4"	Ø 43.0	55.0	40.0	Ø 29.0	90
112.1B.B21.FQ0	25 x 1/2"	Ø 37.5	50.0	37.0	Ø 34.0	120
112.1B.B21.FR0	25 x 3/4"	Ø 43.0	55.0	40.0	Ø 34.0	90
112.1B.X25.GS0	32 x 1"	Ø 50.0	62.0	45.0	Ø 45.0	55

Hex. Adaptor Male - Adaptor (mufa) hexagonal Filet exterior



Code	Size (mm)	A(mm)	B(mm)	C(mm)	PCS/Box
112.1B.B21.GS0	32 x 1"	Ø 59.0	76.0	Ø 42.0	36
112.1B.B21.HT0	40 x 1 1/4"	Ø 74.0	85.0	Ø 51.2	20
112.1B.B21.IU0	50 x 1 1/2"	Ø 74.0	86.8	Ø 66.0	16
112.1B.B21.JV0	63 x 2"	Ø 84.8	102.0	Ø 84.8	12
112.1B.B21.KW0	75 x 2 1/2"	Ø 99.0	107.2	Ø 99.0	8
212.9B.B21.LX0V	90 x 3"	Ø 134.0	131.0	Ø 119.4	3
212.0B.B21.MZ0	110 x 4"	Ø 174.6	139.0	Ø 145.0	2