



Corovent Eco

Ridge and hip sealing tape

BASIC PRODUCT

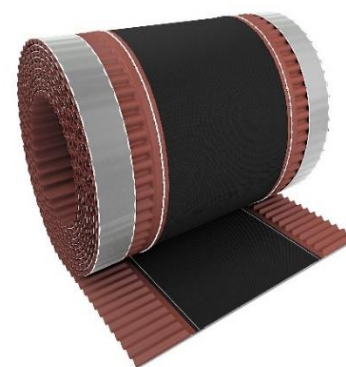
Ventilation and sealing tape made of polypropylene non-woven fabric, flexible pleated aluminium tapes and self-adhesive butyl tapes. It provides ventilation to the roof, while protecting against weather conditions and insects.

Advantages

- ✓ sealing and ventilation of the roof ridge space
- ✓ protection against precipitation
- ✓ versatility – suitable for all kinds of roof coverings
- ✓ wide range of colours
- ✓ easy to use

Application

- ✓ for the protection and ventilation of ridges and hip pitched roofs



Characteristics

Material	aluminium, polypropylene non-woven fabric, butyl	Joining strength: Shear strength tape, (N/50 mm):	
Colour	anthracite, black, light brown, dark brown, brick, chestnut	- tape - clay roofing tile	≥ 100
Length (m)	5	- tape - cement tile	≥ 100
Width (mm)	310	- strip - galvanized steel sheet	≥ 90
		Nominal thickness of the paint film, (µm):	7
		Adhesion - resistance to tearing off the substrate, grid method, grade:	0

Installation

1. Unroll the product directly on the ridge patch and then attach to the ridge patch (e.g. staples).
2. The edges of the ridge tape should be correctly profiled and then sealed to the tiles with butyl adhesive strips on the edges of the ridge tape.
3. The substrate (tiles) should be cleaned before bonding.
4. The works should be conducted at temperature >5°C.
5. If it is necessary to connect two ridge tapes, an overlap of min. 75 mm.

Storage

Store the product in its original packaging in a protected, dry and clean place away from heat sources and sunlight.

Packaging

Quantity per box (pcs.):	4
Quantity on a pallet (box./pcs):	60/240

The information contained in this data sheet, particularly recommendations regarding the manner and conditions of application as well as the scope of use of the product, have been developed based on our experience, our best knowledge and in good faith. Apart from the information given in this data sheet, health and safety regulations, etc. must be observed. This technical data sheet supersedes all previous versions applicable to this product.