

TECHNICAL CHARACTERISTICS

2 versions :

- ø32 mm push-fit inlet, ø32mm push-fit outlet, fitted with a bend and a 1"1/4 bolt for connection to the waste. Applications : washbasin, handbasin, bidet.
- ø40 mm push-fit inlet, ø40mm push-fit outlet, fitted with a bend and a 1"1/2 bolt for connection to the waste. Applications : sink, bath, shower

Materials :

- Body : Thermoplastic elastomer
- Membrane : Silicone
- Washers : Rubber
- Bend : Polypropylene

Flow rate in 120mm of water :

	Horizontal position	Vertical position	NF requirements
ø32	0,64 l/s	1,16 l/s	0,60 l/s
ø40	0,83 l/s	1,16 l/s	0,60 l/s

Fitting force of tubes :

- ø40 => 50N
- ø32 => 50N

Water seal :

- 0 mm (odours blocked by obturation using a silicone membrane).

Endurance :

- Watertight after 1000 hrs of ageing at 60°C
- Resists 300,000 water passage cycles
- Watertight under 1m of cold water (15°C)
- Watertight under 1m of warm water (95°C)
- Chemical resistance : no deterioration of the trap when tested with various commercial cleaning products.

The SENZO® trap has successfully passed CSTB tests and is the subject of a detailed test report.

Recommendation :

- The SENZO® trap must be installed between 2 rigid, fixed pipes, to ensure that it is kept in position. It must not be fitted with a flexible or extendible connection on the outlet.
- The SENZO® trap must not be used under a sealed shower basin. In this instance, Unified Technical Documents recommend gluing the trap to the drainage pipe. The SENZO® trap cannot be glued, but can be used with a shower cabinet.

Packaging :

- Quadrichrome blister or bag.



PROGRAMME

Description	Product code	Code EAN	Packaging	Language	Boxed Qty
Senzo 1"1/4 outlet ø32	31560001	337553714724 3	Blister	F/NL	01
Senzo 1"1/4 outlet ø32	31560002	337553714725 0	Bag	F/NL/UK/D/E/P/I	01
Senzo 1"1/2 outlet ø40	31160001	337553714722 9	Blister	F/NL	01
Senzo 1"1/2 outlet ø40	31160002	337553714723 6	Bag	F/NL/UK/D/E/P/I	01
British Adaptor ø40	39452001	337553905620 8	Bulk	F/NL/UK/D/E/P/I	01

F170 - 05/2011

SENZO® THE SEAL-LESS TRAP



An innovation that perfectly illustrates the art of not stopping at what you can see. All traps are fitted with a seal...

What if we invented a trap without a seal ?

This is how the SENZO® was born, the dry trap fitted with a silicone membrane that moves to allow water to pass through and then sticks itself back in place to trap odours.

- ⊕ Extra-flat !
- ⊕ Absolute flexibility for easy and quick installation !
- ⊕ Horizontal or vertical installation
- ⊕ No risk of de-siphoning
- ⊕ Integrated ventilation of pipes

PRINCIPLE

SENZO® is made up of a flexible envelope made from flexible thermoplastic elastomer that houses a silicone membrane, which ensures that odours are retained. When the water flows through, the silicone membrane moves aside to allow the flow to pass through. Afterwards, it closes back up again thus creating a barrier against bad smells. The slightly anti-slip texture of the silicone helps make the product more efficient : once closed again, the two walls of the membrane form a perfect hermetic seal.

In a traditional trap, the anti-odour barrier is created by keeping a small quantity of water in the trap. This is called the «water seal». To be effective, the water seal must measure a minimum of 50mm. By overcoming the water seal constraint, the SENZO® also tackles the constraints of :

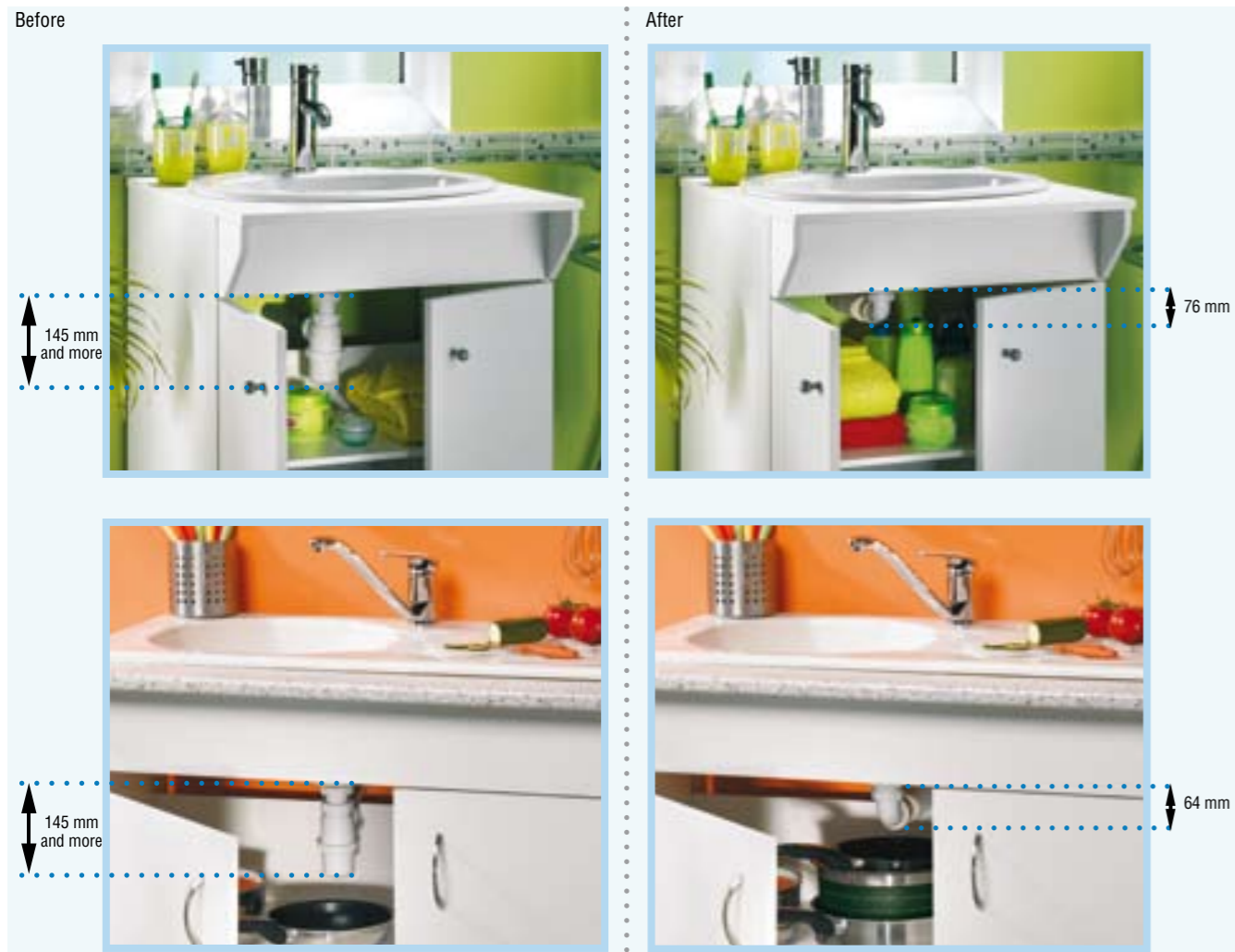
- size,
- rigidity,
- installation.

The SENZO® trap is extra-flat and totally flexible ! It can be installed both horizontally and vertically.

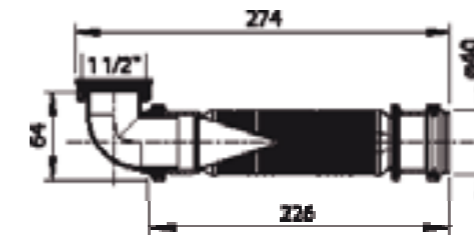
CONSUMER BENEFITS

Extra-flat !

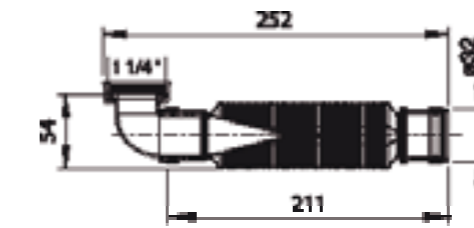
The SENZO® trap measures less than 76mm in the horizontal position, compared with 145mm for a traditional trap. This represents a space saving so that you can store things under the basin or sink.



For connection to $\varnothing 40$ PVC tubes



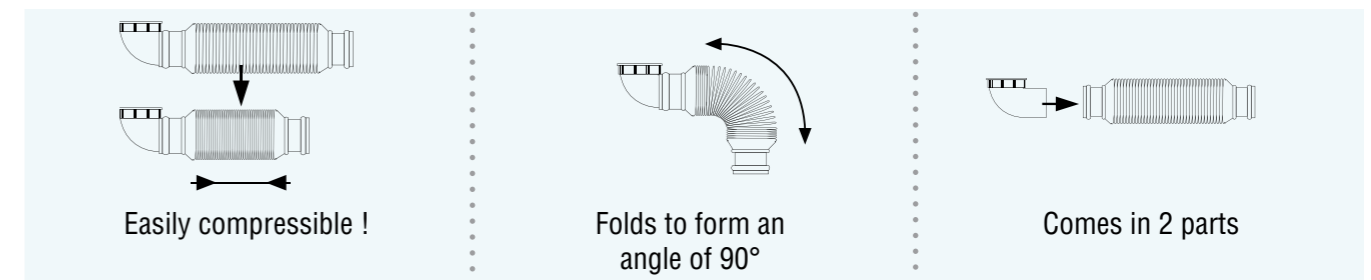
For connection to $\varnothing 32$ PVC tubes



Fully flexible !

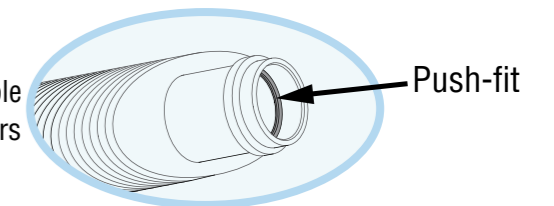
The SENZO® trap is flexible in every sense of the word :

- it is easily compressible, making it easy to fit onto the drainage tube in place
- it bends to form angles of up to 90°, laterally or vertically, without lessening performance
- comprising two independent parts, with the flexible body integrating both the membrane and the rigid bend, it may also connect with the waste outlet using the bend or bent the wall between two PVC tubes.



Easy and quick to install

Both ends are «push-fit». The SENZO® trap is fitted with a simple connector, with no screwing or gluing. The double finned washers and the retention ring ensure a perfect seal.



No de-siphoning

In a traditional trap, the water seal may occasionally disappear (this is called de-siphoning), either following an aspiration phenomenon in the pipes, or following evaporation due to excess heat.

This results in disagreeable smells coming from the sewers.

There are no risks with the SENZO® trap ! The silicone membrane is still active, under any conditions of use.

Integrated ventilation of pipes

In a traditional installation, the use of a membrane is preferred on the aerator pipes (also called anti-vacuum) to prevent aspiration phenomena that cause de-siphoning. This does not happen with the SENZO® trap. If aspiration occurs, the membrane opens very slightly and very furtively to allow a small amount of air from the part to pass through, which has the effect of ventilating the pipes and stopping the current aspiration phenomenon.