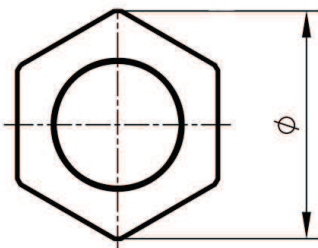
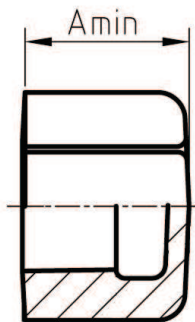


# TECHNICAL INFORMATION

Type 300  
Hexagon Cap  
T1



SIZE	Amin	$\phi$
1/4"	15	-
3/8"	17	25
1/2"	19	29.4
3/4"	22	36
1"	24	42
1 1/4"	27	51.4
1 1/2"	27	57.8
2"	32	70.8
2 1/2"	35	89.7
3"	38	102.6
4"	45	132

## Technical characteristics:

- products according to DIN EN 10242, Design Symbol A
- certified by DVGW CERT