

Cromatic Gloss



produs / product	cm	EN		m ²		m ²	kg	brutto kg
Faianță / Wall tile	50 x 25 x 0,9	EN 14411:2012, Annex K, BIII GL	11	1,38	45	62,10	21,0	970
Decor / Insert	50 x 25 x 0,9	EN 14411:2012, Annex K, BIII GL	10	1,25				
Brâu / Listel	50 x 2,5 x 0,9	EN 14411:2012, Annex K, BIII GL	20	0,25				
Gresie porțelanată rectificată / Porcelain rectified tile	60 x 15 x 0,9	EN 14411:2012, Annex G, BIa GL	11	0,99	48	47,52	18,7	922

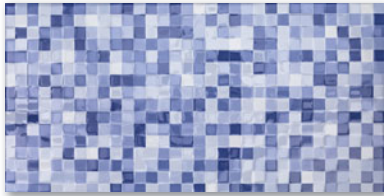


50 x 25

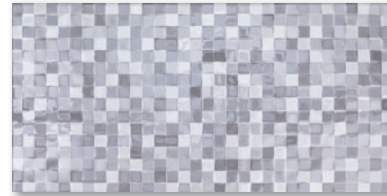


2051-0210
alb/white | lucios/glossy

SL



2051-0212
albastru/blue | lucios/glossy



50 x 25



2051-0211
gri/gray | lucios/glossy



2651-0108
alb/white | lucios/glossy



50 x 2,5



2505-0121 Platină
platină/platinum | lucios/glossy





60 x 15



6463-0043 Rovere
gri/greige | mat/matt PEI 4

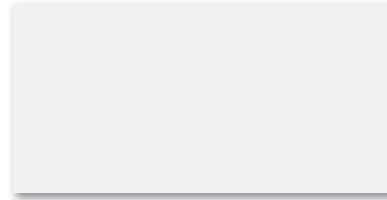
Cromatic Gloss



produs / product	cm	EN		m ²		m ²	kg	brutto kg
Faianță / Wall tile	50 x 25 x 0,9	EN 14411:2012, Annex L, BIII GL	11	1,38	45	62,10	21,0	970
Decor / Insert	50 x 25 x 0,9	EN 14411:2012, Annex L, BIII GL	10 / 5 SET	1,25				
Gresie porțelanată rectificată / Rectified porcelain tile	60 x 30 x 0,9	EN 14411:2012, Annex G, BIIa GL	7	1,26	40	50,40	23,6	960
Gresie porțelanată rectificată / Porcelain rectified tile	60 x 15 x 0,9	EN 14411:2012, Annex G, BIIa GL	11	0,99	48	47,52	18,7	922



50 x 25



2051-0152
alb/white | lucios/glossy



2651-0101
alb/white | lucios/glossy



2651-0102
alb/white | lucios/glossy



2651-0103
alb/white | lucios/glossy

SET

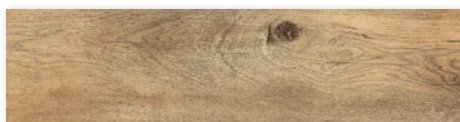


2651-0104
alb/white | lucios/glossy

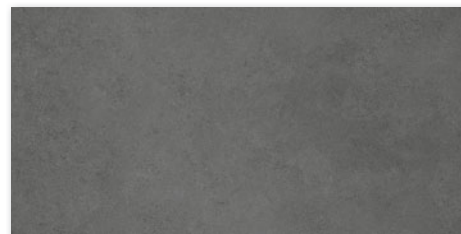
SET



60 x 15



6463-0031 Pavimento
bej/beige | mat/matt PEI 4



6460-0270 Tanum
antracit/anthracite | mat/matt PEI 4

60 x 30

