

Chateau+ installation manual



Class 23/33 AC5: the **Chateau+** laminate floor is designed for:

- Heavy domestic use: bedrooms, living rooms, kitchens, entrances, bathrooms
- Heavy commercial use: corridors, department stores, schools, open plan office

Laminate is not suitable for saunas, verandas or outdoor use.

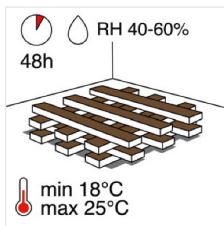
Chateau+ is a unique laminate that can be installed in **multiple patterns** thanks to the exclusive **OmniLoc locking system**, developed by BerryAlloc engineers. It is easy to install and creates a strong and solid connection.

- The **“herringbone”** and **“mosaic”** patterns require two plank types: A planks and B planks. These are packaged separately, so do not forget to notify your BerryAlloc dealer that you require both types if you choose this pattern.
- The **“shipdeck”** and **“ladder”** patterns only require one plank type: the A planks.

While Chateau+ laminate is primarily designed for floating installation, it can also be fully glued to the subfloor without the need for underlay. If you prefer a fully glued installation, please ask for our separate Chateau+ glue-down manual. We recommend a glue-down installation and aluminium profiles for commercial spaces.

For a perfect result that meets the warranty requirements, we advise you to carefully follow the installation instructions listed below. To prevent unintended damages, it is advisable to complete the installation of the laminate floor as the final step in the renovation process.

1. Planning your installation



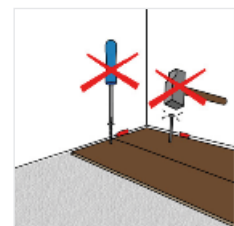
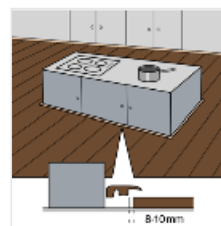
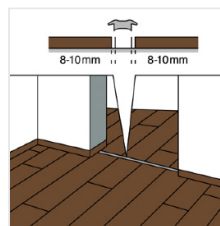
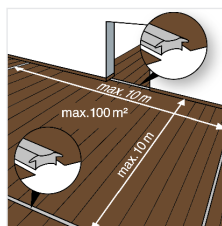
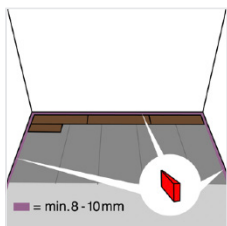
It is necessary to store the laminate boxes at room temperature for at least 48 hours before installation. Do not open the packs but make sure to stack them so they have maximal air contact. The floor should be installed at a room temperature of 18-25 °C and a relative humidity of 40-60%.

tools:

- sawing machine
- the BerryAlloc installation tool (ref. 63003584)
- spacers, measure tool and pencil, angle meter

For your safety, use protective clothing: gloves, dust mask, protective glasses.

Don't forget the Excellence Plus underlay, matching skirtings and finishing profiles.

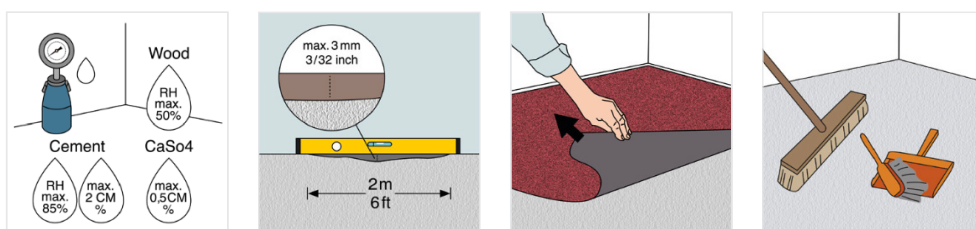


Chateau+ is a wooden floor, and should be able to expand/shrink freely, therefore:

- Do not screw the floorboards to the subfloor.
- Do not install the laminate floor under fixed constructions such as kitchen cabinets or built-in closets.
- Leave an 8-10 mm expansion gap between walls and other fixed constructions so that the floor can move.
- Always install expansion profiles in doorways.
- Install expansion profiles in areas where the room length/width exceeds 10 m.

2. Preparing the subfloor

BerryAlloc laminate can be installed on most hard subfloors, e.g. chip/plasterboards, non-compressible PVC, or concrete (keep in mind to verify if the existing subfloor construction is fixed).



The subfloor must be totally dry:

- wooden and wood based material, max. 50 % relative humidity
- concrete and light concrete floor, max. 2,0 CM % (1,8 CM % if floor heating)
- plaster and plaster based floor, max. 0,5 CM % (0,3 CM % if floor heating)

The subfloor has to be even (max. height difference of 3 mm per 2 m).

Smoothen sharp edges and fill any holes.

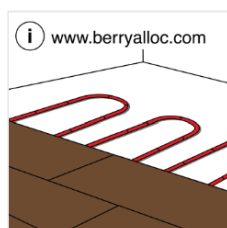
This is important because an uneven subfloor can cause squeaking noises.

Soft material like a wall-to-wall carpet or cushion vinyl floor needs to be removed.

Clean the subfloor before you start the installation.

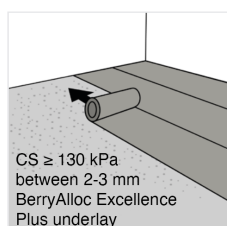
On an existing wooden floor, BerryAlloc laminate should be installed perpendicular to the old floorboards.

3. Floor heating/cooling



If you have a subfloor heating system, be sure to read our separate manual for installing laminate on top of floor heating.

4. Underlays



BerryAlloc underlays are specially developed for our floors, and with the same high quality standards, to ensure a perfect result. The specific design of the Chateau+ planks requires a high performance underlay with a compression strength of min. 130 kPa. and a thickness between 2 and 3mm. The BerryAlloc Excellence Plus underlay (ref. SEPLUS10) is the perfect base for Chateau+.

In fully glued installations, the laminate floor must be glued to the subfloor. In that case, you cannot use an underlay.

5. Installing your Chateau+ floor



Check all planks for visible defects in optimal light conditions, both before and during installation. Planks with defects must not be used.

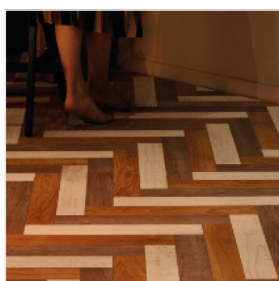
For the most natural floor pattern, ensure to mix the designs of the planks throughout the installation.

Pick your pattern!

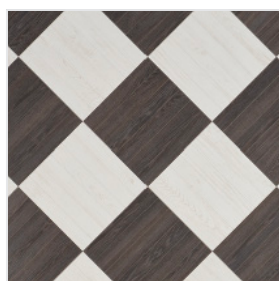
Chateau+ is a dream floor for creative installers. Multiple patterns are possible, and a wide variety of colors allows you to mix and match, and add some personality to your royal floor: **herringbone**, **shipdeck**, **ladder**, and **mosaic**.



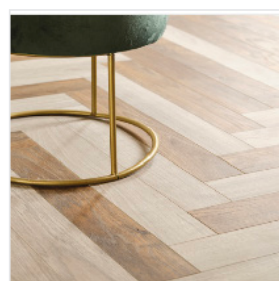
herringbone - Charme Black & Chestnut White



herringbone - Chestnut White, Java Natural and Java Brown



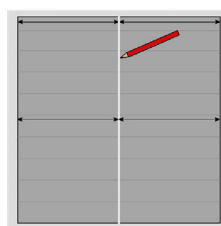
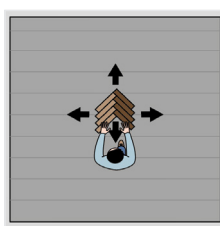
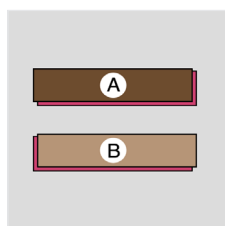
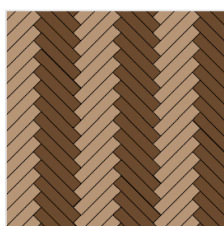
diagonal mosaic - Charme Black & Chestnut White



herringbone random - Java Light Grey & Java Brown

All the designs of Chateau+ are also available in the standard plank size of 1288x190mm water resistant Ocean 8 V4. This allows you to switch plank sizes in different rooms while maintaining the same design and overall look.

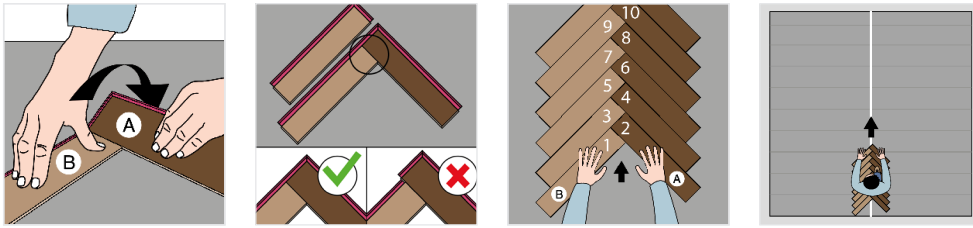
5.1 The **herringbone** pattern



For the herringbone pattern, you'll need two different plank types: A planks and B planks.

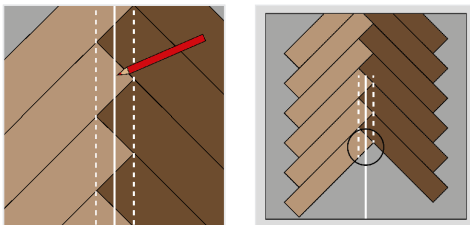
If you take both planks and place the long side with the groove towards you (marked in red above), the groove will continue to the right on the A-plank and to the left on the B-plank. All planks are also marked with "A" or "B" on the back. Keeping different stacks can make your job easier.

The unique **OmniLoc locking system** enables you to start in the middle of the room, and continue the installation in all directions. Measure the middle of the room and draw a centerline on the Excellence Plus underlay. This will help you align the herringbone pattern with the centerline during installation.



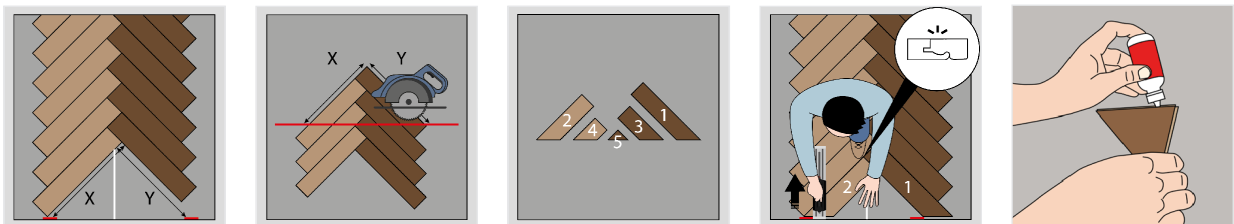
Start assembling a herringbone pattern by using a B plank first, followed by an A plank. Ensure that the longer groove side is on the 'outside' of the V, allowing you to slide the next plank into position using the groove. Before installing the next plank, check if the A and B planks are perfectly aligned.

Alternate B and A and continue until you complete one full row.



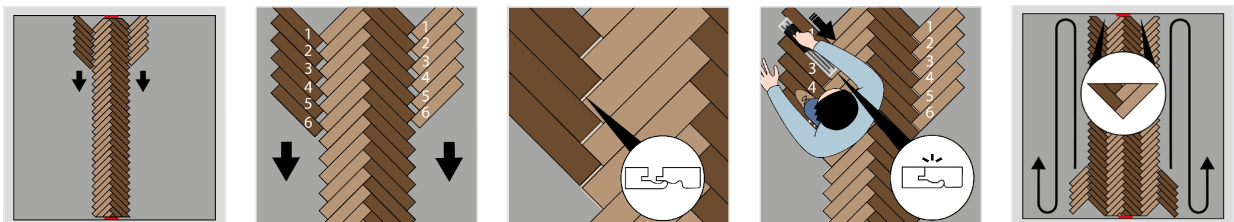
To determine the center of the herringbone pattern, draw two parallel lines connecting the corners of the planks. The midpoint of these lines marks the center of your herringbone pattern.

Align the center line of the herringbone pattern with the center line of the room on the underlay before proceeding.



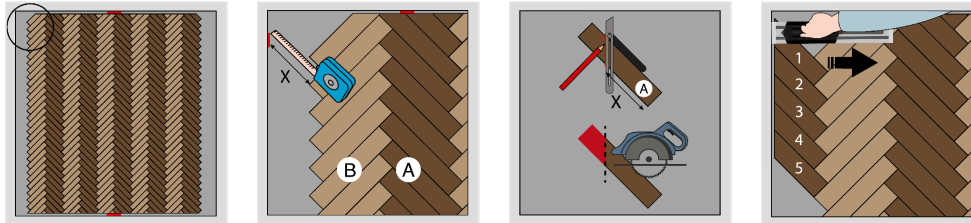
Measure the distance between the wall and the inner corner of the floor on both sides (size "X" and "Y"). Deduct the space for the expansion gap of 8-10mm.

Assemble a few planks in herringbone, and transfer the dimensions to those planks. Draw the cutting line and cut the triangle that will fit the gap. Install the planks one by one, use the installation tool to pull the plank in the loc, and use spacers to prevent the floor from moving. Apply wood glue if you install small pieces.



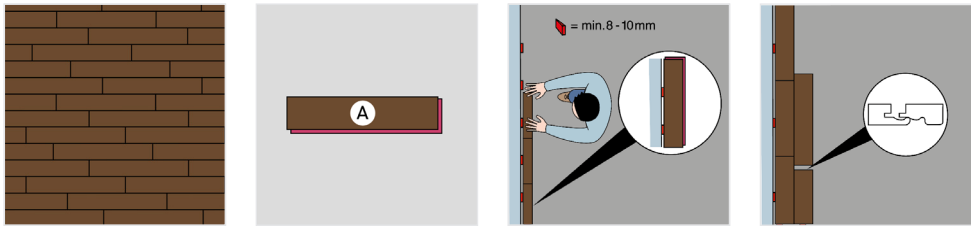
To continue the installation, move to the side of the B planks. Take a pile of A planks and prepare 6 planks for locking by placing them precisely in front of the lock of the B plank. Then, pull each of the 6 planks one by one into the lock using the **BerryAlloc installation tool**. Continue this process with 6 more planks until you complete that row. Repeat the same procedure on the other side with B planks.

Before continuing the installation, we recommend fixing these 4 complete rows to the center by completing the 2 triangles first. Afterward, you can easily build more rows to the left and right.

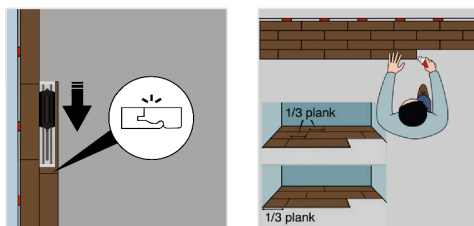


To cut the planks to size at the side wall, measure the distance from the wall to the corner of the plank, where the laminate design ends. Remember to consider the expansion gap of 8-10mm. Place a plank in the correct position and transfer the dimensions to the side of the plank. Draw a 45° line across the plank and cut it accordingly. Use the installation tool to pull the planks into place. In high-traffic areas, we recommend using wood glue in the locking system.

5.2 The **shipdeck** pattern



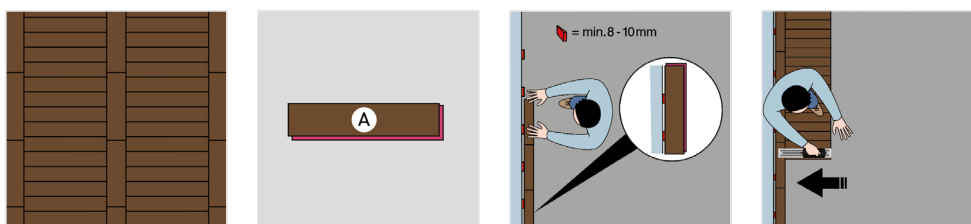
If you choose the shipdeck pattern, you only need one plank type, such as A planks. First, install the Excellence Plus underlay according to the instructions on the underlay packaging. Place the first plank in the corner of the room with the groove side pointing in the direction of the installation. Maintain an expansion gap of 8-10mm between the floor and the walls.



When placing the second plank, ensure that the planks are perfectly aligned. Continue the installation and use the installation tool where necessary.

For a natural result, stagger the short sides randomly, but always maintain a distance of approximately 1/3 plank between each stagger.

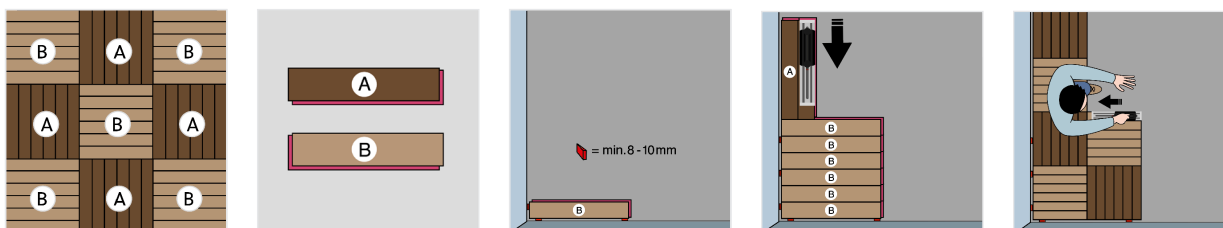
5.3 The **ladder** pattern



Chateau+ can also be installed in a ladder pattern, using only one plank type, such as the A planks.

Begin by installing the Excellence Plus underlay according to the instructions provided. Start the installation as you would for a shipdeck pattern. Then, proceed to install the next row in the opposite direction, using the installation tool to lock the planks into the side of the other planks. Remember to maintain an expansion gap of 8-10mm between the floor and the walls.

5.4 The **mosaic** pattern



For the classic mosaic pattern, you require both plank types: A and B.

First install the Excellence Plus underlay according to the instructions on the underlay packaging. Install 6 B planks, with an expansion gap of 8-10mm between the floor and the walls. Then, change the direction and proceed with the 6 A planks, ensuring that the groove always points in the laying direction. Use the installation tool to lock the short side into the long side, and ensure that the planks are perfectly aligned.

Continue the installation square by square, row by row.

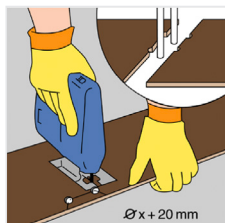
5.5 doorframes and heating pipes



Wooden doorframes should be shortened enough to make a plank and underlay fit underneath. Lay a panel facedown next to the doorframe.

Saw the doorframe, then slide the plank under the doorframe. Keep an expansion gap under the doorframe of 8-10 mm!

When dealing with a metallic doorframe, you can use our Fillertwine to fill the expansion gap before applying a flexible sealant. This will always allow the laminate to freely expand or shrink.



If you have heating pipes, measure their exact position and mark it on the laminate. Add 20 mm to the dimension of the pipe, because the laminate has to be able to move in all directions around the pipe.

Saw in an angle of 45° from the drilling holes to the side of the laminate and put the laminate in place.

6. A perfect finish

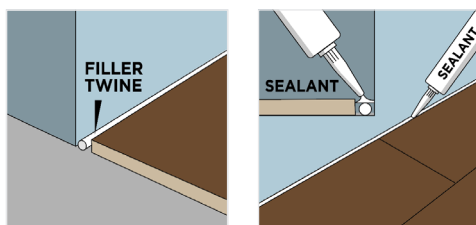
Additional instructions for a water resistant finish of your Chateau+ floor. After installing a Hydro+ laminate, it is important to seal the edges of the laminate with a sealant that repels water.

Step 1:

Put a BerryAlloc Fillertwine (ref. 63002899) in the expansion gap. The Fillertwine facilitates the expansion and contraction of the laminate. Use Fillertwine in the expansion gap beneath floor profiles like T-profiles, reducers, or in situations where installing a skirting is impractical, such as around metallic doorframes, posts, etc.

Step 2:

Fill the expansion gap with Hydro+ Sealant (ref HPSILICONE). The sealant should touch the wall and the laminate and be applied in a way that it completely closes the gap. Use sealant on top of the Fillertwine before you install a floor profile, to avoid water contact with the side and base of the laminate.



Hydro+ accessories

We offer the Hydro+ accessories both separately and as a set (Hydro+ Set 2-in1 ref. 63002897), including Fillertwine and Hydro+ Sealant, to seal 10 meters.

For a nice finish of the expansion gaps, BerryAlloc offers a wide range of matching and neutral accessories with a timeless design:

- skirtings 6 cm and 8 cm
- quarter rounds
- floor profiles: T-profile, reducer, end profile
- aluminium floor profiles

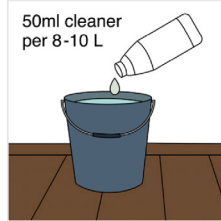
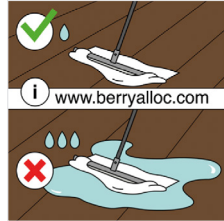
Paintable white skirtings are also available and can be used unpainted, or painted in the same colour as your wall.

When installing accessories, always keep in mind that the floor needs to be able to move in all directions (expand/contract).

This means:

- Skirtings should never be attached to the floor. They can be fixed to the wall with the BerryAlloc Clips. In case your walls are not straight, you can use the BerryAlloc glue to fix the skirting to the wall.
- After installing a skirting or profile, do not seal/fix it to the laminate with sealant. The movement of the laminate will cause cracks in the sealing product which makes the sealant ineffective and unaesthetic.
- Joints on fixed building elements (doorframes, heating pipes, etc.) should never be completely sealed with elastic filler. Use a Fillertwine first and then finish with elastic filler. The flexibility of the Fillertwine will allow the floor to move.
- Profiles, doorstops, and suchlike should not be screwed through the laminate into the subfloor.

7. Care and maintenance



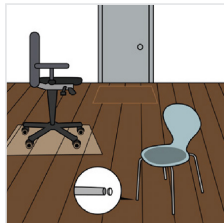
A laminate floor is very easy to clean:

DRY CLEANING: with a brush, mop with dry wipes or vacuum cleaner

WET CLEANING with a well wrung-out cloth – avoid using too much water!

Clean up any spilled liquids immediately.

We strongly recommend using the BerryAlloc laminate cleaner LC1000, it's specially developed to clean our laminate floors and leaves no traces. Never use steam cleaners on laminate.



Put doormats at every entrance to protect your laminate from dirt and sand. Lift heavy furniture and put felt pads on the legs of your chairs. Use a protective floor mat under your castor chair.

Laminate cannot be polished or treated with products that contain wax or oil. For more details: read our care and maintenance manual.

8. Warranty

By following the instructions mentioned above, you will extend the longevity of your laminate flooring and ensure the validity of the warranty.

For more info, we refer to our warranty conditions and warranty policy.

enjoy your BerryAlloc floor!

Installation video



BerryAlloc
Chateau+