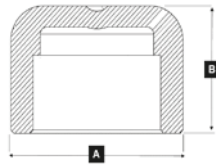
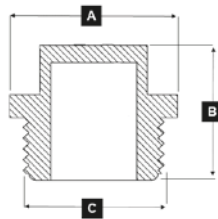


End Cap - Dop PP-R



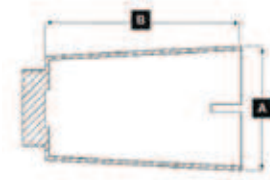
Code	Size (mm)	A(mm)	B(mm)	PCS/Box
112.1B.A07.E00	20	Ø 29.0	25.0	350
112.1B.A07.F00	25	Ø 34.5	27.0	270
112.1B.A07.G00	32	Ø 41.8	32.0	150
112.1B.A07.H00	40	Ø 52.0	37.5	90
112.1B.A07.I00	50	Ø 66.0	44.0	50
112.1B.A07.J00	63	Ø 83.0	51.0	24
112.1B.A07.K00	75	Ø 100.0	56.0	16
112.1B.A07.L00	90	Ø 119.0	65.5	9
112.1B.A07.M00	110	Ø 146.0	80.0	4
112.1B.A07.N00	125	Ø 167.0	80.0	1
112.1B.A07.O00	160	Ø 213.4	106.0	1

Threaded Cap - Dop PP-R Filet exterior



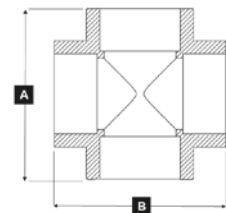
Code	Size (mm)	A(mm)	B(mm)	C(mm)	PCS/Box
112.1B.A08.E00	20	Ø 25.0	36.0	Ø 20.5	300
112.1B.A08.F00	25	Ø 33.0	29.0	Ø 28.5	300
112.1B.A08.G00	32	Ø 39.0	31.0	Ø 32.7	200

Long Threaded Cap - Dop lung Filet exterior



Code	Size (mm)	A(mm)	B(mm)	PCS/Box
212.1B.A08.E00V	20	Ø 33.0	52.0	100

Cross - Cruce PP-R



Code	Size (mm)	A(mm)	B(mm)	PCS/Box
112.1B.A13.E00	20	51.0	51.0	105
112.1B.A13.F00	25	59.0	59.0	60
112.1B.A13.G00	32	70.0	70.0	32
112.1B.A13.H00	40	84.0	84.0	20