



WWW.GEWISS.COM

GEWISS

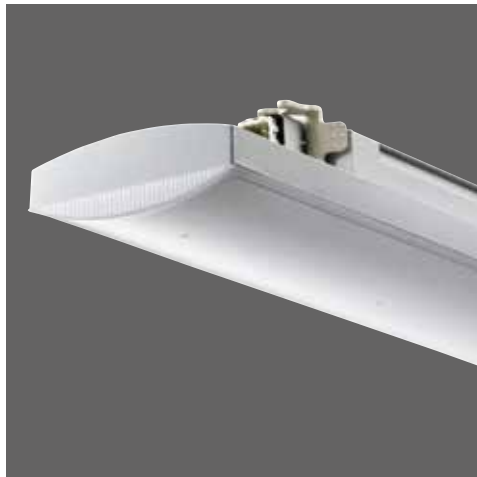




Table of Contents

DomoticsPowerBuilding.pdf - page1348	3
DomoticsPowerBuilding.pdf - page1349	4
DomoticsPowerBuilding.pdf - page1351	5
DomoticsPowerBuilding.pdf - page1352	6
DomoticsPowerBuilding.pdf - page1353	7
DomoticsPowerBuilding.pdf - page1354	8
DomoticsPowerBuilding.pdf - page1355	9
DomoticsPowerBuilding.pdf - page1356	10
DomoticsPowerBuilding.pdf - page1357	11
DomoticsPowerBuilding.pdf - page1358	12
DomoticsPowerBuilding.pdf - page1359	13
DomoticsPowerBuilding.pdf - page1365	14
DomoticsPowerBuilding.pdf - page1366	15
DomoticsPowerBuilding.pdf - page1367	16
DomoticsPowerBuilding.pdf - page1369	17
DomoticsPowerBuilding.pdf - page1370	18
DomoticsPowerBuilding.pdf - page1371	19
DomoticsPowerBuilding.pdf - page1373	20
DomoticsPowerBuilding.pdf - page1374	21
DomoticsPowerBuilding.pdf - page1375	22
DomoticsPowerBuilding.pdf - page1376	23
DomoticsPowerBuilding.pdf - page1377	24
DomoticsPowerBuilding.pdf - page1378	25

GW FIT

Accessories for electrical installations

Complete system comprising cable glands, plastic and metal fixings, couplings for rigid conduits and sheaths, cable ties for external and junction and connection terminal blocks. The depth of the range and breadth of the offers of each family makes GEWISS the specialist and ideal partner when implementing any type of system, from residential to commercial and industrial sector.



Technical characteristics page 1378

PLASTIC CABLE GLANDS AND ACCESSORIES

CABLE GLANDS



**GWT
650°C**



GW 52 001

NYLON CABLE GLANDS - PG PITCH - GREY RAL 7035 - IP66

Code	PG pitch	Mounting hole Ø (mm)	For cables Ø (mm)	Pack Carton
GW 52 001	7	12.5	from 3 to 6	50/900
GW 52 002	9	16	from 6 to 8	50/600
GW 52 003	11	19	from 8 to 10.5	25/500
GW 52 004	13.5	20	from 9 to 12.5	25/500
GW 52 005	16	23	from 13 to 16	25/375
GW 52 006	21	29	from 9 to 10/from 17 to 20	25/400
GW 52 007	29	37	from 13.5 to 15/from 21 to 26	25/250
GW 52 008	36	48	from 17 to 20/from 30 to 34	10/130
GW 52 009	42	54	from 36 to 39/from 40 to 43	6/120
GW 52 010	48	60	from 38 to 40/from 46 to 50	5/100

ACCESSORIES SUPPLIED: fixing nut.

APPLICATIONS: for making watertight installations with direct grip on cable.



GW 52 075

NYLON CABLE GLANDS - PG PITCH - GREY RAL 7035 - IP68

Code	PG pitch	Mounting hole Ø (mm)	For cables Ø (mm)	Pack Carton
GW 52 071	7	12.5	from 3.5 to 6.5	50/600
GW 52 072	9	16	from 4 to 8	50/400
GW 52 073	11	19	from 5 to 10	50/600
GW 52 074	13.5	20	from 6 to 12	25/300
GW 52 075	16	23	from 10 to 14	25/300
GW 52 076	21	29	from 13 to 18	25/200
GW 52 077	29	37	from 18 to 25	25/150
GW 52 078	36	48	from 22 to 32	10/120
GW 52 079	42	54	from 30 to 38	6/84
GW 52 080	48	60	from 34 to 44	5/60

ACCESSORIES SUPPLIED: fixing nut.



GW 52 042

NYLON CABLE GLANDS - METRIC PITCH - GREY RAL 7035 - IP68

Code	ISO pitch	Mounting hole Ø (mm)	For cables Ø (mm)	Pack Carton
GW 52 042	12x1.25	12	from 3 to 6.5	50/600
GW 52 043	16x1.5	16	from 5 to 10	50/400
GW 52 044	20x1.5	20	from 10 to 14	25/300
GW 52 045	25x1.5	25	from 13 to 18	25/200
GW 52 046	32x1.5	32	from 18 to 25	25/150
GW 52 047	40x1.5	40	from 22 to 32	10/120
GW 52 048	50x1.5	50	from 30 to 38	6/84
GW 52 049	63x1.5	63	from 35 to 44	5/60

ACCESSORIES SUPPLIED: fixing nut.

APPLICATIONS: direct installation on fixing enclosures or components in feedthrough holes.

Coupling in installations where a high protection rating is required in the presence of chemical substances, shocks and vibrations.



GW 52 025

NYLON CABLE GLANDS - PG PITCH WITH HOUSING FOR RIGID CONDUIT - GREY RAL 7035 - IP66

Code	PG pitch	Mounting hole Ø (mm)	For external conduits (mm)	For cables Ø (mm)	Pack Carton
GW 52 024	13.5	20	16	from 9 to 12.5	15/300
GW 52 025	16	23	20	from 13 to 16	15/240
GW 52 026	21	29	25	from 9 to 10/from 17 to 20	15/240
GW 52 027	29	37	32	from 13.5 to 15/from 21 to 26	15/135
GW 52 028	36	48	40	from 17 to 20/from 30 to 34	6/54
GW 52 029	42	54	50	from 36 to 39/from 40 to 43	4/80

ACCESSORIES SUPPLIED: fixing nut.

APPLICATIONS: for making watertight installations with direct clamping on the cable and attractive conduit-box coupling.



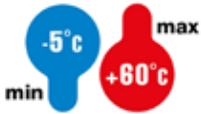
GW 52 081

NYLON CABLE GLANDS - PG PITCH - GREY RAL 7035 - IP54

Code	PG pitch	Mounting hole Ø (mm)	For cables Ø (mm)	Pack Carton
GW 52 081	7	12.5	from 4 to 6	100/1000
GW 52 082	9	16	from 4.5 to 7	100/800
GW 52 083	11	19	from 6 to 9	100/800
GW 52 084	13.5	20	from 9 to 12	100/500
GW 52 085	16	23	from 11 to 14	100/500
GW 52 086	21	29	from 14 to 18	100/500
GW 52 087	29	37	from 18 to 25	50/250
GW 52 088	36	48	from 26 to 32	25/125

COUPLINGS AND CABLE-GLANDS

INSTALLATION



GW 50 415

SHOCKPROOF POLYMER CONDUIT/BOX COUPLINGS GREY RAL 7035

**GWT
650°C**

Code	For external conduits (mm)	Mounting hole Ø (mm)	IP with rigid conduit	IP with corrugated conduit	Pack Carton
GW 50 415	16	20	IP66	IP54	25/200
GW 50 416	20	23	IP66	IP54	25/200
GW 50 417	25	29	IP66	IP54	25/150
GW 50 418	32	37	IP66	IP54	10/100
GW 50 419	40	48	IP66	IP44	6/60
GW 50 420	50	54	IP66	IP44	5/50

CHARACTERISTICS: the box conduit coupling device allows corrugated conduits to be connected to the junction boxes, guaranteeing the minimum IP4X degree of protection in areas at greater risk in the event of a fire whenever required.

ACCESSORIES SUPPLIED: fixing nut.



GW 50 421

FLEXIBLE POLYMER CONDUIT/BOX COUPLINGS GREY RAL 7035 - IP44

**GWT
650°C**

Code	For external conduits (mm)	Mounting hole Ø (mm)	Pack Carton
GW 50 421	16	23	50/700
GW 50 422	20	23	50/700
GW 50 423	20	29	25/350
GW 50 424	25	29	25/350
GW 50 425	32	37	15/210
GW 50 426	40	37	10/160
GW 50 427	50	48	10/90



GW 50 430

FLEXIBLE POLYMER CABLE GLAND - GREY RAL 7035 - IP55

**GWT
960°C**

Code	For ext. conduits max (mm)	Mounting hole Ø (mm)	Pack Carton
GW 50 428	16	19	100/1000
GW 50 429	20	23	100/1000
GW 50 430	25	29	100/1000
GW 50 431	32	37	50/500
GW 50 432	40	48	35/350

NOTE: quick entry cable glands, except GW50428.

CHARACTERISTICS: quick entry cable glands, suitable for cables with Ø from 4 to 14mm.

Cable gland GW50429, suitable for conduits ø 16, 20mm.

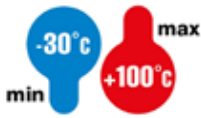
Cable gland GW50430, suitable for conduits ø 16, 20, 25mm.

Cable gland GW50431, suitable for conduits ø 16, 20, 25, 32mm.

Cable gland GW50432, suitable for conduits ø 16, 20, 25, 32, 40mm.

METAL CABLE GLANDS AND ACCESSORIES

INSTALLATION



CABLE GLANDS



GW 76 845

NICKEL-PLATED BRASS CABLE GLANDS - IP65

Code	Type of pitch	Seals Ø (mm)	Pack Carton
GW 76 841	PG11	7.5 / 10 / 12.5	1/50
GW 76 842	PG13.5	7.5 / 10 / 12.5	1/50
GW 76 843	PG16	7.5 / 10 / 12.5	1/50
GW 76 844	PG21	10 / 13 / 16 / 19	1/50
GW 76 845	PG29	18 / 21 / 24 / 27	1/10
GW 76 846	PG36	24 / 27 / 30 / 33	1/10
GW 76 847	PG42	30 / 33 / 36 / 39	1/10
GW 76 848	M20	4 / 7 / 10 / 13	1/50
GW 76 849	M25	8.5 / 11.5 / 14.5 / 17.5	1/50
GW 76 850	M32	16 / 19 / 22 / 25	1/10
GW 76 851	M40	23 / 26 / 29 / 32	1/10
GW 76 852	M50	30 / 33 / 36 / 39	1/10

CHARACTERISTICS: nickel-plated brass cable gland with complete sealing gaskets for a wide range of cable diameters.



GW 76 829

NICKEL-PLATED BRASS CABLE GLANDS - IP68

Code	Type of pitch	For cables Ø (mm)	Pack Carton
GW 76 825	PG11	from 4 to 9	10/100
GW 76 826	PG13.5	from 7 to 11	10/100
GW 76 827	PG16	from 10 to 13	10/100
GW 76 828	PG21	from 12 to 17	5/50
GW 76 829	PG29	from 17 to 24	5/50
GW 76 830	PG36	from 20 to 26 / from 27 to 34	5/50
GW 76 897	PG42	from 32 to 36	2/10
GW 76 894	M12	from 3 to 6.5	50/250
GW 76 896	M16	from 4 to 9	10/100
GW 76 831	M20	from 10 to 13	10/100
GW 76 832	M25	from 12 to 17	10/100
GW 76 833	M32	from 14 to 21	5/50
GW 76 834	M40	from 19 to 27	5/50
GW 76 835	M50	from 25 to 34	2/10
GW 76 895	M63	from 34 to 48	5/40

CHARACTERISTICS: nickel-plated brass cable gland with mechanic cable-snap device.

NOTE: fixing nuts not supplied.

EXTENSIONS



GW 76 867

NICKEL-PLATED BRASS EXTENSIONS - IP65

Code	Male thread	Female thread	Pack Carton
GW 76 865	PG11	PG13.5	10/100
GW 76 866	PG13.5	PG16	10/100
GW 76 867	PG16	PG21	10/100
GW 76 868	PG21	PG29	5/50
GW 76 869	PG29	PG36	5/50
GW 76 870	M20	M25	10/100
GW 76 871	M25	M32	10/100
GW 76 872	M32	M40	5/50
GW 76 873	M40	M50	5/50

NOTE: IP degree of protection: depends on the other components with which they are coupled.

CLOSURE CAPS


GW 76 979

NICKEL-PLATED BRASS CLOSURE CAPS - IP65

Code	Type of pitch	Pack Carton
GW 76 980	PG11	10/100
GW 76 981	PG13.5	10/100
GW 76 982	PG16	10/100
GW 76 983	PG21	10/100
GW 76 984	PG29	5/50
GW 76 985	PG36	5/50
GW 76 986	PG42	5/50
GW 76 972	M12	100/400
GW 76 973	M16	100/300
GW 76 975	M20	10/100
GW 76 976	M25	10/100
GW 76 977	M32	10/100
GW 76 978	M40	5/50
GW 76 979	M50	5/50
GW 76 974	M63	10/100

ACCESSORIES SUPPLIED: sealing gasket.

FIXING NUTS

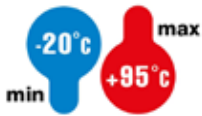

GW 76 959

NICKEL-PLATED BRASS FIXING NUTS

Code	Type of pitch	Pack Carton
GW 76 957	PG11	25/100
GW 76 958	PG13.5	25/100
GW 76 959	PG16	25/100
GW 76 960	PG21	25/100
GW 76 961	PG29	25/100
GW 76 962	PG36	10/50
GW 76 963	PG42	10/50
GW 76 966	M12	100/500
GW 76 951	M16	25/100
GW 76 952	M20	25/100
GW 76 953	M25	25/100
GW 76 954	M32	25/100
GW 76 955	M40	10/50
GW 76 956	M50	10/50
GW 76 967	M63	25/125

METAL CABLE GLANDS AND ACCESSORIES FOR ATEX ENVIRONMENTS - ZONE 1(G) - ZONE 20(D)

INSTALLATION



METAL CABLE GLANDS



GW 76 901

ATEX CABLE GLANDS IN NICKEL-PLATED BRASS WITH PG-PITCH AND LONG THREAD - IP68

Code	Type of pitch	Mounting hole Ø (mm)	For cables Ø (mm)	Pack Carton
GW 76 901	PG7	12.5	from 3 to 6.5	10/100
GW 76 902	PG9	16	from 4 to 8	10/100
GW 76 903	PG11	19	from 5 to 10	10/100
GW 76 904	PG13.5	20	from 6.5 to 12	10/100
GW 76 905	PG16	23	from 7 to 12	10/100
GW 76 906	PG21	29	from 13 to 18	5/50
GW 76 907	PG29	37	from 18 to 25	5/50
GW 76 908	PG36	48	from 22 to 32	5/50
GW 76 909	PG42	54	from 32 to 38	2/10
GW 76 910	PG48	60	from 37 to 44	2/10

NOTE: fixing nuts not supplied.

ATEX Classification. Equipment-group II Category 2G 1D.

Type of protection for use in explosive gas atmospheres: e.

Type of protection for use in explosive dust atmospheres: ta.

Ambient temperature range: -60°C 6It;= Ta 6It;= +95°C.



GW 76 921

ATEX CABLE GLANDS IN NICKEL-PLATED BRASS WITH METRIC PITCH AND LONG THREAD - IP68

Code	Type of pitch	Mounting hole Ø (mm)	For cables Ø (mm)	Pack Carton
GW 76 921	M12	12	from 3 to 6.5	10/100
GW 76 922	M16	16	from 6 to 10	10/100
GW 76 923	M20	20	from 10 to 14	10/100
GW 76 924	M25	25	from 14 to 18	10/100
GW 76 925	M32	32	from 20 to 25	5/50
GW 76 926	M40	40	from 22 to 32	5/50
GW 76 927	M50	50	from 32 to 38	2/10
GW 76 928	M63	63	from 37 to 44	2/10

NOTE: fixing nuts not supplied.

ATEX Classification. Equipment-group II Category 2G 1D.

Type of protection for use in explosive gas atmospheres: e.

Type of protection for use in explosive dust atmospheres: ta.

Ambient temperature range: -60°C 6It;= Ta 6It;= +95°C.

FIXING NUTS



GW 76 941

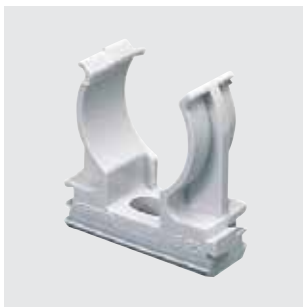
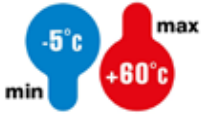
NICKEL-PLATED BRASS FIXING NUTS

Code	Type of pitch	Pack Carton
GW 76 941	PG7	25/100
GW 76 942	PG9	25/100
GW 76 957	PG11	25/100
GW 76 958	PG13.5	25/100
GW 76 959	PG16	25/100
GW 76 960	PG21	25/100
GW 76 961	PG29	25/100
GW 76 962	PG36	10/50
GW 76 963	PG42	10/50
GW 76 943	PG48	10/50
GW 76 949	M12	25/100
GW 76 951	M16	25/100
GW 76 952	M20	25/100
GW 76 953	M25	25/100
GW 76 954	M32	25/100
GW 76 955	M40	10/50
GW 76 956	M50	10/50
GW 76 950	M63	10/50

PLASTIC FIXINGS FOR CONDUITS AND CABLES

FIXINGS FOR CONDUITS

INSTALLATION



GW 50 603

SHOCKPROOF POLYMER SADDLE SNAP CLIP - GREY RAL 7035



Code	For external conduits (mm)	Wall-conduit axis distance (mm)	Pack Carton
GW 50 601	16	20	100/1800
GW 50 602	20	22	100/1600
GW 50 603	25	24.5	100/900
GW 50 604	32	28	100/900
GW 50 628	40	32	50/450
GW 50 629	50	37	50/450

NOTES: suitable for riveting machines.
 GW50628 and GW50629 not Halogen Free.
APPLICATIONS: recommended for surface mounting



GW 50 605

SHOCKPROOF POLYMER SADDLE COLLAR CLIP - GREY RAL 7035



Code	For external conduits (mm)	Wall-conduit axis distance (mm)	Pack Carton
GW 50 605	16	20	100/900
GW 50 606	20	22	100/900
GW 50 607	25	24.5	100/600
GW 50 608	32	28	50/450
GW 50 630	40	32	35/350
GW 50 631	50	37	25/200

APPLICATIONS: Recommended for ceiling applications.



GW 50 609

MODULAR LOCK-JOINT RAIL TO FIX SHOCKPROOF POLYMER SUPPORTS - GREY RAL 7035

Code	Length (mm)	Pack Carton
GW 50 609	200	50/350



GW 50 651

MULTI-DIAMETER CLAMP SUPPORTS - GREY RAL 7035

Code	For external conduits (mm)	Wall-conduit axis distance (mm)	Pack Carton
GW 50 651	16-20	14-16	75/900
GW 50 652	25-32	21.5-25	25/250
GW 50 653	40-50	30-35	15/150



DX 51 120

FIXING COLLAR - GREY RAL 7035



Code	For external conduits (mm)	Description	Pack Carton
DX 51 120	16-20	Reopened collar	100/1500
DX 51 232	16-32	Collar cannot be reopened	100/800
DX 51 263	25-63	Collar cannot be reopened	100/400

USE: rigid conduits can be fixed to the wall with the aid of the wall plugs. Assembly hole Ø7mm.

MATERIAL: self-extinguishing polyamide.

NOTE: for an optimal collar closing use the tie tool.



DX 51 306

FIXING DOWELS FOR COLLAR - GREY RAL 7035

Code	For mounting holes Ø (mm)	Characteristics	Pack Carton
DX 51 306	6		200/600
DX 51 308	8		200/600

USE: allow fixing of rigid conduits fixing collars to walls.

FIXINGS FOR CABLES



GW 50 610

SHOCKPROOF POLYMER CLIPS WITH HARDENED STEEL PIN - GREY RAL 7035



Code	For external conduits (mm)	Pack Carton
Colour: Grey RAL 7035		
GW 50 610	3-4	100/8000
GW 50 611	5-6	100/8000
GW 50 612	7-8	100/8000
GW 50 613	9-10	100/6000
GW 50 614	11-12	100/6000
GW 50 615	13-14	100/6000
GW 50 616	15-16	100/3000
GW 50 617	19-20	100/1800
GW 50 618	21-22	100/2000
GW 50 619	25-26	50/900
GW 50 620	31-32	50/1000
Colour: White		
GW 50 621	5-6	100/8000
GW 50 622	7-8	100/8000



GW 50 623

FLAT SHOCKPROOF POLYMER CLIPS WITH PIN OF HARDENED STEEL - WHITE

Code	Colour	For flat cables width	Pack Carton
GW 50 623	White	5-6 mm	100/4000
GW 50 624	White	7-8 mm	100/15000
GW 50 625	White	10-11 mm	100/4800



GW 50 626

HARDENED STEEL PINS

Code	Description	Pack Carton
GW 50 626	Totally insulated	100/1000
GW 50 627	With insulating collar	100/1000

NOTE: Each package contains 100 small nails.

METAL COLLARS FOR CONDUITS AND CABLES

COLLARS IN GALVANIZED STEEL



GW 50 801

GALVANISED STEEL COLLARS M6 THREAD WITH 2 SCREWS

Code	For external conduits (mm)	Pack Carton
GW 50 801	10-11	100/1600
GW 50 802	12-13	100/800
GW 50 803	14-15	100/800
GW 50 804	16-17	100/800
GW 50 805	19-20	100/800
GW 50 806	21-22	100/600
GW 50 807	25-26	100/600
GW 50 808	31-32	100/600
GW 50 809	38-40	100/300
GW 50 810	48-50	50/300

CLIPS IN GALVANIZED STEEL



GW 50 811

GALVANISED STEEL CLIPS HOLE 12X6 MM

Code	For external conduits (mm)	Pack Carton
GW 50 811	10-11	100/2400
GW 50 812	12-13	100/2000
GW 50 813	14-15	100/2000
GW 50 814	16-17	100/1600
GW 50 815	19-20	100/1000
GW 50 816	21-22	50/1000
GW 50 817	25-26	50/1000
GW 50 818	31-32	50/600
GW 50 819	38-40	50/600
GW 50 820	48-50	50/300



GW 50 821

GALVANISED STEEL U-BOLTS WITH TWO HOLES

Code	For external conduits (mm)	Pack Carton
Hole dimension (mm): 7x4		
GW 50 821	10-11	100/2400
GW 50 822	12-13	100/3500
GW 50 823	14-15	100/2000
GW 50 824	16-17	100/1600
GW 50 825	19-20	100/2000
GW 50 826	21-22	50/1000
GW 50 827	25-26	50/800
Hole dimension (mm): 10x6		
GW 50 828	31-32	50/600
GW 50 829	38-40	50/600
GW 50 830	48-50	50/300

STRAPS FOR CORRUGATED CONDUITS

FIXING STRAPS



GW 50 791

STRAPS FOR POSITIONING THE CONDUITS ON THE FLOOR

Code	Description	Roll length (m)	Ribbon height (mm)	Pack Carton
GW 50 791	Strap in perforated, galvanized steel	10	12	1/10
GW 50 792	Strap in fabric	10	15	10/100



GW 50 798

KIT FOR MANUAL RIVETING

Code	Description	Pack Carton
GW 50 798	Firing pin	1/10
GW 50 799	Steel pin - 18mm	200/4000

DISPENSER FOR ACCESSORIES

DISPENSER CASE FOR ELECTRICAL INSTALLATION ACCESSORIES



GW 52 420

MULTI-COMPARTMENT DISPENSER CASE WITH SNAP-ON SECURITY CLOSURE

Code	Accessories supplied	Dimensions LxHxD (mm)	Pack Carton
GW 52 420	Upper compartment and 4 extractable compartments	420x400x320 mm	1

TOOLS FOR PERFORATING ENCLOSURES

DRILL MILLING CUTTER



GW 52 401

MULTI-DIAMETER DRILL MILLING CUTTER IN HSS STEEL TO DRILL BOXES, BOARDS AND TRUNKING IN INSULATING MATERIAL

Code	Description	Ø of perforation	Pack Carton
GW 52 401	Drill milling cutter	From 3.5 to 40	1/4

COUPLING DEVICES FOR SPIRAL SHEATH

ROTATING UNIONS



DX 54 020

STRAIGHT, REVOLVING COUPLING DEVICE - METRIC PITCH - IP54

Code	Sheath Ø (mm)	ISO pitch	Pack Carton
Colour: Grey RAL 7035			
DX 54 008	8	M 12x1.5	20/180
DX 54 010	10	M 16x1.5	20/160
DX 54 012	12	M 16x1.5	10/100
DX 54 016	16	M 20x1.5	10/150
DX 54 020	20	M 25x1.5	10/100
DX 54 022	22	M 25x1.5	10/100
DX 54 025	25	M 32x1.5	5/60
DX 54 028	28	M 32x1.5	5/40
DX 54 032	32	M 40x1.5	5/30
DX 54 040	40	M 50x1.5	25
DX 54 050	50	M 63x1.5	15
Colour: Black RAL 9005			
DX 54 108	8	M 12x1.5	20/180
DX 54 110	10	M 16x1.5	20/160
DX 54 112	12	M 16x1.5	10/100
DX 54 116	16	M 20x1.5	10/150
DX 54 120	20	M 25x1.5	10/100
DX 54 122	22	M 25x1.5	10/100
DX 54 125	25	M 32x1.5	5/60
DX 54 128	28	M 32x1.5	5/40
DX 54 132	32	M 40x1.5	5/30
DX 54 140	40	M 50x1.5	25
DX 54 150	50	M 63x1.5	15

USE: for the coupling of spiral sheaths to junction boxes in threaded holes with metric pitch or in non-threaded holes via the nut and gasket supplied.



DX 54 220

STRAIGHT, REVOLVING COUPLING DEVICE - GAS PITCH - IP54

Code	Sheath Ø (mm)	GAS pitch	Pack Carton
Colour: Grey RAL 7035			
DX 54 208	8	1/4"	20/180
DX 54 210	10	1/4"	20/160
DX 54 212	12	3/8"	10/100
DX 54 214	14	1/2"	10/150
DX 54 216	16	1/2"	10/150
DX 54 220	20	3/4"	10/100
DX 54 222	22	3/4"	10/100
DX 54 225	25	1"	5/60
DX 54 228	28	1"	5/40
DX 54 232	32	1 1/4"	5/30
DX 54 235	35	1 1/4"	5/30
DX 54 240	40	1 1/2"	25
DX 54 250	50	2"	15
Colour: Black RAL 9005			
DX 54 308	8	1/4"	20/180
DX 54 310	10	1/4"	20/160
DX 54 312	12	3/8"	10/100
DX 54 314	14	1/2"	10/150
DX 54 316	16	1/2"	10/150
DX 54 320	20	3/4"	10/100
DX 54 322	22	3/4"	10/100
DX 54 325	25	1"	5/60
DX 54 328	28	1"	5/40
DX 54 332	32	1 1/4"	5/30
DX 54 335	35	1 1/4"	5/30
DX 54 340	40	1 1/2"	25
DX 54 350	50	2"	15

USE: for the coupling of spiral sheaths to junction boxes in threaded holes with GAS pitches or in non-threaded holes via the nut and gasket supplied.



DX 54 420

STRAIGHT, REVOLVING COUPLING DEVICE - PG PITCH - IP54

Code	Sheath Ø (mm)	PG pitch	Pack Carton
Colour: Grey RAL 7035			
DX 54 408	8	7	20/180
DX 54 410	10	7	20/160
DX 54 411	10	9	20/160
DX 54 412	12	11	10/100
DX 54 413	12	13.5	10/100
DX 54 414	14	13.5	10/150
DX 54 416	16	13.5	10/150
DX 54 417	16	16	10/150
DX 54 420	20	21	10/100
DX 54 422	22	21	10/100
DX 54 425	25	29	5/60
DX 54 428	28	29	5/40
DX 54 432	32	36	5/30
DX 54 435	35	36	5/30
Colour: Black RAL 9005			
DX 54 508	8	7	20/180
DX 54 510	10	7	20/160
DX 54 511	10	9	20/160
DX 54 512	12	11	10/100
DX 54 513	12	13.5	10/100
DX 54 514	14	13.5	10/150
DX 54 516	16	13.5	10/150
DX 54 517	16	16	10/150
DX 54 520	20	21	10/100
DX 54 522	22	21	10/100
DX 54 525	25	29	5/60
DX 54 528	28	29	5/40
DX 54 532	32	36	5/30
DX 54 535	35	36	5/30

USE: for the coupling of spiral sheaths to junction boxes in threaded holes with Pg pitches or in non-threaded holes via the nut and gasket supplied.

FIXED UNIONS



DX 56 008

STRAIGHT, FIXED COUPLING DEVICE - METRIC PITCH - IP54

Code	Sheath Ø (mm)	ISO pitch	Pack Carton
Colour: Grey RAL 7035			
DX 56 008	8	M12x1	20/160
DX 56 010	10	M16x1.5	10/170
DX 56 012	12	M16x1.5	10/150
DX 56 014	14	M16x1.5	10/130
DX 56 016	16	M20x1.5	10/110
DX 56 022	20-22	M25x1.5	10/50
DX 56 025	25	M25x1.5	10/50
DX 56 028	28	M32x1.5	10/40
DX 56 040	40	M40x1.5	15
DX 56 050	50	M50x1.5	12

USE: for the coupling of spiral sheaths to junction boxes in threaded holes with metric pitch or in non-threaded holes via the nut and gasket supplied.



DX 56 208

STRAIGHT, FIXED COUPLING DEVICE - GAS PITCH - IP54

Code	Sheath Ø (mm)	GAS pitch	Pack Carton
Colour: Grey RAL 7035			
DX 56 208	8	1/4"	20/160
DX 56 210	10	1/4"	10/170
DX 56 212	12	3/8"	10/150
DX 56 214	14	1/2"	10/130
DX 56 216	16	1/2"	10/110
DX 56 222	20-22	3/4"	10/50
DX 56 225	25	3/4"	10/50
DX 56 228	28	1"	10/40
DX 56 232	32	1 1/4"	3/18
DX 56 235	35	1 1/4"	3/18
DX 56 240	40	1 1/2"	15
DX 56 250	50	2"	12

USE: for the coupling of spiral sheaths to junction boxes in threaded holes with GAS pitches or in non-threaded holes via the nut and gasket supplied.



DX 56 408

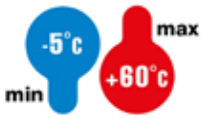
STRAIGHT, FIXED COUPLING DEVICE - PG PITCH - IP54

Code	Sheath Ø (mm)	PG pitch	Pack Carton
Colour: Grey RAL 7035			
DX 56 408	8	7	20/160
DX 56 410	10	7	10/170
DX 56 411	12	9	10/150
DX 56 412	12	11	10/150
DX 56 413	12	13.5	10/150
DX 56 414	14	13.5	10/130
DX 56 415	16	11	10/110
DX 56 416	16	13.5	10/110
DX 56 417	16	16	10/110
DX 56 422	20-22	16	10/50
DX 56 423	20-22	21	10/50
DX 56 425	25	21	10/50
DX 56 428	28	29	10/40
DX 56 432	32	36	3/18
DX 56 435	35	36	3/18
DX 56 440	40	42	15
DX 56 450	50	48	12

USE: for the coupling of spiral sheaths to junction boxes in threaded holes with Pg pitches or in non-threaded holes via the nut and gasket supplied.

52 FS - CABLE TIES

INSTALLATION



**GWT
650°C**

STANDARD TYPE



GW 52 231

STANDARD CABLE TIES IN COLOURLESS POLYMER



Code	Dimensions LxH (mm)	Tensile stress (daN)	Terminal grip capacity Ø	Pack Carton
GW 52 231	2.4x75	8	1.5-18 mm	1000/20000
GW 52 232	2.5x96	8	1.5-23 mm	1000/20000
GW 52 233	2.5x140	8	1.5-35 mm	100/10000
GW 52 234	2.5x203	8	1.5-55 mm	100/10000
GW 52 235	3.6x150	18	2.5-39 mm	100/10000
GW 52 236	3.6x203	18	2.5-55 mm	100/10000
GW 52 237	3.6x292	18	2.5-85 mm	100/5000
GW 52 238	4.8x190	22	3-52 mm	100/5000
GW 52 239	4.8x280	22	3-81 mm	100/5000
GW 52 240	4.8x368	22	3-182 mm	100/5000
GW 52 241	7.6x380	55	4-110 mm	100/1000
GW 52 242	9.0x610	80	5-185 mm	50/500
GW 52 243	9.0x914	80	5-270 mm	50/500

daN = Decanewton (approx. 1kg).

CHARACTERISTICS: sloping tail and rounded edges. Values for resistance to tensile stress refer to T=20°C, in compliance with Standard EN 62275.

HEAVY-DUTY



GW 52 251

HEAVY DUTY WIRING TIES - BLACK POLYMER



Code	Dimensions LxH (mm)	Tensile stress (daN)	Terminal grip capacity Ø	Pack Carton
GW 52 251	2.4x75	8	1.5-18 mm	1000/20000
GW 52 252	2.5x96	8	1.5-23 mm	1000/20000
GW 52 253	2.5x140	8	1.5-35 mm	100/10000
GW 52 254	2.5x203	8	1.5-55 mm	100/10000
GW 52 255	3.6x150	18	2.5-39 mm	100/10000
GW 52 256	3.6x203	18	2.5-55 mm	100/10000
GW 52 257	3.6x292	18	2.5-85 mm	100/5000
GW 52 258	4.8x190	22	3-52 mm	100/5000
GW 52 259	4.8x280	22	3-81 mm	100/5000
GW 52 260	4.8x368	22	3-102 mm	100/5000
GW 52 261	7.6x380	55	4-110 mm	100/1000
GW 52 262	9.0x610	80	5-185 mm	50/500
GW 52 263	9.0x914	80	5-270 mm	50/500

daN = Decanewton (approx. 1kg).

CHARACTERISTICS: sloping tail and rounded edges. Values for resistance to tensile stress refer to T=20°C, in compliance with Standard EN 62275.

RE-OPENABLE



GW 52 271

RE-OPENABLE CABLE TIES IN BLACK POLYMER



Code	Dimensions LxH (mm)	Tensile stress (daN)	Terminal grip capacity Ø	Pack Carton
GW 52 271	7.6x150	22	4-35 mm	100/1000
GW 52 272	7.6x200	22	4-50 mm	100/1000
GW 52 273	7.6x300	22	4-80 mm	100/1000

daN = Decanewton (approx. 1kg).

CHARACTERISTICS: Values for resistance to tensile stress refer to T=20°C, in compliance with Standard EN 62275.

WITH EYELET



GW 52 281

CABLE TIES WITH EYELET IN COLOURLESS POLYMER



Code	Dimensions LxH (mm)	Hole dimensions (mm)	Tensile stress (daN)	Terminal grip capacity Ø	Pack Carton
GW 52 281	2.5x100	4.8	8	1.5-25 mm	100/5000
GW 52 282	4.2x205	4.8	22	2.5-60 mm	100/2000

daN = Decanewton (approx. 1kg).

CHARACTERISTICS: sloping tail and rounded edges. Values for resistance to tensile stress refer to T=20°C, in compliance with Standard EN 62275.

WITH PLATE



GW 52 291

CABLE TIES WITH IDENTIFICATION TAG IN COLOURLESS POLYMER

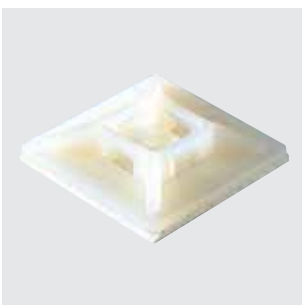


Code	Dimensions LxH (mm)	Tensile stress (daN)	Terminal grip capacity Ø	Label	Pack Carton
GW 52 291	2.5x100	8	5-25 mm	25 x 8 crossways	100/5000
GW 52 292	2.5x110	8	1.5-25 mm	25 x 8 double-sided	100/5000
GW 52 293	2.5x200	8	10-50 mm	30 x 15 crossways	100/2000
GW 52 294	4.6x200	22	10-50 mm	28 x 13 lengthways	100/2000

daN = Decanewton (approx. 1kg).

CHARACTERISTICS: sloping tail and rounded edges. Values for resistance to tensile stress refer to T=20°C, in compliance with Standard EN 62275.

COMPLEMENTARY ITEMS



GW 52 227

TWO-WAY SELF-ADHESIVE BASES IN COLOURLESS POLYMER TO SECURE CABLE TIES



Code	Description	Outer dim. LxHxD (mm)	Pack Carton
GW 52 226	For ties up to 4.5mm	19x3.9x19	100/3000
GW 52 227	For ties up to 5mm	28x4.0x28	100/3000

USE: use the self-adhesive clips for non heavy-duty applications only. In all other cases where it is necessary to guarantee the hold, use the special supports.

NOTES: to install the product correctly, fix the clip on a smooth, clean, dry surface, with a maximum distance of 10cm between the clips, and place on a horizontal surface with the self-adhesive part facing downwards.



GW 52 229

COLOURLESS POLYMER SADDLES TO SECURE CABLE TIES



Code	Description	Outer dim. LxHxD (mm)	Pack Carton
GW 52 228	For ties up to 5mm	15x7x10	100/3000
GW 52 229	For ties up to 9mm	23x9x16	100/3000

CHARACTERISTICS: screw fixing.



GW 52 410

TIE TOOL

Code	Suitable for	Pack Carton
GW 52 410	Cable ties	1/10

52 FS - OUTDOOR TIES



**GWT
650°C**

L.T.R. TIES



GW 52 201

OUTDOOR BLACK TIES IN L.T.R. POLYAMIDE 12



Code	Dimensions LxH (mm)	Number of heads	Tensile stress (daN)	Terminal grip capacity Ø	Pack Carton
GW 52 201	6x115	1	24.5	5-25 mm	100/4000
GW 52 202	6x180	1	24.5	9-45 mm	100/3000
GW 52 203	6x290	1	24.5	20-78 mm	100/1000
GW 52 204	9x180	1	36	10-40 mm	100/3000
GW 52 205	9x265	2	50	26-60 mm	100/1200
GW 52 206	9x360	2	50	26-93 mm	100/1000
GW 52 207	9x510	2	53	70-140 mm	100/500
GW 52 208	9x760	2	53	70-220 mm	100/500

daN = Decanewton (approx. 1kg).

L.T.R. (Low Temperature Resistance): high resistance to tensile stress at low temperatures.

CHARACTERISTICS: Values for resistance to tensile stress refer to T=20°C, in compliance with Standard EN 62275.

44 MS - TRAILING AND MODULAR TERMINAL BLOCKS

**GWT
850°C**



TRAILING TERMINALS BLOCKS



GW 44 665

MOBILE TERMINAL BLOCKS WITH MODULAR BUSBARS - 450V - T 85°C - TRANSPARENT - IP20

Code	Max. section flex. cables	Min. section flex. cables	No. poles per bar	Pack Carton
Type of screw: Slotted				
GW 44 661	2.5 mm ²	1 mm ²	10	10/450
GW 44 665	4 mm ²	1.5 mm ²	10	10/450
GW 44 662	6 mm ²	2.5 mm ²	10	10/450
GW 44 663	10 mm ²	4 mm ²	10	10/300
GW 44 664	16 mm ²	6 mm ²	5	10/240
Type of screw: Socket head 5mm				
GW 44 666	25 mm ²	10 mm ²	1	5/150
GW 44 667	35 mm ²	16 mm ²	1	5/150

CHARACTERISTICS: GW44666 and GW44667 supplied in single terminals.

MODULAR TERMINAL BLOCKS



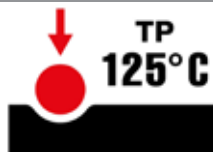
GW 44 601

POLYMER 12 POLE MODULAR TERMINAL BLOCKS WITH BRASS TERMINALS - 450V - T 85°C - BLACK

Code	Max. section flex. cables	Min. section flex. cables	hole Ø	Max load	Outer dim. LxHxD (mm)	Fixing	Pack Carton
GW 44 601	2.5 mm ²	0.75 mm ²	2.9 mm	24 A	95x15x16	With screw	10/480
GW 44 602	4 mm ²	1.5 mm ²	3.4 mm	32 A	117x17x20	With screw	10/240
GW 44 603	10 mm ²	4 mm ²	4.4 mm	57 A	141x20x23	With screw	10/160
GW 44 604	16 mm ²	6 mm ²	5.8 mm	76 A	172x25x32	With screw	10/120
GW 44 605	25 mm ²	10 mm ²	7.4 mm	101 A	210x34x38	With screw	3/36

44 MM - MULTI-POLE TERMINAL BLOCKS

**GWT
850°C**



PRESS-ON FIXING



GW 44 608

PRESS-ON MULTI-POLE TERMINAL BLOCKS - 450 V - GREY RAL 7035

Code	Connecting capacity	Pack Carton
GW 44 606	3 holes x 4 mm ²	10/100
GW 44 607	4 holes x 4 mm ²	10/100
GW 44 608	5 holes x 4 mm ²	10/100

NOTES: press-on fixing on 44 CE range boxes. (see "Selection Guide" synoptic table).

SCREW-ON FIXING



GW 44 610

SCREW-ON FEEDTHROUGH MULTI-POLE TERMINAL BLOCKS - 750V- T 85°C - GREY RAL 7035

Code	Connecting capacity	Pack Carton
GW 44 609	3 holes x 6 mm ²	10/100
GW 44 610	5 holes x 6 mm ²	10/100
GW 44 610 C	5 holes x 6 mm ²	10/100
GW 44 611	3 holes x 16 mm ²	10/100
GW 44 612	5 holes x 16 mm ²	10/100
GW 44 613	3 holes x 35 mm ²	1/10
GW 44 614	5 holes x 35 mm ²	1/10

APPLICATIONS: These allow the creation of cut-outs from the main cables which, unsheathed in the part concerned, are not interrupted.

ACCESSORIES SUPPLIED: fixing screws.

NOTE: Multi-pole terminal block GW44610C is certified CSA (according to UL1059). For use also with junction boxes GW44276C and GW44277C.

44 ME - UNIPOLAR EQUIPOTENTIAL TERMINAL BLOCKS

**GWT
850°C**



TERMINAL BLOCKS FOR SIDE-BY-SIDE ASSEMBLY



GW 44 706

TERMINAL BLOCKS WITH INDIRECT PLATE TIGHTENING - 450V - T 85°C - TRANSPARENT

Code	Connecting capacity	Pack Carton
GW 44 704	4 ways x 6 mm ²	10/100
GW 44 706	6 ways x 6 mm ²	10/100
GW 44 708	8 ways x 6 mm ²	10/100

APPLICATIONS: embedded fixing on the GW44720 support, for coupling with the DIN rail.

NOTES: for the connection capacity, refer to the technical catalogue

ACCESSORIES FOR TERMINAL BLOCKS FOR SIDE-BY-SIDE ASSEMBLY



GW 44 720

SUPPORT FOR FIXING SIDE-BY-SIDE TERMINAL BLOCKS ON DIN RAIL

Code	For equipotential terminal blocks	Terminal block fixing	Fixing on DIN rail	Pack Carton
GW 44 720	GW44704, GW44706, GW44708	Clip	Lock-joint	1/50

NOTES: ideal for applications on boxes of the 48 PT DIN range.

CHARACTERISTICS: supports a combination of terminal blocks with maximum 12-way capacity.

Possible combinations: 3xGW44704; 2xGW44706; 1xGW44704 + 1xGW44706; 1xGW44704 + 1xGW44708. Modular overall dimensions (width): 4.5 modules EN 50022.

MODULAR TERMINAL BLOCKS



GW 44 671

SINGLE-POLE EQUIPOTENTIAL TERMINAL BLOCKS WITH BLANKET GRIP - 450V - T 85°C - TRANSPARENT

Code	Connecting capacity	Pack Carton
GW 44 671	3 ways x 6 mm ²	10/100
GW 44 672	5 ways x 6 mm ²	10/100
GW 44 673	4 ways x 16 mm ²	10/50
GW 44 674	2 ways x 16mm ² + 3 ways x 6 mm ²	10/50
GW 44 675	2 ways x 16mm ² + 9 ways x 6 mm ²	5/25
GW 44 676	2 ways x 35 mm ² + 4 ways x 16 mm ²	1/10

APPLICATIONS: especially suitable for creating equipotential nodes.

ACCESSORIES SUPPLIED: self-adhesive label for identification of electrical lines.

NOTES: GW44676 equipped with feedthrough terminals. These allow the creation of cut-outs from the main cables which, unsheathed in the part concerned, are not interrupted.

ACCESSORIES FOR MODULAR TERMINAL BLOCKS



GW 44 681

SUPPORT FOR FIXING EQUIPOTENTIAL TERMINAL BLOCKS ON RAIL DIN

Code	For equipotential terminal blocks	Terminal block fixing	Pack Carton
GW 44 681	From GW44671 to GW44676	Clip	100

NOTE: not compatible with PT DIN and PT DIN GREEN WALL.



GW 44 682

ADAPTOR FOR FIXING EQUIPOTENTIAL TERMINAL BLOCKS

Code	For equipotential terminal blocks	Terminal block fixing	Pack Carton
GW 44 682	From GW44671 to GW44676	Lock-joint	200

APPLICATIONS: for fixing the equipotential terminal blocks on the plates or directly on the base inside the junction boxes and watertight boxes.

ACCESSORIES SUPPLIED: screws for fixing the adaptor.



GW 44 683

RAIL FOR FIXING EQUIPOTENTIAL TERMINAL BLOCKS IN PTC FLUSH-MOUNTING MODULAR BOXES

Code	Installable terminal blocks	Pack Carton
GW 44 683	4xGW44671; 3xGW44672; 2xGW44673; 2xGW44674; 1xGW44675	1/50

CHARACTERISTICS: width: 1 compartment. For applications with PTC boxes with 2 and 3 compartments, the rail is fixed on the dividers GW48024.

44 MP - MODULAR DISTRIBUTING FRAME TERMINAL BLOCKS

GWT
850°C



SINGLE-POLE



GW 44 651

SINGLE-POLE MODULAR DISTRIBUTION TERMINAL BLOCK - FIXING ON PLATE OR DIN RAIL - IP20

Code	Outer dim. LxHxD (mm)	No. of modules EN 50022	Input connecting capacity	Output connecting capacity	Icw (1s)	Pack Carton
Rated current (A): 160						
GW 44 651	35x92x49	2	1x(10-70) mm ²	6x(2.5-16) mm ²	10 kA	1/5

CHARACTERISTICS: terminal tightening torque: input cables 4 Nm, output cables 1.5 Nm.

APPLICATIONS: possibility to create 1, 2, 3 and 4-pole distributing frames.



GW 44 652

RIGID JUMPER KIT AND CAP FOR ONE-POLE TERMINAL BLOCK GW44651

Code	Description	Pack Carton
GW 44 652	Jumper kit	1/25

TWO-POLE



GW 44 691

TWO-POLE DISTRIBUTION TERMINAL BLOCKS WITH TRANSPARENT PROTECTION COVER FIXING ON PLATE OR DIN RAIL EN 50022 - 750V - T 85°C

Code	Outer dim. LxHxD (mm)	No. of modules EN 50022	Input connecting capacity	Output connecting capacity	Icw (1s)	Pack Carton
Rated current (A): 100						
GW 44 691	70x49x50	4	1x(6-35) mm ²	[1x(4-25) + 5x(1.5-10)] mm ²	6 kA	2/40
Rated current (A): 125						
GW 44 693	141x49x50	8	1x(6-35) mm ²	[2x(4-25) + 2x(4-16) + 10x(1.5-10)] mm ²	6 kA	1/12

CHARACTERISTICS: the indicated connection capacity is "per pole" and refers to the fitting of cables with "test prods".

NOTES: products bearing the IMQ quality mark.

FOUR-POLE



GW 44 696

**FOUR-POLE DISTRIBUTION TERMINAL BLOCKS WITH TRANSPARENT PROTECTION COVER
FIXING ON PLATE OR DIN RAIL EN 50022 - 750V - T 85°C**

Code	Outer dim. LxHxD (mm)	No. of modules EN 50022	Input connecting capacity	Output connecting capacity	Icw (1s)	Pack Carton
Rated current (A): 100						
GW 44 696	70x88.5x50	4	1x(6-35) mm ²	[1x(4-25) + 5x(1.5-10)] mm ²	6 kA	2/20
Rated current (A): 125						
GW 44 698	141x88.5x50	8	1x(6-35) mm ²	[2x(4-25) + 2x(4-16) + 10x(1.5-10)] mm ²	6 kA	1/10
Rated current (A): 160						
GW 44 699	185x75x135	10	1x(16-50) mm ²	[2x(10-35) + 2x(6-25) + 8x(4-16)] mm ²	10 kA	1/12

CHARACTERISTICS: terminal tightening torque: input cables 4 Nm, output cables 1.5 Nm.
the indicated connection capacity is "per pole" and refers to the fitting of cables with "test prods".
NOTES: products bearing the IMQ quality mark.

GW FIT



HIGH PERFORMANCE CABLE GLANDS



The selection of GEWISS cable glands provides plastic and metal versions with IP54, IP66 and IP68 degrees of protection, developed to suit any installation requirement in industrial applications and on the machine. Completing the offer, metal cable glands for ATEX environments.

AN EXTENSIVE CONDUIT AND CABLE FIXING SYSTEM



Available in plastic and metal and designed to meet every need: the range consists of snap-fit or collar conduit fixings accessories, also in multidiameter version and with a built-in wall plug version for faster installation.

TIES AND TERMINAL BLOCKS FOR EFFECTIVE WIRING



Range of ties which includes 6 different product lines: from the PA66 wiring versions to the L.T.R. versions for external applications in PA12. Range of terminal blocks in various types: movable terminal blocks, multi-pole, modular distribution and equipotential single-pole for DIN rails.

CABLE GLANDS

Cable glands and plastic accessories

TECHNICAL CHARACTERISTICS

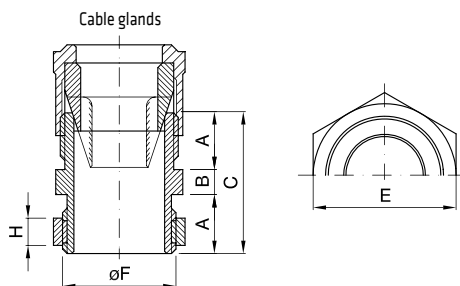
Regulatory Compliance:	Insulation resistance: >100MΩ a 500 V
Cable Glands: EN 50262; IEC 62444	Protection degree: IP44; IP55; IP66; IP68
Metric pitch: IEC/EN 60243	Rated voltage: 2000 V a 50 Hz
PG pitch: DIN 40430	Glow Wire Test: 650 °C cable glands
Couplings and cable glands: EN 61386-1 e EN 60670-1 as applicable	750 °C couplings and grommets
Temperature of installation: Min -25°C Max +65°C (cable glands and coupling conduit/box IP66)	
Min -5°C Max +60°C (grommets and coupling conduit/box IP55)	

BEHAVIOUR WITH CHEMICAL AND ATMOSPHERIC AGENTS

Agent	Saline solution	Acids		Bases		Solvents				Mineral oil	UV rays
		Concentrated	Diluted	Concentrated	Diluted	Hexane	Benzol	Acetone	Ethyl alcohol		
Cable glands	Resistant	Limited resistance	Limited resistance	Resistant	Resistant	Resistant	Resistant	Resistant	Resistant	Resistant	Limited resistance
Couplings and cable glands	Resistant	Limited resistance	Limited resistance	Resistant	Resistant	Resistant	Resistant	Resistant	Resistant	Resistant	Limited resistance

Dimension tables

PG PITCH CABLE GLANDS - IP66



Code	PG pitch	A	B	C	E	H	øF
GW 52 001	7	8	3	19	16	3.5	12.5
GW 52 002	9	9	3.5	21.5	19	4	15.2
GW 52 003	11	10.5	4	25	22	5	18.6
GW 52 004	13.5	12	4.5	28.5	24	5.5	20.4
GW 52 005	16	13	5	31	27	6	22.5
GW 52 006	21	14	6	34	32	6.5	28.3
GW 52 007	29	15	8	38	41	8	37
GW 52 008	36	18	9	45	55	9	47
GW 52 009	42	20	9	49	62	10	54
GW 52 010	48	22	9	53	66	14.5	59.3