



[WWW.GEWISS.COM](http://WWW.GEWISS.COM)

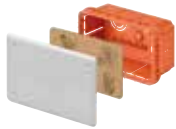
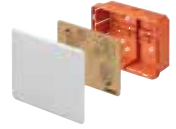





**GEWISS**





## Table of Contents

DomoticsPowerBuilding.pdf - page1246 .....	3
DomoticsPowerBuilding.pdf - page1247 .....	4
DomoticsPowerBuilding.pdf - page1248 .....	5
DomoticsPowerBuilding.pdf - page1249 .....	6
DomoticsPowerBuilding.pdf - page1250 .....	7
DomoticsPowerBuilding.pdf - page1251 .....	8
DomoticsPowerBuilding.pdf - page1252 .....	9
DomoticsPowerBuilding.pdf - page1253 .....	10
DomoticsPowerBuilding.pdf - page1254 .....	11
DomoticsPowerBuilding.pdf - page1255 .....	12
DomoticsPowerBuilding.pdf - page1256 .....	13
DomoticsPowerBuilding.pdf - page1257 .....	14
DomoticsPowerBuilding.pdf - page1258 .....	15
DomoticsPowerBuilding.pdf - page1259 .....	16
DomoticsPowerBuilding.pdf - page1260 .....	17
DomoticsPowerBuilding.pdf - page1261 .....	18

48 PT / PT DIN and 48 PTC: cardboard mortar guard element supplied			ACCESSORIES APPLICATION TABLE					
			Dimensions (mm)	Protective shield	No. of internal dividers	Coupling element	spare lids	
Plain	Deep							
RANGE	Code							
48 PT / PT DIN	GW 48 001		92x92x45	-	-	-	IP40 GW 48 013	-
	GW 48 002		118x96x50	-	-	-	IP40 GW 48 014	-
	GW 48 003		118x96x70	-	-	2 x GW 48 051	IP40 GW 48 014	-
	GW 48 004		152x98x70	-	-	2 x GW 48 051	IP40 GW 48 015	IP40 GW 48 084
	GW 48 005		160x130x70	-	-	2 x GW 48 051	IP40 GW 48 016	IP40 GW 48 085
	GW 48 006	 (DIN rail on the bottom)	196x152x70	1 X GW 48 006 P	1 x GW 48 012	2 x GW 48 051	IP40 GW 48 017	IP40 GW 48 086
	GW 48 007		294x152x70	1 X GW 48 007 P	2 x GW 48 012	2 x GW 48 051	IP40 GW 48 018	IP40 GW 48 087
	GW 48 008		392x152x70	1 X GW 48 008 P	3 x GW 48 012	2 x GW 48 051	IP40 GW 48 019	IP40 GW 48 088
	GW 48 009		480x160x70	1 X GW 48 009 P	2 x GW 48 012	2 x GW 48 051	IP40 GW 48 020	-
	GW 48 010		516x202x80	1 x GW 48 010 P	2 x GW 48 012	2 x GW 48 051	IP40 GW 48 021	-
	GW 48 011		516x294x80	1 x GW 48 011 P	5 supplied	2 x GW 48 051	IP40 GW 48 022	-
48 CM	GW 48 207		260x260x121	-	1 supplied	2 supplied	IP44 GW 48 247	IP44 GW 48 267
	GW 48 211		520x260x121	-	4 supplied	2 supplied	IP44 GW 48 251	IP44 GW 48 271
	GW 48 227		260x260x121	-	2 supplied	2 supplied	IP44 GW 48 247	IP44 GW 48 267
	GW 48 231		520x260x121	-	5 supplied	2 supplied	IP44 GW 48 251	IP44 GW 48 271
48 PTC - IP 40	GW 48 661		138x169x70	-	-	In-line coupling connector GW 48 026 	GW 48 611	-
	GW 48 662		308x169x70	-	1 x GW 48 024		GW 48 612	-
	GW 48 663		398x169x70	-	2 x GW 48 024		GW 48 613	-
48 PTC - IP 55	GW 48 671		138x169x70	-	-		GW 48 621	-
	GW 48 691		308x169x70	-	1 x GW 48 024	GW 48 651	-	
	GW 48 672		398x169x70	-	2 x GW 48 024	GW 48 622	-	
	GW 48 673		398x169x70	-	2 x GW 48 024	GW 48 623	-	



## Compatibility between GEWISS domotic devices and 48 PT DIN range boxes

The PT DIN boxes for domotics establish a new market standard in the world of domotic Home & Building Automation systems, as they allow you to distribute the domotic devices in the key points of the building; this widens the advantages of domotics, producing innovative solutions while optimising resources and reducing wiring.

The following table shows all the possible combinations - in terms of dimensions and dispersible power - of individual Gewiss domotic devices and individual PT DIN compartment.

To identify the best technical solution that takes into account dimensions and the dissipated power of the domotic modules and, consequently, to identify the best PT DIN for the chosen application devices the GW BUS software has been developed, to simplify the professional's work, quickly guiding him to design a domotic system with Gewiss material; at the end of the study, the relative certification is also issued.

GEWISS DOMOTIC DEVICES		48 PT DIN BOXES						
		Code	GW 48 006	GW 48 007	GW 48 008	GW 48 009	GW 48 010	GW 48 011
		Compartments	2	3	4	3	3	6
		No. of EN 50022 modules per compartment	4,5	5	5	8	9	4
No. mod. EN 50022	MAX pde (W)*	11	13	17	25	29	30	
KNX DEVICES FROM DIN RAIL	KNX line/field couplers	2	•	•	•	•	•	•
	KNX power supplies	4	•	•	•	•	•	•
	KNX motor control actuators	4	•	•	•	•	•	•
		8				•	•	
	KNX dimmer	4	•	•	•	•	•	•
	KNX general actuators	4	•	•	•	•	•	•
		8				•	•	
	DALI/KNX, DMX/KNX Gateway	6				•	•	
	KNX input modules	4	•	•	•	•	•	•
	Combined devices	4	•	•	•	•	•	•
	KNX BUS interfaces	1	•	•	•	•	•	•
KNX logic units	2,5	•	•	•	•	•	•	
DOMOTIC DEVICES FOR DOMESTIC RANGES	KNX domestic range actuators	3	•	•	•	•	•	•
	Relay	1,5 and 3	•	•	•	•	•	•



### GW BUS software for domotic projects

- Identification of the most suitable PT DIN
- Dispersible power check
- Issuing of relative certification

For further information, go to [www.gewiss.com](http://www.gewiss.com)  
or contact GEWISS Customer Service +39 035 94 61 11

# 48

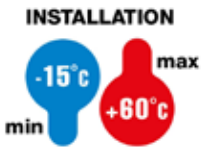
## Flush-mounting junction and modular range boxes

The system comprises three ranges: 48 PT / PT DIN range with integrated DIN rail on the back plate, in conformity with the CEI 23-48, ideal for the pre-arrangement and hosting of domotic modules; 48 CM range - High capacity connection and junction boxes, ideal for uprights 48 PTC range - modular, IP55 watertight, for junctions, command and distribution - ideal for indoor applications subject to sudden splashes of water. Entirely in halogen-free technopolymer.



**Technical characteristics page 1261**

### 48 PT / PT DIN - JUNCTION, CONNECTION AND DOMOTIC BOXES - IP40



**IK  
07**

**IP  
40**

**GWT  
650°C**



FOR BRICK WALLS



GW 48 004

#### 48 PT - JUNCTION AND CONNECTION BOXES FOR SIDE-BY-SIDE ASSEMBLY - WHITE LID RAL 9016



Code	Outer dim. LxHxD (mm)	Compartment pre-arrangement	Pack Carton
GW 48 001	92x92x45	1	162
GW 48 002	118x96x50	1	114
GW 48 003	118x96x70	1	84
GW 48 004	152x98x70	1	64
GW 48 005	160x130x70	1	49

**CHARACTERISTICS:** surface embossing of the lids to facilitate painting.

External knurling of the base to improve mortar adherence.

Pre-arrangement for combined coupling (both horizontal and vertical) via the joining element GW48051.

Lid protected with heat-shrinking film that also contains the bag of fixing screws.

Mortar guard element assembled by pressing on the base opening.

**ACCESSORIES SUPPLIED:** ø3x25 mm screw kit for lid fixing. mortar guard element in cardboard supplied as standard in the packs and packed with paper banding.

**NOTES:** for the inputs, remove the knockouts after cutting the relative tangs with scissors.



GW 48 006

#### 48 PT DIN - JUNCTION AND CONNECTION BOXES FOR SIDE-BY-SIDE ASSEMBLY WITH DIN RAIL INTEGRATED ON THE BACK-MOUNTING BOX COLOUR: WHITE LID RAL 9016



Code	Outer dim. LxHxD (mm)	Compartment pre-arrangement	No. EN 50022 mod. per comp.	Domotic equipment coupling	Dispersible max power (W)	No. supports GW44720	Pack Carton
GW 48 006	196x152x75	2	4.5	DIN rail	11	2	34
GW 48 007	294x152x75	3	5	DIN rail	13	3	22
GW 48 008	392x152x75	4	5	DIN rail	17	4	17
GW 48 009	480x160x75	3	8	DIN rail	25	5	17
GW 48 010	516x202x90	3	9	DIN rail	29	5	9
GW 48 011	516x294x90	6	4	DIN rail	30	5	5

**APPLICATIONS:** boxes with a built-in DIN rail on the back-mounting box, in accordance with regulations that require to fix by DIN rail the devices that disperse a certain amount of power inside the junction boxes (calculated in compliance with CEI 23-49), ideal for relocation of domotic equipment as actuators, power supplies, etc...

**CHARACTERISTICS:** surface embossing of the covers to facilitate painting. External knurling of the base to improve mortar adherence. Pre-arrangement for combined coupling (both horizontal and vertical) via the joining element GW48051. Lid protected with heat-shrinking film that also contains the bag of fixing screws. Mortar guard element assembled by pressing on the base opening.

**ACCESSORIES SUPPLIED:** Junction box GW48011 supplied with 5 internal separators. ø 3x25mm screw kit for lid fixing. Mortar guard element in cardboard supplied as standard in the packs and packed with paper banding.

**NOTES:** for the inputs, remove the knockouts after cutting the relative tangs with scissors.

## COMPLEMENTARY ITEMS FOR 48 PT / PT DIN E 48 PT DIN GREEN WALL

### COMPLEMENTARY ITEMS



GW 48 007 P

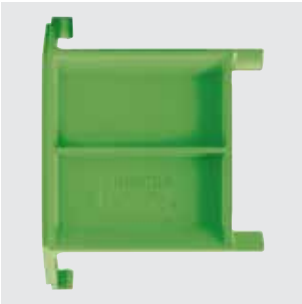
#### PROTECTIVE SHIELD FOR JUNCTION, CONNECTION AND DOMOTICS BOXES



Code	For boxes PT DIN	For PT DIN GREEN WALL boxes	Pack Carton
GW 48 006 P	GW48006	GW48006PM and GW48126PM	70
GW 48 007 P	GW48007	GW48007PM	60
GW 48 008 P	GW48008	GW48008PM	50
GW 48 009 P	GW48009	GW48009PM	40
GW 48 010 P	GW48010		30
GW 48 011 P	GW48011		25

**CHARACTERISTICS:** in technopolymer. Total protection during brick wall work, painting and finishing operations. Applying the protective shield beneath the lid, the dispersible power of the box is reduced by 2 W for GW48006, GW48007, GW48008, GW48010, GW48011, GW48006PM, GW48007PM, GW48008PM boxes and by 3W GW48009 and GW48009PM boxes.

**NOTES:** clip fixing to speed up assembly and removal operations. Reusable.



GW 48 051

#### JOINING ELEMENT FOR PT / PT DIN AND PT DIN GREEN WALL BOXES



Code	For PT / PT DIN boxes	For PT DIN GREEN WALL boxes	Pack Carton
GW 48 051	GW48003 - GW48011	GW48006PM - GW48009PM	10

**NOTES:** the use of the joining element makes it possible to create horizontal and/or vertical sets of boxes PT/PT DIN. For PT DIN GREEN WALL boxes, GW40425 element permits horizontal paths. GW48051 also for the box with transparent lid GW48126PM. CWT 850 °C according to EN 60695-2-11.



GW 48 012

#### INTERNAL SEPARATOR FOR PT DIN AND PT DIN GREEN WALL BOXES



Code	For boxes PT DIN	For PT DIN GREEN WALL boxes	Pack Carton
GW 48 012	GW48006 - GW48011	GW48006PM - GW48009PM	50/300



GW 48 018

**HIGH RESISTANCE SHOCKPROOF PLAIN LIDS FOR PT / PT DIN AND PT DIN GREEN WALL BOXES  
WHITE RAL 9016 - IP40**



Code	Suitable for	Shock resistance	Pack Carton
GW 48 013	GW48001	IK10	10/120
GW 48 014	GW48002 - GW48003	IK10	10/100
GW 48 015	GW48004	IK10	10/100
GW 48 016	GW48005	IK10	10/100
GW 48 017	GW48006 and GW48006PM	IK10	10/100
GW 48 018	GW48007 and GW48007PM	IK10	10/80
GW 48 019	GW48008 and GW48008PM	IK10	10/40
GW 48 020	GW48009 and GW48009PM	IK10	10/40
GW 48 021	GW48010	IK10	10/30
GW 48 022	GW48011	IK10	10/20

**CHARACTERISTICS:** surface embossing of the covers to facilitate painting. GWT 850 °C according to EN 60695-2-11.



GW 48 084

**DEEP LIDS FOR PT / PT DIN AND PT DIN GREEN WALL BOXES - WHITE RAL 9016 - IP40**



Code	Suitable for	Pack Carton
GW 48 084	GW48004	1/10
GW 48 085	GW48005	1/8
GW 48 086	GW48006 and GW48006PM	1/10
GW 48 087	GW48007 and GW48007PM	1/5
GW 48 088	GW48008 and GW48008PM	1/5

**CHARACTERISTICS:** the deep lids are ideal for passing from an exposed system to a chased one. They have a removable front plate and a frame for connecting with trunking. GWT 850 °C secondo EN 60695-2-11; max lid H = 66mm for boxes up to 392x152 and conduits with max Ø = 32mm.



GW 48 023

**LONG SELF-TAPPING SCREWS FOR SECURING COVER**

Code	Dimensions (mm)	Suitable for	Pack Carton
GW 48 023	Ø3x38	Junction boxes range 48 PT / PT DIN and PT DIN GREEN WALL	300/4200



## 44 ME - UNIPOLAR EQUIPOTENTIAL TERMINAL BLOCKS

GWT  
850°C

## TERMINAL BLOCKS FOR SIDE-BY-SIDE ASSEMBLY



GW 44 706

## TERMINAL BLOCKS WITH INDIRECT PLATE TIGHTENING - 450V - T 85°C - TRANSPARENT

Code	Connecting capacity	Pack Carton
GW 44 704	4 ways x 6 mm <sup>2</sup>	10/100
GW 44 706	6 ways x 6 mm <sup>2</sup>	10/100
GW 44 708	8 ways x 6 mm <sup>2</sup>	10/100

**APPLICATIONS:** embedded fixing on the GW44720 support, for coupling with the DIN rail.

**NOTES:** for the connection capacity, refer to the technical catalogue

## ACCESSORIES FOR TERMINAL BLOCKS FOR SIDE-BY-SIDE ASSEMBLY



GW 44 720

## SUPPORT FOR FIXING SIDE-BY-SIDE TERMINAL BLOCKS ON DIN RAIL

Code	For equipotential terminal blocks	Terminal block fixing	Fixing on DIN rail	Pack Carton
GW 44 720	GW44704, GW44706, GW44708	Clip	Lock-joint	1/50

**NOTES:** ideal for applications on boxes of the 48 PT DIN range.

**CHARACTERISTICS:** supports a combination of terminal blocks with maximum 12-way capacity.

Possible combinations: 3xGW44704; 2xGW44706; 1xGW44704 + 1xGW44706; 1xGW44704 + 1xGW44708; Modular overall dimensions (width): 4.5 modules EN 50022.

## MODULAR TERMINAL BLOCKS



GW 44 671

## TERMINAL BLOCKS WITH INDIRECT SCREW TIGHTENING - 450V - T 85°C - TRANSPARENT

Code	Connecting capacity	Pack Carton
GW 44 671	3 ways x 6 mm <sup>2</sup>	10/100
GW 44 672	5 ways x 6 mm <sup>2</sup>	10/100
GW 44 673	4 ways x 16 mm <sup>2</sup>	10/50
GW 44 674	2 ways x 16mm <sup>2</sup> + 3 ways x 6 mm <sup>2</sup>	10/50
GW 44 675	2 ways x 16mm <sup>2</sup> + 9 ways x 6 mm <sup>2</sup>	5/25
GW 44 676	2 ways x 35 mm <sup>2</sup> + 4 ways x 16 mm <sup>2</sup>	1/10

**APPLICATIONS:** especially suitable for creating equipotential nodes.

**ACCESSORIES SUPPLIED:** self-adhesive label for identification of electrical lines.

**NOTES:** GW44676 equipped with feedthrough terminals. These allow the creation of cut-outs from the main cables which, unsheathed in the part concerned, are not interrupted.

**ACCESSORIES FOR MODULAR TERMINAL BLOCKS**



GW 44 681

**SUPPORT FOR FIXING MODULAR TERMINAL BLOCKS ON DIN RAIL**

Code	For equipotential terminal blocks	Terminal block fixing	Pack Carton
GW 44 681	From GW44671 to GW44676	Clip	100



GW 44 682

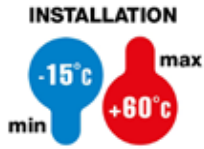
**ADAPTER FOR FIXING MODULAR TERMINAL BLOCKS**

Code	For equipotential terminal blocks	Terminal block fixing	Pack Carton
GW 44 682	From GW44671 to GW44676	Lock-joint	200

**APPLICATIONS:** for fixing the equipotential terminal blocks on the plates or directly on the base inside the junction boxes and watertight boxes.

**ACCESSORIES SUPPLIED:** screws for fixing the adapter.

## 48 CM - LARGE CAPACITY CONNECTION AND JUNCTION BOXES - IP40

IK  
07IP  
40GWT  
650°C

## PLAIN LID



GW 48 207

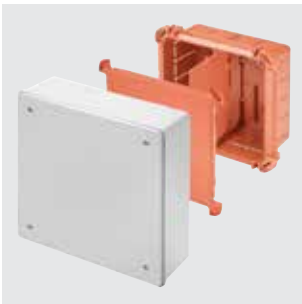
**JUNCTION AND CONNECTION BOXES FOR SIDE-BY-SIDE ASSEMBLY, FOR UPRIGHTS - PLAIN PLUMBABLE LID  
WHITE RAL 9016**

Code	Outer dim. LxHxD (mm)	Compartment pre-arrangement	Dispersible max power (W)	Pack Carton
GW 48 207	260x260x121	2	13	8
GW 48 211	520x260x121	5	30	6

**ACCESSORIES SUPPLIED:** internal dividers, joint elements for combined assembly, self-adhesive symbol labels for circuit identification, and sealing screws.  
Mortar-proof paint protection shield in technopolymer with additional electro-acoustic insulation function, with central handles making it easier to pull it out.

**NOTES:** applying the protective shield beneath the lid, the dispersible power of the box is reduced by 2W for GW48207 and by 3W for the GW48211 box.  
dispersible power calculated according to IEC 60670-24.

## DEEP LID



GW 48 227

**JUNCTION AND CONNECTION BOXES FOR SIDE-BY-SIDE ASSEMBLY, FOR UPRIGHTS - DEEP PLUMBABLE LID  
GREY RAL 7035**

Code	Outer dim. LxHxD (mm)	Compartment pre-arrangement	Dispersible max power (W)	Pack Carton
GW 48 227	260x260x121	2	13	4
GW 48 231	520x260x121	5	30	4

**CHARACTERISTICS:** the lid has a removable front plate and a frame for the connection with the trunking (max height = 66mm) and conduits (max Ø = 40mm).  
The frame is fitted for fixing the DIN rails (not supplied).

Pre-arrangement EN 50022: GW48227 horizontal - 24 modules (2x12), vertical - 24 modules (2x12); GW48231: horizontal - 78 modules (26x3), vertical - 36 modules (12x3).

**ACCESSORIES SUPPLIED:** internal dividers, joint elements for combined assembly, self-adhesive symbol labels for circuit identification, and sealing screws.

Mortar-proof paint protection shield in technopolymer with additional electro-acoustic insulation function, with central handles making it easier to pull it out.

**NOTES:** applying the protective shield beneath the lid, the dispersible power of the box is reduced by 2W for GW48227 and by 3W for the GW48231 box.  
dispersible power calculated according to IEC 60670-24.

**COMPLEMENTARY ITEMS FOR 48 CM AND 48 CM GREEN WALL**

**COMPLEMENTARY ITEMS**



GW 48 251

**SHOCKPROOF SEALABLE PLAIN LIDS FOR BOXES FOR UPRIGHTS - WHITE RAL 9016 - IP44**



Code	Front dim. LxH (mm)	Shock resistance	Pack Carton
GW 48 247	260x260	IK10	1/15
GW 48 251	520x260	IK10	1/10

**ACCESSORIES SUPPLIED:** self-adhesive symbol labels for circuit identification, and plumbable screws.



GW 48 271

**SHOCKPROOF SEALABLE DEEP LIDS FOR BOXES FOR UPRIGHTS - GREY RAL 7035 - IP44**



Code	For boxes dimensions	Shock resistance	Pack Carton
GW 48 267	260x260	IK10	1/10
GW 48 271	520x260	IK10	1/5

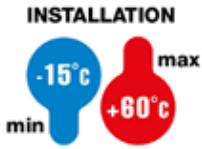
**CHARACTERISTICS:** the lid has a removable front plate and a frame for connection with trunking (max h = 65mm) and conduits (max Ø = 40mm).

The frame is fitted for fixing the DIN rails (not supplied).

Pre-arrangement EN 50022: CW48267 horizontal 24 modules (2x12), vertical 24 modules (2x12); GW48271 horizontal 78 modules (26x3), vertical 36 modules (12x3)

**ACCESSORIES SUPPLIED:** self-adhesive symbol labels for circuit identification, and plumbable screws.

## 48 PTC - MODULAR JUNCTIONS, CONTROL AND DISTRIBUTION BOXES

IK  
07GWT  
650°C

## BOXES WITH LID - IP40



GW 48 661

MODULAR, PROTECTED, FLUSH-MOUNTING JUNCTION AND CONNECTION BOXES  
SHOCKPROOF LID - WHITE RAL 9016

Code	Outer dim. LxHxD (mm)	Compartment pre-arrangement	Pack Carton
GW 48 661	138x169x70	1	1/28
GW 48 662	308x169x70	2	1/14
GW 48 663	398x169x70	3	1/9

**ACCESSORIES SUPPLIED:** self-adhesive symbol discs for the identification of circuits, kit of Ø 4x32mm stainless steel self-tapping screws, hinge for constrained lid opening.  
GW48662 Ready to house the DIN rail; space available: 14 modules.

Mortar guard element in cardboard supplied as standard in the packs and packed with paper banding.

**CHARACTERISTICS:** pre-arrangement for combined coupling (both horizontal and vertical) via the feedthrough coupling device GW48026.

Mortar guard element assembled by pressing on the base opening.

**NOTES:** for the inputs, remove the knockouts after cutting the relative tangs with scissors.

## BOXES WITH LID - IP55



GW 48 671

MODULAR, WATERTIGHT, FLUSH-MOUNTING JUNCTION AND CONNECTION BOXES  
SHOCKPROOF LID - GREY RAL 7035

Code	Outer dim. LxHxD (mm)	Compartment pre-arrangement	Pack Carton
GW 48 671	138x169x70	1	1/28
GW 48 672	308x169x70	2	1/14
GW 48 673	398x169x70	3	1/9

**ACCESSORIES SUPPLIED:** self-adhesive symbol discs for the identification of circuits, kit of Ø 4x32mm stainless steel self-tapping screws, hinge for constrained lid opening.  
GW48672 pre-arranged to house a DIN rail. Space available: 14 modules.

Mortar guard element in cardboard supplied as standard in the packs and packed with paper banding.

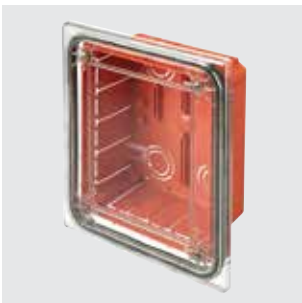
**CHARACTERISTICS:** pre-arrangement for combined coupling (both horizontal and vertical) via the feedthrough coupling device GW48026.

Mortar guard element assembled by pressing on the base opening.

**NOTES:** for the inputs, remove the knockouts after cutting the relative tangs with scissors.

The IP55 degree of protection is guaranteed with the lid closed and with installations on waterproof walls made of tiles or similar materials, without joints.

## BOXES WITH TRANSPARENT SHOCKPROOF LID - IP55



GW 48 691

MODULAR, WATERTIGHT, FLUSH-MOUNTING JUNCTION AND CONNECTION BOX  
TRANSPARENT SHOCKPROOF LID

Code	Outer dim. LxHxD (mm)	Compartment pre-arrangement	Pack Carton
GW 48 691	138x169x70	1	1/28

**ACCESSORIES SUPPLIED:** self-adhesive symbol discs for the identification of circuits, kit of Ø 4x32mm stainless steel self-tapping screws, hinge for constrained lid opening.  
Mortar guard element in cardboard supplied as standard in the packs and packed with paper banding.

**CHARACTERISTICS:** pre-arrangement for combined coupling (both horizontal and vertical) via the feedthrough coupling device GW48026.

Mortar guard element assembled by pressing on the base opening.

**NOTES:** for the inputs, remove the knockouts after cutting the relative tangs with scissors.

The IP55 degree of protection is guaranteed with the lid closed and with installations on waterproof walls made of tiles or similar materials, without joints.

**APPLICATIONS:** ideal for medical room applications where the earthing point must be inspectable.

MODULAR ENCLOSURES WITH SMOKED TRANSPARENT DOOR - IP55



GW 48 681

**WATERTIGHT FLUSH-MOUNTING MODULAR ENCLOSURES WITH SHOCKPROOF FRONTS - GREY RAL 7035**



Code	No. of modules EN 50022	Outer dim. LxHxD (mm)	Front dim. LxH (mm)	Dispersible power (W)	Pack Carton
GW 48 681	6	138x169x70	175x210	15	1/6
GW 48 682	12	308x169x70	345x210	25	1/4

**ACCESSORIES SUPPLIED:** module masks, user labels, kit of self-tapping stainless steel screws Ø 4x32mm.

Mortar guard element in cardboard supplied as standard in the packs and packed with paper banding. Enclosures with back plastic bottom.

**CHARACTERISTICS:** pre-arrangement for combined coupling (both horizontal and vertical) via the feedthrough coupling device GW48026.

Mortar guard element assembled by pressing on the base opening.

**NOTES:** dispersible power calculated according to IEC 60670-24.



GW 48 686

**WATERTIGHT FLUSH-MOUNTING COMBINED BOARD FITTED FOR MODULAR DEVICES AND FOR 2 FLANGES 85X75 MM FOR MOUNTING IEC 309 STANDARD SOCKET-OUTLETS - SHOCKPROOF FRONT - GREY RAL 7035**



Code	No. of modules EN 50022	Outer dim. LxHxD (mm)	Front dim. LxH (mm)	Dispersible power (W)	Pack Carton
GW 48 686	4	308x169x70	345x210	19	1/4

**ACCESSORIES SUPPLIED:** user labels, kit of self-tapping screws of Ø 4 x 32mm in stainless steel.

Mortar guard element in cardboard supplied as standard in the packs and packed with paper banding.

Enclosures with back plastic bottom.

**CHARACTERISTICS:** pre-arrangement for combined coupling (both horizontal and vertical) via the feedthrough coupling device GW48026.

Mortar guard element assembled by pressing on the base opening.

**NOTES:** dispersible power calculated according to IEC 60670-24. Compatible with IEC 309 16A 10° angled receptacle.

## COMPLEMENTARY ITEMS



GW 48 024

## INTERNAL DIVIDER FOR PTC BOXES



Code	For boxes dimensions	Pack Carton
GW 48 024	398x169x70 and 308x169x70 mm	10/200

**APPLICATIONS:** guarantees that circuits of a different nature are separated according to Standard CEI 64-8.



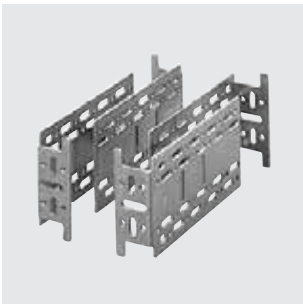
GW 48 026

## PTC BOX COUPLING ADAPTOR



Code	Description	Pack Carton
GW 48 026	Base box coupling	5/25

**APPLICATIONS:** allows the creation of vertical/horizontal combined compositions and easier cable passage.



GW 70 009

## GALVANIZED STEEL EXTENDING BRACKETS FOR REAR FIXING, COMPLETE WITH SELF-TAPPING SCREWS - SET OF 4 BRACKETS - 70 RT RANGE

Code	Adjustment range	Pack Carton
GW 70 009	90 - 160 mm	1/10

**APPLICATIONS:** when creating upright columns, it allows the creation of an air gap for the passage of conduits between the PTC box and the wall.



GW 44 683

## RAIL FOR FIXING EQUIPOTENTIAL TERMINAL BLOCKS IN THE PTC MODULAR FLUSH- MOUNTING BOXES



Code	Installable terminal blocks	Pack Carton
GW 44 683	4xGW44671; 3xGW44672; 2xGW44673; 2xGW44674; 1xGW44675	1/50

**CHARACTERISTICS:** width: 1 compartment. For applications with PTC boxes with 2 and 3 compartments, the rail is fixed on the dividers GW48024.



GW 48 643

**KIT FOR SEALING LIDS / FRONTS OF PTC BOXES  
2 SCREWS WITH HEAD WITH THROUGH HOLE**

Code	Description	Screw dimension (mm)	Pack Carton
GW 48 643	Screws nichel-plated brass	Ø 4x32	1/100

**APPLICATIONS:** in areas that can be accessed by unauthorised personnel, it prevents anyone tampering with the system.



GW 48 645

**KIT CONTAINING 4 LONG SELF-THREADING SCREWS WITH SPACERS FOR FIXING LIDS AND FRONTS**

Code	Screw dimension (mm)	Spacer thickness (mm)	Pack Carton
GW 48 645	Ø 4x45	Max 10 mm reducible	1/100

**CHARACTERISTICS:** the kit can be used for the following flush-mounting ranges: CD/CDK (from 6 modules upwards), 48 CM and 42 RV.



GW 48 644

**WATERTIGHT CYLINDRICAL SECURITY LOCK**

Code	For enclosures	Material	Pack Carton
GW 48 644	48 PTC and 42 RV range	Pressure die-cast metal	1/10

**ACCESSORIES SUPPLIED:** 2 keys.

**NOTES:** All the keys and relative locks with the same product code are identical.



GW 66 745

**WATERTIGHT LIDS FOR COMBINED ENCLOSURE 48 PTC RANGE, OF THE GW48686 TYPE**

Code	Dimensions LxH (mm)	Suitable for	Colour	Pack Carton
GW 66 708	85x75	1 Button Ø22 mm Range 74 PS	Grey	1/20
GW 66 745	85x75	1 Button Ø22 mm Range 74 PS	Yellow	1/20
GW 27 401	75x85		Grey RAL 7035	3/60

**APPLICATIONS:** GW66745 specific for emergency push-buttons. Possibility of assembly on Q-DIN boards, PTC junction boxes, flanged lids and panels.

**ACCESSORIES SUPPLIED:** gasket and mounting screws.



## SPARE PARTS



GW 48 611

## PROTECTED SHOCKPROOF LIDS FOR PTC JUNCTION BOXES - WHITE RAL 9016 - IP40



Code	For boxes dimensions	Pack Carton
GW 48 611	138x169x70	1/70
GW 48 612	308x169x70	1/25
GW 48 613	398x169x70	1/40

ACCESSORIES SUPPLIED: galvanised self-tapping screw kit 4x32 mm.



GW 48 621

## WATERTIGHT SHOCKPROOF LIDS FOR PTC JUNCTION BOXES - RAL 7035 - IP55



Code	For boxes dimensions	Pack Carton
GW 48 621	138x169x70	1/30
GW 48 622	308x169x70	1/20
GW 48 623	398x169x70	1/15

ACCESSORIES SUPPLIED: stainless steel self-tapping screw kit 4x32 mm.



GW 48 651

## PROTECTED WATERTIGHT TRANSPARENT SHOCKPROOF LIDS FOR PTC JUNCTION BOXES - IP55



Code	For boxes dimensions	Pack Carton
GW 48 651	138x169x70	1/30

ACCESSORIES SUPPLIED: stainless steel self-tapping screw kit 4x32 mm.



GW 40 423

## PLASTIC MODULE COVER PROFILE



Code	No. of modules EN 50022	Colour	Pack Carton
GW 40 423	4.5	Grey RAL 7035	50



48 PT / PT DIN BOXES



11 sizes complete with mortar guard elements, for creating junction points on the basis of specific needs. In sizes 6÷11, the boxes have a built-in DIN rail on the back-mounting box; this makes the range unique. Dispersible max power can be used to match the value with domotic and video entryphone devices. a characteristic that makes the range unique in the market.

48 CM BOXES



Thanks to the considerable box depth (121 mm), all the models in this range can accommodate a greater number of conduits (even with a wide diameter) along the vertical and horizontal walls. These characteristics make the 48CM boxes ideal for junction along system uprights.

48 PTC BOXES



A system consisting of boxes, enclosures and modular boards for junction, command and distribution. The IP55 version is ideal for applications in technical rooms, kitchens or places where there is a risk of the system being struck by sudden jets of water.

**48 PT / PT DIN - CONNECTION AND JUNCTION BOXES ALSO FOR DOMOTICS - IP40**

**TECHNICAL CHARACTERISTICS**

Standard: IEC EN 606070-1 (CEI 23-48); IEC EN 60670-22 (CEI 23-94); IEC EN 60670-24 (CEI 23-49) (\*)  
 Degree of protection: IP40  
 Installation temperature: max +60°C; min. -15°C  
 Material: GW PLAST technopolymer, halogen-free in accordance with EN 60754-2 (CEI EN 50267-2-2)

Impact resistance: IK 07 (standard and deep covers)  
 IK 10 (impact resistant cover)  
 Heat resistance: thermo-pressure with ball 70°C  
 Resistance to abnormal heat and fire: Glow wire test 650°C  
 Applications: for brickwork walls

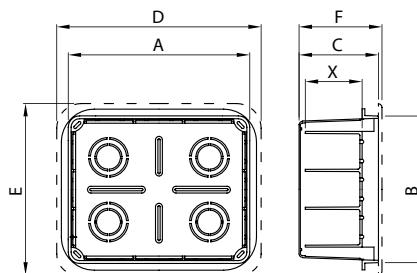
(\*) Enclosure type: GP (CEI 23-51) and PD

**BEHAVIOUR WITH CHEMICAL AND ATMOSPHERIC AGENTS**

Agent	Saline solution	Acids		Bases		Solvents				Mineral oil	UV rays
		Concentrated	Diluted	Concentrated	Diluted	Hexane	Benzol	Acetone	Ethyl alcohol		
48 PT / PT DIN standard cover	Resistant	Not resistant	Not resistant	Limited resistance	Limited resistance	Not resistant	Not resistant	Not resistant	Limited resistance	Limited resistance	Limited resistance
Shockproof cover for 48 PT / PT DIN	Resistant	Not resistant	Limited resistance	Not resistant	Limited resistance	Resistant	Not resistant	Not resistant	Limited resistance	Limited resistance	Limited resistance

**Dimension tables**

**JUNCTION BOXES (GW48001-GW48005)**



Code	Modular boxes										Cover			Deep lid				max Ø of conduit per sector	max Ø of conduit in the back-mounting plate	Maximum dispersible power
	A	B	C	X	N° - S	No. modules N° - M	I	L	'I	'L	D	E	F	'D	'E	G	H			
GW 48 001	92	92	45	30	-	-	-	-	-	-	112	112	48.5	-	-	-	-	Ø32	Ø25	-
GW 48 002	118	96	50	36	-	-	-	-	-	-	138	116	53.5	-	-	-	-	Ø32	Ø25	-
GW 48 003	118	96	70	50	-	-	-	-	-	-	138	116	73.5	-	-	-	-	Ø32	Ø25	-
GW 48 004 GW 48 084	152	98	70	50	-	-	-	-	-	-	172	118	73.5	170	116	49	56	Ø40	Ø32	-
GW 48 005 GW 48 085	160	130	70	50	-	-	-	-	-	-	186	156	74	178	148	49	56	Ø40	Ø32	-