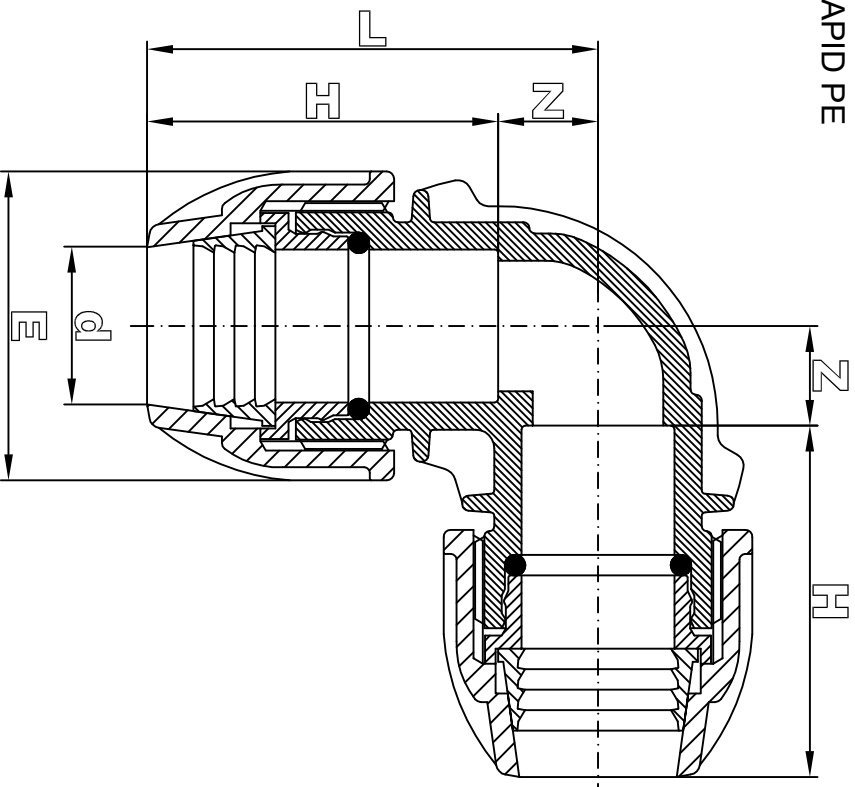


COT RAPID PE



The FILBO connecting joint is designed and manufactured in according to the international standard norms:

- ISO 3458
- ISO 3459
- ISO 3501
- ISO 3503
- ISO 14236
- DIN 8076-3
- KIWA BRLK 534-01
- UNI 9561
- UNI 9562


The connecting parts of the body with the PE pipes are designed in according to the international standard norms:

- ISO DIS 3607
- DIN 8072
- DIN 8074
- UNI 7611
- UNI 7990

Male and female threaded adaptors are designed in according to the international standard norms:

- ISO 7
- UNISO 7-1
- BS 21

| d   | Z <sub>min.</sub> | H   | L         |           | E         |           | g   |
|-----|-------------------|-----|-----------|-----------|-----------|-----------|-----|
|     |                   |     | Tolerance | Tolerance | Tolerance | Tolerance |     |
| 20  | 14                | 58  | +3 mm     | +3 mm     | 47        | +0.3 mm   | 70  |
| 25  | 16                | 67  | +3 mm     | +3 mm     | 54        | +0.3 mm   | 110 |
| 32  | 20                | 77  | +3 mm     | +3 mm     | 66        | +0.3 mm   | 180 |
| 40  | 27                | 96  | +5 mm     | +5 mm     | 83        | +0.5 mm   | 380 |
| 50  | 33                | 110 | +5 mm     | +5 mm     | 98        | +0.5 mm   | 580 |
| 63  | 38                | 124 | +5 mm     | +5 mm     | 116       | +0.5 mm   | 940 |
| 75  |                   |     |           |           |           |           |     |
| 90  |                   |     |           |           |           |           |     |
| 110 |                   |     |           |           |           |           |     |

|  |            |   |  |                                   |  |
|--|------------|---|--|-----------------------------------|--|
| Designer                                       |            |  |  | DENOMINAZIONE                     |  |
| 6, Tsar Ivan Shishman Str.<br>Varna – Bulgaria |            |   |  | Elbow Data Sheet.<br>COT RAPID PE |  |
| SCALA  | Date       | Injection Machine   |  | Raw Material                      |  |
| //   | 05.06.2007 |   |  | Drawing N°                        |  |
|  |            |   |  | DSH 0006                          |  |