

PRODUCT DATASHEET

LED DOWNLIGHT FS-18W/220S/865L

Consumer Products Downlights | LED PANEL LIGHT SURFACE-MOUNTED



AREAS OF APPLICATION

- Offices, conference rooms, reception areas
- Corridors, stairways, entrance areas
- Direct replacement for luminaires with compact fluorescent lamps
- General illumination

PRODUCT BENEFITS

- Low energy consumption and energy saving
- Easy and quick installation
- Instant 100 % light, no warm-up time
- No dark and yellow spots on the diffuser
- Aluminum frame with better heating diffusion

PRODUCT FEATURES

- Surface mounted luminaires with direct light emission
- Light guide made of PMMA for long lifetime
- Mercury-free lamps
- Lifetime: up to 25,000 h (at 25 °C)



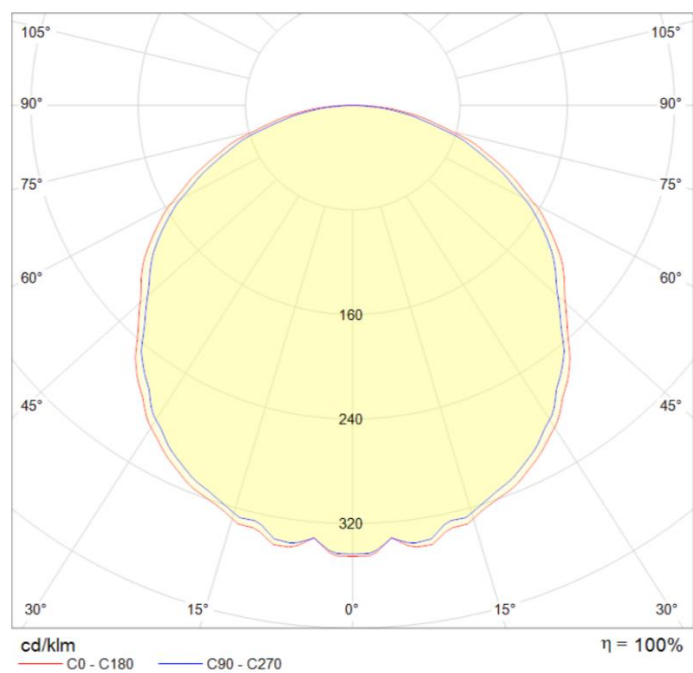
TECHNICAL DATA

Electrical data

| | |
|---|------------|
| Rated wattage | 18.00 W |
| Nominal wattage | 18.00 W |
| Nominal voltage | 185-240VAC |
| Operating frequency | 50...60 Hz |
| Power factor λ | > 0.50 |
| Insulation Class | Class II |
| Protection class IK (shock resistance) | IK03 |

Photometrical data

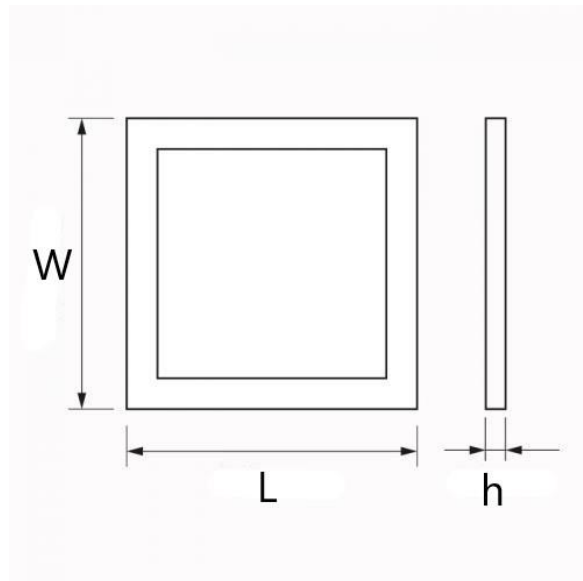
| | |
|---|---------------------------|
| Rated luminous flux | 1260 lm |
| Light color (designation) | Cool White |
| Color temperature | 6500 K |
| Luminous flux | 1260 lm |
| Color rendering index Ra | ≥ 80 |
| Standard deviation of color matching | ≤ 6 sdc _m |
| Nominal luminous flux | 1260 lm |
| Rated color temperature | 6500 K |



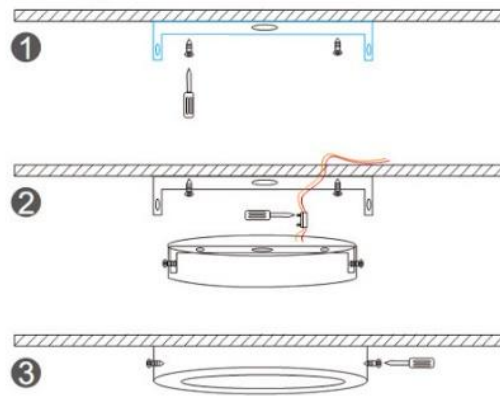
Light technical data

| | |
|----------------------|---------|
| Starting time | < 0.5 s |
| Beam angle | 120 ° |

Dimensions & weight



Installation diagram



Installation steps:

- Step 1: Fixing the pad to ceiling with screws in packaging.
- Step 2: Connect the drivers with input.
- Step 3: Join the lamp to pad fixed with screws.

| | |
|---------------|----------|
| Length | 220.0 mm |
| Width | 220.0 mm |
| Height | 38.0 mm |
| Weight | 580.0 g |

Lifespan

| | |
|-----------------------------------|---------|
| Nominal lamp life time | 25000 h |
| Rated lamp life time | 25000 h |
| Number of switching cycles | 20000 |
| Warranty | 2 years |

Capabilities

| | |
|-------------------------------|-----------------|
| Dimmable | No |
| LED module replaceable | Not replaceable |

Temperatures & operating conditions

| | |
|----------------------------------|--------------|
| Ambient temperature range | -25...+40 °C |
| Storage temperature | -25...+55 °C |

Additional product data

| | |
|--|--|
| Installation method | Surface |
| Low flicker | Yes |
| Mercury-free | Yes |
| Design / version | frosted |
| Body material | Aluminum |
| Cover material | Polymethylmethacrylate (PMMA) |
| Light emitting surface material | Polymethylmethacrylate (PMMA) |
| Product remark | All technical parameters apply to the entire lamp/Due to the complex production process for light-emitting diodes, the typical values shown for the technical LED parameters are purely statistical values that do not necessarily match the actual technical parameters of each individual product, which can vary from the typical value |
| Mercury content | 0.0 mg |
| Standards | CE/CCC |

Order code/Name

| | |
|------------------------|---------------------------------------|
| Order code/Name | FS4255 LED DOWNLIGHT FS-18W/220S/865L |
|------------------------|---------------------------------------|

LOGISTICAL DATA

| Product code | Packaging unit (Pieces/Unit) | Dimensions (length x width x height) | Gross weight | Volume |
|---------------------|-------------------------------------|---|---------------------|----------------------|
| FS4255 | Carton box 1 | 230 mm x 45 mm x 230 mm | 605.00 g | 2.38 dm ³ |
| FS4255 | Shipping carton box 20 | 450 mm x 350 mm x 235 mm | 12100.00 g | 0.037 m ³ |

The mentioned product code describes the smallest quantity unit which can be ordered. One shipping unit can contain one or more single products. When placing an order, for the quantity please enter single or multiples of a shipping

REFERENCES / LINKS

For further products and actual information concerning LED luminaires see www.fucida.eu

For Guarantee see www.fucida.eu

DISCLAIMER

Subject to change without notice. Errors and omission excepted.

