

CLIMAX CONNECTORS PCX-002, PCX-004, PCX-005, PCX006

The Climax connectors have been designed in accordance with EN 12275:2013 and safety requirements of Royal Decree 1407/1992 of Spain.

Notified Body involved in the EC Type examination certificate:

VVUÚ, a.s. - Pikartská 1337/7 - 716 07 Ostrava-Radvanice - Czech Republic (ID no. 1019)

Notified Body performed Production Quality Control:

INSPEC International Ltd. 56 leslie hough way, salford, greater manchester, m6 6aj, United Kingdom, (id no.0194).

IMPORTANT

These instructions inform you about the correct use of connector: read and keep these instructions. Only the techniques shown are advised, all other uses are excluded: danger of death. In case of doubt or problem of understanding the use of this product, please contact Productos Climax, S.A. Activities at height are dangerous activities which may lead to severe injury or even death. Gaining an adequate apprenticeship in appropriate techniques and methods of safety is your own responsibility.

You personally assume all risks and responsibilities for all damage, injury or death which may occur during or following wrong use of our products in any manner whatsoever. If you are not able, or not in a position to assume this responsibility or to take this risk, do not use this equipment.

This product should be used only by competent users, trained and responsible. The user must be medically capable to control his own security and any possible emergency situations.

Before using this equipment, take all necessary steps to familiarise yourself with rescue techniques should an emergency occur.

Your life depends on your equipment and on its history (use, storage, inspection, etc). Record and keep with these instructions: batch number, place and date of purchase, date when first used and checks, user's name and comments.

All users should be trained and competent, or under the direct supervision of a trained and competent person.

It is Essentials for the safety of the user that if the product is re-sold outsider the original country of destination the reseller shall provide instructions for use, for maintenance, for periodic examination and for repair in the language of the country in which the product is to be used.

The product should only be used as instructed and no alterations to it should be made.

For screw locking connector, it is recommended that the user does not have to attach and remove the connector frequently. At most 3-5 times per working day is our recommendation.

USE

This equipment is intended for use as a connector in personal fall arrest systems. The use of this equipment, combined with other components of personal protective equipment, must conform to these instructions of use and to the standard which apply.

Verify that this product is compatible with the other elements of the system in your application (compatible = good functional interaction)

The length of the connector should be taken into account when used in any fall arrest system, as it will influence the length of a fall.

Prior to each use, it has to be ensured that the clearance beneath the user is sufficient, so that in case of a fall, there will be no impact with the ground, objects, or equipment below.

Material: Aluminum alloy

Locking mechanism: Automatic

Gate opening: 19 mm

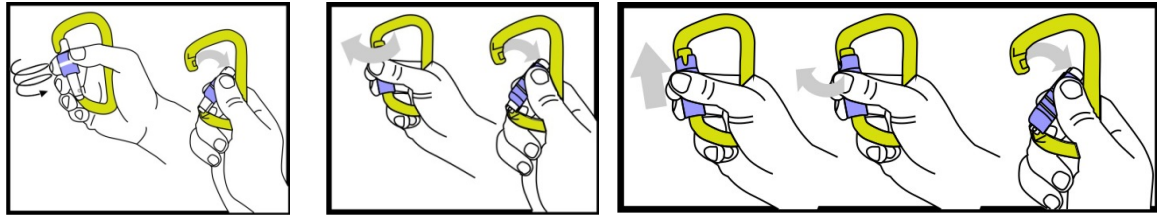
Weight: 82 g

OPERATION

The connector is a protection device to be incorporated into a personal fall-arrest system. The product should only be used as instructed and no alteration to it should be made.

The connector must be used with the gate closed and the sleeve locked.

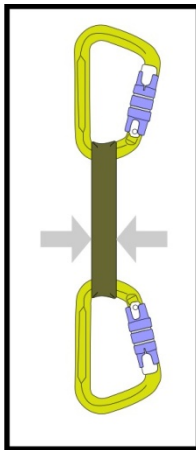
Only a closed gate can guarantee the maximum safety of the carabiner. Check for proper gate action every time before using it. (see picture 1-3).



1.

2.

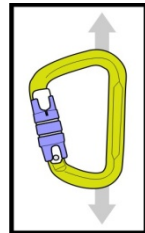
3.



4.

Never use over-wide rope to connect with 2 carabiners. If the diameter of the rope is over 12mm, the breaking load will not achieve the minimum strength. And this may cause the danger happen. (see picture 4)

It is also important to connect on the correct and safe anchor point with other subsystem or a fall arrest system. (see picture 5)



5.

The connector cannot be opened when under load.

INSPECTION

Before each use it is important to control and ensure that the item is in optimum conditions, that it works correctly and that it corresponds to the use you wish to give it. To keep track of your equipment, it is preferable to assign each piece of equipment to a unique user so that he will know its history. Check for correct gate action and correct locking on gate locking mechanisms. Check for signs of corrosion or wear. The connector should not be used after a major fall; internal, non-visible damage may lead to a reduction in strength. If in any doubt, do not hesitate to contact Productos climax S.A

It is also necessary to have the equipment checked by the manufacturer or a centre authorised by the manufacturer at least every 12 months. The results of the checks should be recorded in the follow-up sheet to keep the equipment controlled. It is preferable for the equipment to be assigned to a single user who will thus know its history.

EXPIRATION DATE

It is difficult to establish the working life of this product, as it depends on its use and on how it has been kept, although in general it can be calculated at around 10 years. Its working life may vary between one single use under extreme conditions, e.g. prolonged exposure to salt splashing, having withstood a strong fall, mechanical deformation, accidental fall of the hook, wear, malfunctioning of the cam, chemical contamination, exposure to heat above normal weather conditions. As the item is used, its safety and, therefore, its working life will gradually reduce as a result of one or more of the aforementioned factors

MAINTENANCE

If the item is dirty, clean it with warm water (max. 40° C), adding a mild detergent (neutral soap) when necessary. Leave to dry naturally, away from sources of heat. To lubricate the connector locking mechanism, use silicon-based oil only. Prevent the oil from coming into contact with the textile parts. This operation must be carried out after having cleaned and dried the item.

This connector does not support reparations

LUBRICATION

Lubricate the gate mechanism with a silicone based lubricant. This should be carried out after cleaning.

Cleaning and lubrication is recommended after every use in marine environment.

STORAGE

Store unpacked in a cool, dry, dark place away from excessive heat or heat sources, high humidity, sharp edges, corrosives, or other possible causes of damage. Do not store wet.

TRANSPORT

No special requirements are necessary, but using a bag protects against abrasion and soiling. Avoid contact with chemical reagents or other corrosive substances.

COMPATIBILITY

The connector should be compatible with the computer that is attached (shapes and sizes ...)"


MEANING OF THE PRODUCT MARKINGS


Climax: Name of the manufacturer.


CE: "CE" Conformity marking.

0194: No. of the notified organism involved in the control of the CE quality guarantee system:

EN 12275:2013: Number of European standard governing this type of item.

 Minimum strength values in kN for major axis gate-closed loading

 Minimum strength values in kN for minor axis loading

 Minimum strength values in kN for major axis gate-open loading

 See instructions for use.

--/-- **XXX** : batch number and serial number

WARNING

Do not continue to use this product after a major shock: even though no visible signs are possible, internal damage may have occurred, thus reducing its strength and its margin of safety. Do not hesitate to contact PRODUCTOS CLIMAX, S.A. in case of doubt.

This equipment must not be used by people suffering from vertigo or who are taking any sort of medication that warns in its directions for use about carrying out hazardous work.

It is absolutely forbidden to carry out any sort of modification or alteration of the equipment without the manufacturer's prior consent in writing.

This equipment must not be used for any other applications or purposes apart from what it was designed for.

For safety reasons, it is essential that the equipment be immediately decommissioned if there are any doubts about its conditions for safe usage.

In this case must not be used again until a competent technician has examined it and confirms in writing that it is still safe to use.

For user safety, it is essential that if the product is re-sold outside the original country of destination, it must be accompanied with instructions for use, maintenance, regular checks and repairs in the language of the country where the equipment is to be used.

CLIMAX CONNECTOR		CE 0194		
User				
Purchase date				
Date of first use				
Date of first use				
Batch number				
Comments				
History of regular checks and repairs				
Date	Periodic examination of repair	Defects observed, repairs carried out and other relevant information	Name and signature of persons in charge	Periodic examination next due date
MANUFACTURER PRODUCTOS CLIMAX POL. Ind. Sector Mollet c/A nº 1 08150 Parets del vallès SPAIN				