



Simply great LEDSwitch now to great quality LED at a great price

Ledinaire floodlight mini

The Ledinaire range contains a selection of popular off-the-shelf LED luminaires that comes with the Philips high quality levels at a competitive price. Reliable, energy-efficient and affordable – just what you need.

Benefits

- Philips quality and reliability
- Fast payback: energy savings >80% (halogen lamps)
- Quick installation without opening the floodlight
- Philips high-quality finish, robust and fully reliable

Features

- System flux: 900 lm (10W); 2500 lm (27W); 4500 lm (45W) versions with Neutral White, CRI 80 and a high efficiency of 90 lm/W
- Extra flat IP65 design of floodlights, supplied with cable, can be mounted Standing-up or hanging-down
- Motion detector versions
- Long lifetime of 50,000 hours (Ta 25°C)
- Prismatic glass for comfortable light
- CE, CB, ROHS compliant

Application

- Building facades, retailing stores
- Gardens, underpasses
- Billboards

Ledinaire floodlight mini

Specifications

Aiming possibilities from the horizontal	to °
Aiming possibilities from the vertical	to °
Ambient Temperature	-25 to +40 °C
Beam spread luminaire	100°
Main color of the Luminaire	Gray and black
Connection	Flying leads/wires (Flying leads/wires)
Dimming	No
Driver	Power supply unit (Power supply unit)
Initial correlated color temperature	4000 K
Initial input power	10, 27, 50 W

Initial LED luminaire efficacy	90 lm/W
Initial luminous flux	900, 2500, 4500 lm
Input frequency	50 to 60 Hz
Input voltage	220 to 240 V
Inrush current (A)	0.13, 0.38, 0.64 A
Light source replaceable	No
Material	Bracket:
Material	Housing: polycarbonate
Material	Reflector: -
Optic	Very wide beam angle 100°
Surge protection	2/2 kV
Warranty period	3 years

Versions



LED Module, system flux 900 lm - LED - 100°



LED Module, system flux 2500 lm - LED - 100°



LED Module, system flux 4500 lm - LED - 100°



LED Module, system flux 900 lm



LED Module, system flux 2500 lm



LED Module, system flux 4500 lm

Ledinaire floodlight mini

Product details



Ledinaire_mini-
BVP105_Led9-1DPP.TIF



Ledinaire_mini-
BVP105_Led9-2DPP.TIF



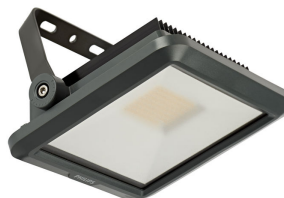
Ledinaire_mini-
BVP105_Led9-3DPP.TIF



Ledinaire_mini-
BVP105_Led9-4DPP.TIF



Ledinaire_mini-
BVP105_Led9-5DPP.TIF



Ledinaire_mini-
BVP105_Led25-1DPP.TIF



Ledinaire_mini-
BVP105_Led25-2DPP.TIF



Ledinaire_mini-
BVP105_Led25-3DPP.TIF

Ledinaire floodlight mini

Product details



Ledinaire_mini-
BVP105_Led25-4DPP.TIF



Ledinaire_mini-
BVP105_Led25-5DPP.TIF



Ledinaire_mini-
BVP105_Led45-1DPP.TIF



Ledinaire_mini-
BVP105_Led45-2DPP.TIF



Ledinaire_mini-
BVP105_Led45-3DPP.TIF



Ledinaire_mini-
BVP105_Led45-4DPP.TIF



Ledinaire_mini-
BVP105_Led45-5DPP.TIF



Ledinaire_floodlight_mini-
BVP105-1DPP.TIF

Ledinaire floodlight mini

Product details



Ledinaire_floodlight_mini-
BVP105-2DPP.TIF



Ledinaire_floodlight_mini-
BVP105_Led45-1DPP.TIF



Ledinaire_floodlight_mini-
BVP105_Led45-2DPP.TIF

Ledinaire floodlight mini

Application Conditions

Maximum dim level	Not applicable
-------------------	----------------

Approval and Application

Mech. impact protection code	IK07
------------------------------	------

Light Technical (Common/Differential)	2/2 kV
---------------------------------------	--------

Controls and Dimming

Dimmable	No
----------	----

General Information

Luminaire light beam spread	100°
CE mark	CE mark
Light source color	840 neutral white
Optical cover/lens type	Glass flat frosted
Driver included	Yes
Flammability mark	-
Light source replaceable	No
Number of gear units	1 unit
Number of light sources	-
Optic type	Very wide beam angle 100°

Initial Performance (IEC Compliant)

Init. Corr. Color Temperature	4000 K
Init. Color Rendering Index	>80

Light Technical

Standard tilt angle side entry	-
Standard tilt angle posttop	-

Mechanical and Housing

Color	Gray and black
-------	----------------

General Information

Order Code	Full Product Name	Lamp family code
912401483116	BVP105 LED9/840 PSU VWB100	LED9S
912401483117	BVP105 LED25/840 PSU VWB100	LED25S
912401483118	BVP105 LED45/840 PSU VWB100	LED45S
912401483141	BVP105 LED9/840 PSU VWB100 MDU	LED9S
912401483142	BVP105 LED25/840 PSU VWB100 MDU	LED25S
912401483143	BVP105 LED45/840 PSU VWB100 MDU	LED45S

Initial Performance (IEC Compliant)

Order Code	Full Product Name	Initial luminous flux	Order Code	Full Product Name	Initial luminous flux
912401483116	BVP105 LED9/840 PSU VWB100	900 lm	912401483118	BVP105 LED45/840 PSU VWB100	4500 lm
912401483117	BVP105 LED25/840 PSU VWB100	2500 lm	912401483141	BVP105 LED9/840 PSU VWB100 MDU	900 lm

