

Hi-MO 6

Explorer

LR5-54HTH 420~440M

- Potrivit pentru piata de distributie
- Designul simplu intruchipeaza stilul modern
- Performanta mai buna a generarii de energie
- Calitatea ridicata a modulelor pentru fiabilitate pe termen lung

15

Garantia de 15 ani pentru material
si procesare

25

Garantia de 25 ani pentru
puterea de iesire ultra
liniara

Certificarea Completa a Sistemului si a Produsului

IEC 61215, IEC 61730, UL 61730

ISO9001:2015: ISO Quality Management System

ISO14001: 2015: ISO Environment Management System

ISO45001: 2018: Occupational Health and Safety

IEC62941: Guideline for module design qualification and type approval

LONGI



22.5%
MAX MODULE
EFFICIENCY

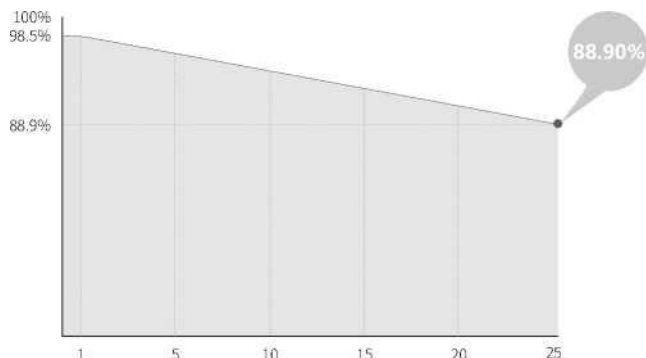
0~3%
POWER
TOLERANCE

<1.5%
FIRST YEAR
POWER DEGRADATION

0.40%
YEAR 2-25
POWER DEGRADATION

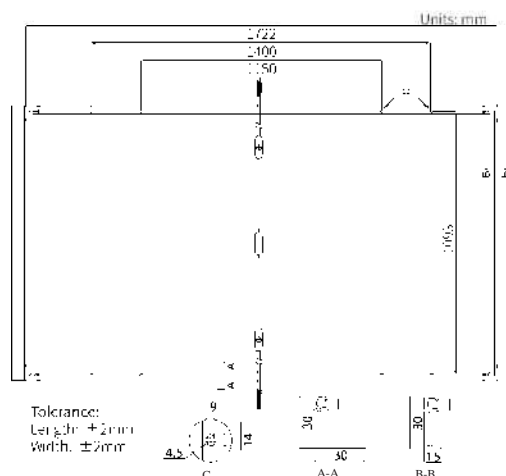
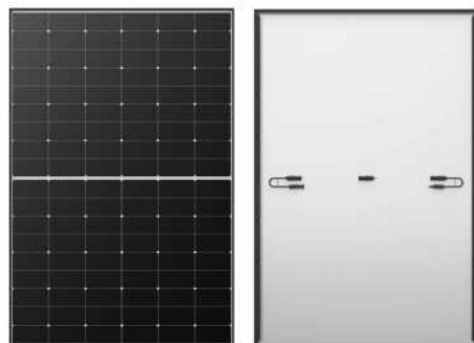
Valoarea Suplimentara

Garantie de alimentare de 25 de ani



Parametri mecanici

Orientarea celulelor	108 (6×18)
Cutia de jonctiune	IP68
Cablu de iesire	4mm ² , ±1200mm length can be customized
Sticla	Sticlă unică, sticlă securizată acoperită de 3,2 mm
Rama	Cadru din aliaj de aluminiu anodizat
Weight	20.8kg
Dimension	1722×1134×30mm
Packaging	36buc per palet / 216pcs per 20'GP / 936buc per 40'HC



Caracteristici Electrice

Tipul de modul	STC : AM1.5 1000W/m ²		25°C		NOCT :		AM1.5 800W/m ² 20°C 1m/s		Test uncertainty for Pmax: ±3%	
	LR5-54HTH-420M	LR5-54HTH-425M	LR5-54HTH-430M	LR5-54HTH-435M	LR5-54HTH-440M	STC	NOCT	STC	NOCT	STC
Conditia de testare	STC	NOCT	STC	NOCT	STC	NOCT	STC	NOCT	STC	NOCT
Puterea maxima (Pmax/W)	420	314	425	318	430	321	435	325	440	329
Tensiunea de Circuit deschid (Voc/V)	38.73	36.36	38.93	36.55	39.13	36.74	39.33	36.93	39.53	37.11
Curent de scurtcircuit (Isc/A)	14.00	11.31	14.07	11.36	14.15	11.43	14.22	11.49	14.30	11.55
Tensiunea la puterea Maxima (Vmp/V)	32.44	29.60	32.64	29.78	32.84	29.97	33.04	30.15	33.24	30.33
Curent la Puterea Maxima (Imp/A)	12.95	10.60	13.03	10.67	13.10	10.72	13.17	10.78	13.24	10.85
Module Efficiency(%)	21.5		21.8		22.0		22.3		22.5	

Parametri de Functionare

Temperatura Operationala	-40°C ~ +85°C
Toleranta de Iesire a Puterii	0 ~ 3%
Toleranta Voc and Isc	±3%
Tensiunea maxima a sistemului	DC1500V (IEC/UL)
Clasa Maxima a Seriei Sigurantei	25A
Temperatura Nominala de Functionare a Celulei	45±2°C
Clasa de Protectie	Class II
Indice de Foc	UL type 1 or 2 IEC Class C

Incarcare Mecanica

Partea Frontala Sarcina Statica Maxima	5400Pa
Partea Spate Sarcina Maxima	2400Pa
Testul la Grindina	25mm Grindina la Viteza 23m/s

Temperaturi Nominale (STC)

Coefficientul de temperatura al Isc	+0.050%/°C
Coefficientul de temperatura al Voc	-0.230%/°C
Coefficientul de temperatura al Pmax	-0.290%/°C

LONG!

No.8369 Shangyuan Road, Xi'an Economic And Technological Development Zone, Xi'an, Shaanxi, China.

Web: www.longi.com

Specificatiile incluse in aceasta fisă tehnica pot fi modificate fara notificare prealabila. LONG! Isi rezerva dreptul de interpretare finala..(20230811V19)DG